

PORTABLE EQUIPMENT

N130



VIBROMETER

MACHINE
ANALYSER

SPECTRUM
ANALYSER



NEW



CEMB

BALANCING MACHINES

N130 PORTABLE EQUIPMENT



STANDARD ACCESSORIES

- No.1 accelerometer transducer 100mV/g
- No.1 magnetic base Ø 25mm
- No.1 probe
- No.1 transducer connection cable L 2m
- No.1 USB stick with manuals
- Battery charger with multiplug adapters
- Carrying case
- Micro USB Cable

OPTIONAL ACCESSORIES

- No.1 Photocell complete with upright and magnetic base
- No.1 Connection cable 5m for transducer
- No.1 Connection cable 5m for photocell
- No.1 Extension cable 10m for transducer
- No.1 Extension cable 10m for photocell



The smart solution for vibration analysis

Intuitive functions under full control

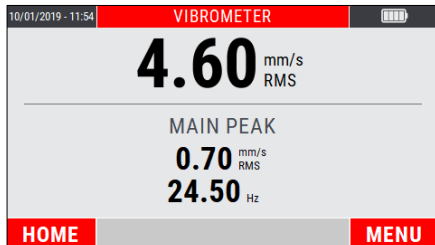


Up to 10 KHz Vibrometer and Machine Analyzer

- **4.3" color graphic display**
Very high luminosity and contrast for sunlight use
Wide view angle
- **Enhanced click keyboard**
Optimal tactile feedback
Designed for gloves use
- **Heavy duty metal connectors**
- **Fast measurement**
- **Huge memory space**
14.8 GB, expandable to 128 GB
1000+ measurements of each type
- **Easy reporting**
Screenshot capturing
Smart route data store
Output file type: JSON format
Micro USB 2.0 data port

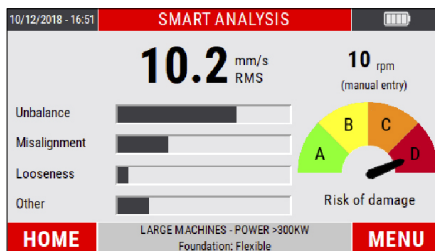


VIBROMETER & TACHO



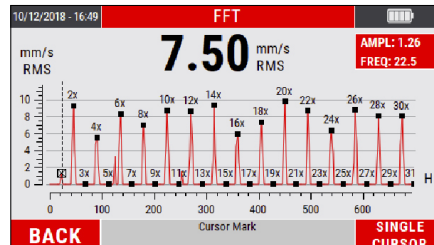
- Big readable characters
- Overall with main peak
- 1x fundamental with phase
- Rotation speed

SMART ANALYSIS



- Machine troubleshoot at a glance
- Vibration root cause identification step by step according ISO10816-3
- Automatic speed detection

HIGH RESOLUTION FFT



- Graphic zoom
- Peak cursors
- Autoscale feature
- List of main peaks

BEARING ANALYSIS

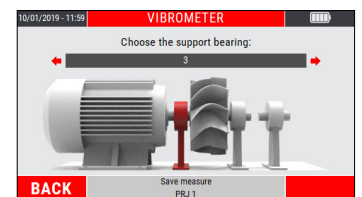


- Based on envelope algorithm
- Bearing condition evaluation
- Store CBA value for trend analysis and predictive maintenance

INTELLIGENT DATA SAVING



STEP 1: Enter the machine name



STEP 2: Select the location



STEP 3: Enter the X, Y or Z direction

CEMB

TECHNICAL DATA

GENERAL CHARACTERISTICS

- Display: 4,3" colour LED-backlit TFT LCD (480 x 272 pixel).
- New EasyClick tactile keyboard with embossed keys
- Internal memory: 14.8 GB (expandable to 128 GB)
- Multi language user interface

MEASUREMENT TYPES

- Effective value (RMS)
- Peak value (Pk)
- Peak-to-peak value (PP)

MEASURING PERFORMANCE

- Bandwidth: 1Hz - 10 KHz
- FFT Resolution: Max. 3200 lines
- Tachometer: Up to 250,000 rpm

UNITS OF MEASUREMENT

- Acceleration: [g]
- Velocity: [mm/s] or [inch/s]
- Displacement: [μ m] or [mils]
- Frequency: [Hz] or [Cpm]

INPUT

- 1 measuring channel IEPE sensor, accelerometer and velocimeter (with a specified cable pluggable on BNC to read any dynamic signal max. 5V-PP)
- 1 photocell channel (rotation speed and angle reference)
- 1 MicroUSB 2.0 port for data transfer
- 1 jack plug for battery charger

AMBIENT

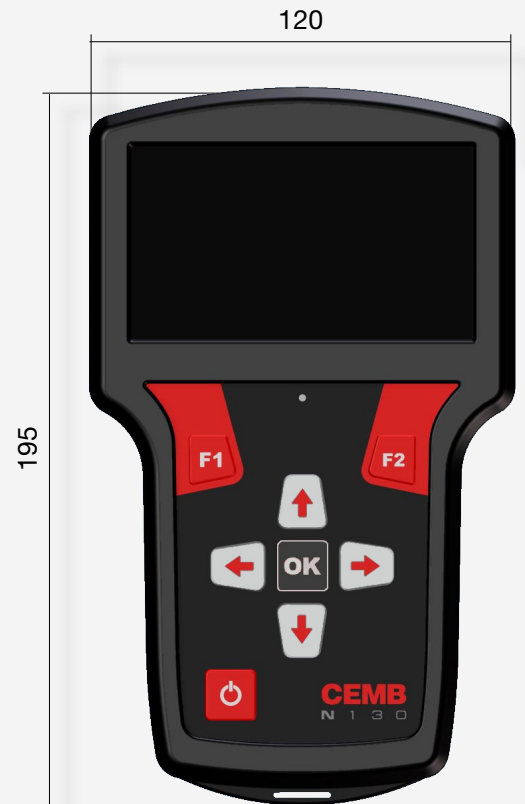
- Temperature: from -20° to +70° C
- Air humidity: from 0% to 95% without condensate
- Protection: IP54

POWER SUPPLY

- Long Life Battery: > 8 hours based on typical use
- Charging time: 2,5 hours for 80% of battery capacity
4 hours for 100% of battery capacity
- Battery type: Rechargeable 3100 mAh Lithium battery
- Power supply: battery charger for 100-240 V, 50/60 Hz (24 V, 1.5 A)

CARRYING CASE DIMENSIONS AND WEIGHT

- Approx. 370(L) x 300 (H) x 115(D), 1800 gr.



CEMB S.p.A. - Via Risorgimento, 9
23826 Mandello del Lario (LC) - Italy
www.cemb.com



Vibration analysis division:
Phone +39 0341 706111
e-mail: stm@cemb.com



Address: Unit 6, No. 52, Jouybar St.
Tehran - 1415795361, IRAN
Tel: +98-21-88996358-60 Fax: +98-21-88992367
www.cemb-iran.com
info@cemb-iran.com