

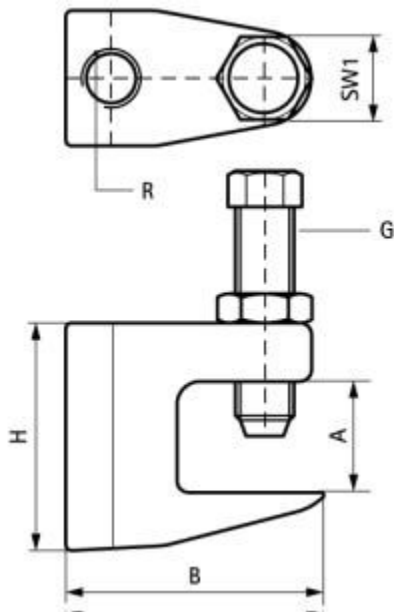
BIS Beam Clamps Model C

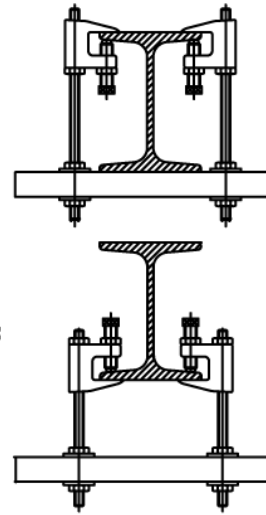
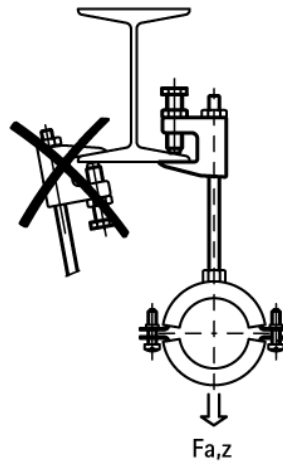
for flange

- Product Info
 - Downloads
 - Combinations
 - References
-

Features and benefits

- for a solid fixing to steel construction without the need for welding or drilling
- according to VdS-regulations an additional safety strap should be used when supporting pipes above DN65
- bolt with hexagon head according to DIN 933 strength class 8.8, screw point with cup ring according to EN ISO 4753 and lock nut
- material: beam clamp made of cast iron; bolt of hardened steel, nut of steel, zinc plated
- see also: BIS Safety Strap (page K 20 06)





Part No.	Code	A	R	G	B	H	SW1	Fa,z	Appr.	Pack 1
		(mm)			(mm)	(mm)	(mm)	(N)		
600 3 006	TK10-M6	≤23	M6	M10	50	45	17	2,500	-	50
600 3 008	TK10-M8	≤23	M8	M10	50	45	17	2,500	VdS	50
600 3 010	TKN10-M10	≤20	M10	M10	44	42	17	2,500	VdS, FM	50
600 3 310	TK16-M10	≤28	M10	M12	58	58	19	2,500	VdS, FM	25
600 3 012	TK12-M12	≤26	M12	M10	58	54	17	3,500	VdS, FM	25
600 3 016	TK16-M16	≤28	M16	M12	58	58	19	5,500	VdS, FM	25
600 3 908	TK10-D9	≤23	Ø 9 mm	M10	50	45	17	2,500	VdS	50
600 3 910	TKN10-D11	≤20	Ø 11 mm	M10	44	42	17	2,500	VdS, FM	50
600 3 912	TK12-D13	≤26	Ø 13 mm	M10	58	54	17	3,500	VdS, FM	25

Tighten the set screw with hand and apply a further 1/2 turn with a spanner. Tighten counter nut with hand and apply a further 1/8 turn with a spanner. Certificates available on request.