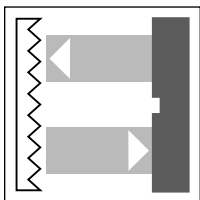


Series -F22



Retro-reflective photoelectric sensor

OCS6000-F22-A0-V15
OCS6000-F22-A2-V15



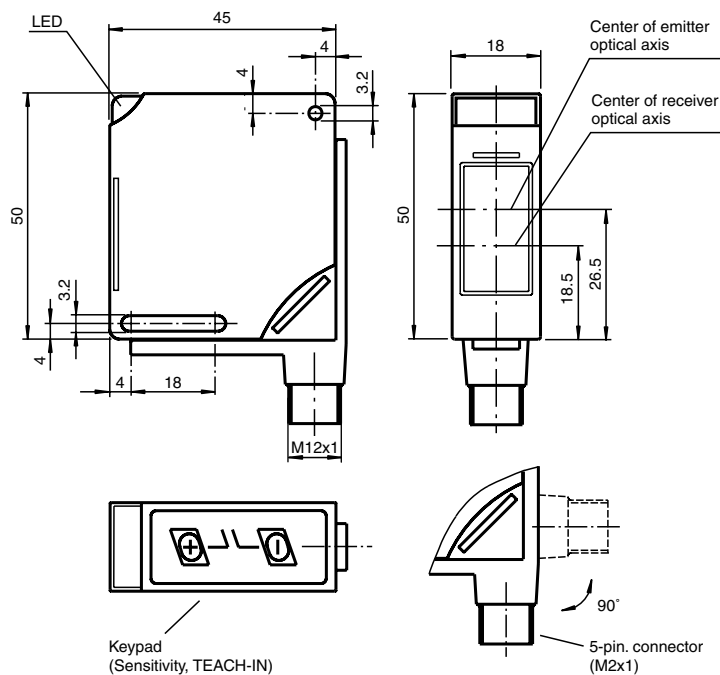
6000 mm



Features

- Glare protected with polarization filter
- Visible red light
- Automatic adjustment of the sensitivity via TEACH-IN, therefore able to detect semi-transparent objects
- Pre-fault indication and output (dynamic and static)
- Multifunction input
- Parameterisable via optical communication link (e.g. free step values for time function)
- Connector (M12x1) 90° adjustable position
- Protection class IP68
- All materials approved for food industry applications

Dimensions

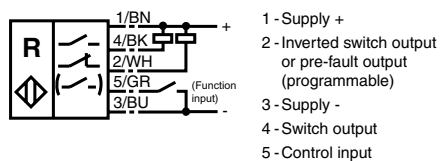


Connectors, mounting accessories etc... see "accessories" section

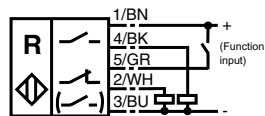
e.g. connectors: V15-G-2M-PVC (straight)
V15-W-2M-PUR (angled)

Electrical connection

A0:



A2:



Technical data

Valid for the whole family

General specifications

Sensing range	0 ... 6000 mm
Reference target	Retro-reflector 100 mm x 100 mm Type ORR 100
Light type	Red light 660 nm
Diameter of the light spot	200 mm at a distance of 6000 mm
Ambient light limit	≤ 10000 Lux sun light ≤ 7500 Lux halogen light
Reflector range	600 ... 6000 mm
Standard conformity	EN 60947-5-2

Electrical specifications

Rated operational voltage	U_e 10 ... 30 V DC, ripple 10 % _{SS}
No-load supply current	I_0 ≤ 25 mA
Time delay before availability	t_v ≤ 80 ms (with time delay before availability)

Indicating/operating means

LED yellow	Switching state
LED green	Power on, blinking with 2 Hz or 4 Hz in TEACH-IN mode
LED red	2 Hz flashing: pre-fault indication 65 ms: press the key to quit 1.5 s: fault by TEACH-IN
Key	+/- for the adjustment of the sensitivity and TEACH-IN

Output

Rated operational current	I_e 200 mA, every output, short and overload protected
Voltage drop	U_d ≤ 2.5 V
Switching frequency	f ≤ 1 kHz
Switch-on delay	t_{on} 0.5 ms
Range hysteresis	H parameterisable

Input

Internal resistor	≥ 12 kOhm
Switch-on delay	t_{on} ≤ 3 ms
Switch-off delay	t_{off} ≤ 3 ms

Ambient conditions

Ambient temperature	-25 ... 70 °C (248 ... 343 K)
Storage temperature	-40 ... 70 °C (233 ... 343 K)

Mechanical specifications

Protection degree	IP68 according to EN 60529
Connection type	connector V15 (M12 x 1), 5 pin, rotatable through 90°

Material

Housing	PBT
Light exit	Scratch resistant plastic plate
Connector	AlSi
Dove tail	AlSi
Mass	60 g

Version data

Model number

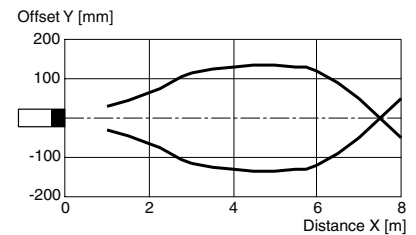
	OCS6000-F22-A0-V15	OCS6000-F22-A2-V15
Output type	2 switch outputs npn, parameterisable as - NO/NC (antivalent) - NO and pre-fault indication - NC and pre-fault indication	2 switch outputs pnp, parameterisable as - NO/NC (antivalent) - NO and pre-fault indication - NC and pre-fault indication
Input type	1 control/test input, non active: ≥ 7 V or open; active: ≤ 3 V	1 control/test input, non active: ≤ 3 V or not connected; active: ≥ 7 V

Model number

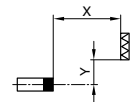
OCS6000-F22-A0-V15
OCS6000-F22-A2-V15

Characteristic curves

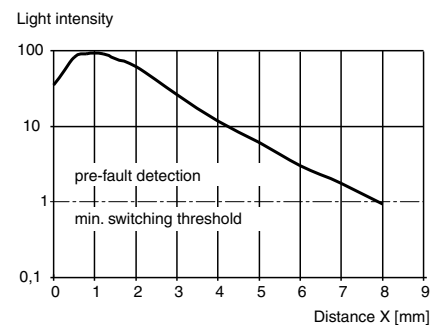
Characteristic response curve



Permissible distance (offset) between optical axis and retro-reflector.



Relative Light Intensity



Light spot diameter = f (Distance)

