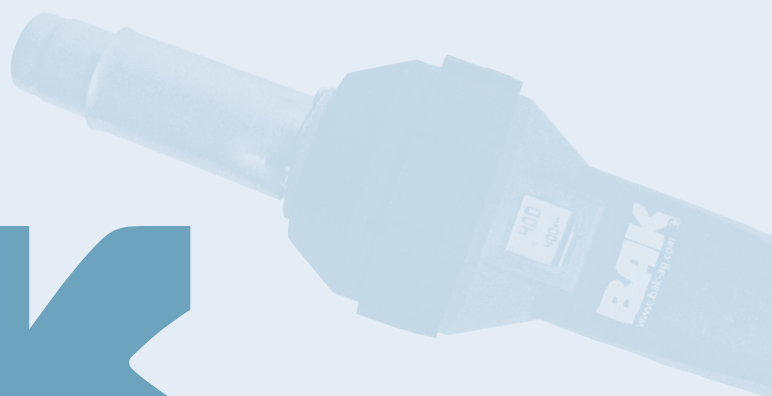
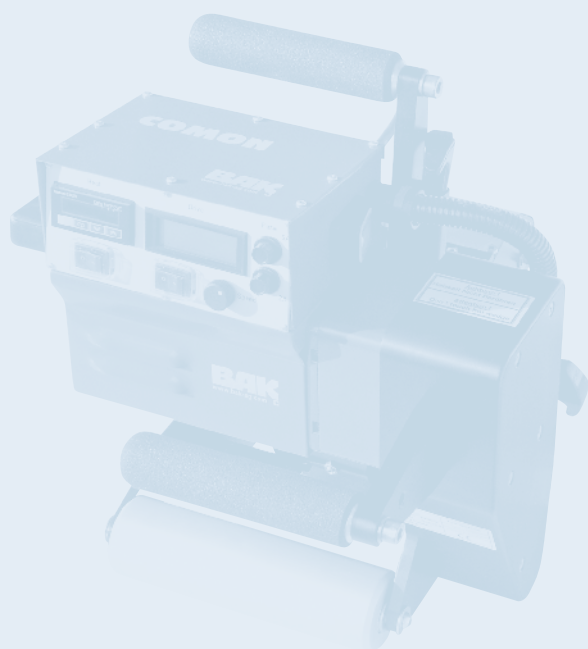


HEAT ON

Plastic welding machines



BAK

www.bak-ag.com



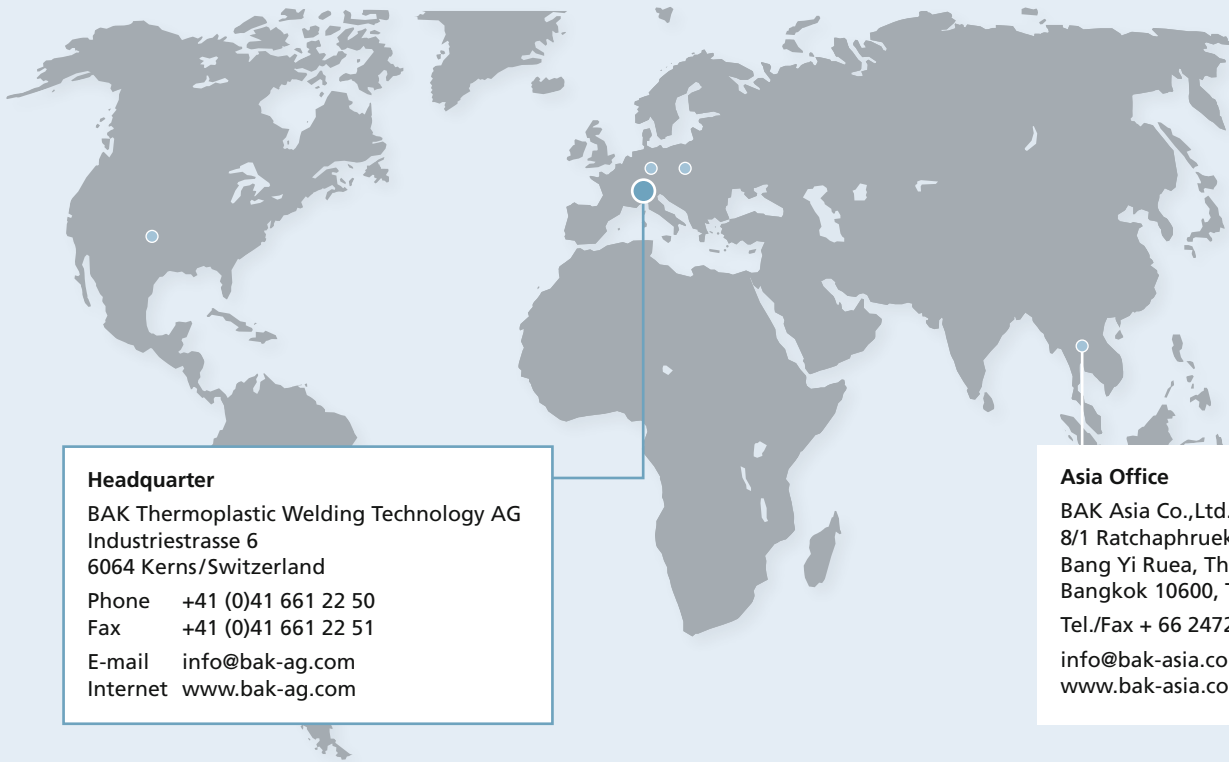
BAK Thermoplastic
Welding Technology AG

Industriestrasse 6
6064 Kerns / Switzerland

E-Mail info@bak-ag.com

Telefon +41 (0)41 661 22 50
Fax +41 (0)41 661 22 51

HEAT ON



Headquarter

BAK Thermoplastic Welding Technology AG
Industriestrasse 6
6064 Kerns/Switzerland
Phone +41 (0)41 661 22 50
Fax +41 (0)41 661 22 51
E-mail info@bak-ag.com
Internet www.bak-ag.com

Asia Office

BAK Asia Co.,Ltd.
8/1 Ratchaphruek
Bang Yi Ruea, Thon Buri
Bangkok 10600, Thailand
Tel./Fax + 66 24724480
info@bak-asia.com
www.bak-asia.com

BAK Thermoplastic Welding Technology AG is a leading manufacturer of plastic welding equipment, extruder, air heaters and blowers.

We present the best solutions for plastic fabrication, pipe construction, roofing, civil engineering, tunnelling, process heat, tarpaulins, flooring and much more.

BAK is a traditional Swiss company with head quarter in Kerns, Obwalden. Our production- and development facilities are in Switzerland, Germany and Austria.

We are offering a wide range of machines and accessories:

- Hot air tools (hand held)
- Wedge welding machines
- Hand extrusion welders
- Industrial heaters
- Heating- & folding machines
- Hot air welding machines
- Hot air blowers
- Industrial extruder
- Industrial blowers
- Test equipment

BAK, quality wins! Best quality products and customer service are the most important to us!

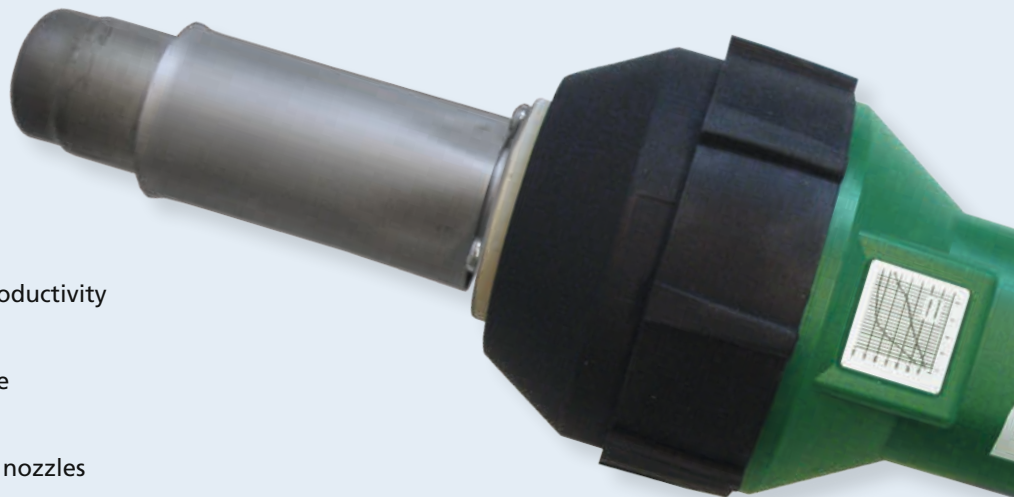
Through our experience of many years and the continuous development within the market we make sure to only offer best quality and service to our demanding customers. We guarantee ideal customer service all over the world with the trustful partnership to our distributors who are placed in over 40 countries.

Hot air welding tool

RION

Field tested, cost-effective, handy

- optimal performance / best price
- high speed welding enables high productivity
- stepless adjustment of temperature
- easy welding with ergonomic handle
- high quality
- heater tube for push fit or screw on nozzles
- large accessories range



The high-performance hand gun to weld all different types of thermoplastic materials, for roofing, flooring, tarps, plastic fabrication, etc.

Technical data

Voltage	V	120/230
Frequency	Hz	50/60
Power consumption	W	1600
Temperature	°C	20–650
Air flow	l/min	approx. 250
Static pressure	Pa	approx. 3000
Noise level	dB	64
Size	mm	100 x 340, handle Ø 56
Weight	kg	1,3 with cord
Markings		CE

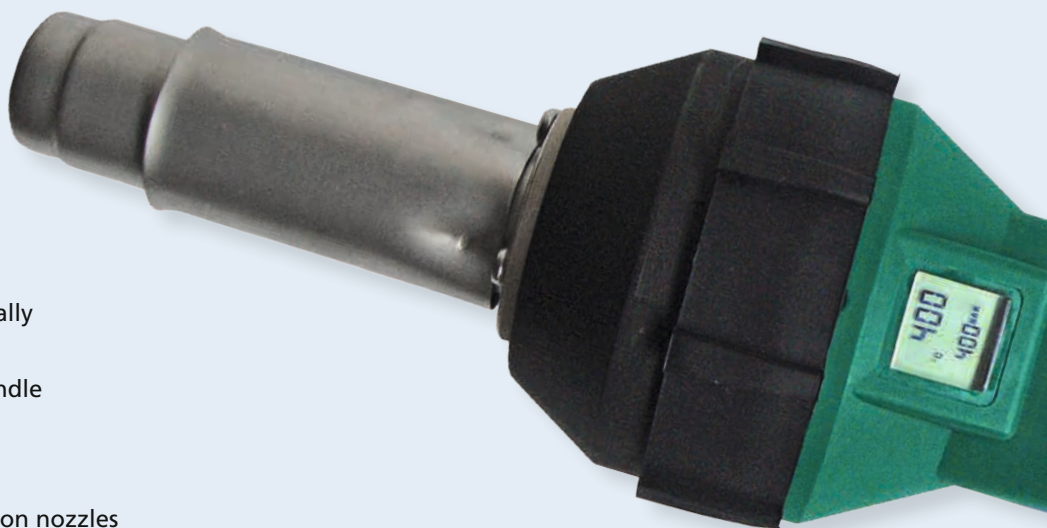
On request also available with brushless motor.

Hot air welding tool

RION DIGITAL

Ergonomic,
reliable,
precise

- digital read out of set and actual temperature
- stepless adjustment of electronically controlled temperature
- easy welding with ergonomic handle
- light and handy
- high quality
- heater tube for push fit or screw on nozzles
- large accessories range



We made welding easy for you! The practical digital hot air welding gun with ergonomic handle for the welding of all kinds of thermoplastics.

Technical data

Voltage	V	120/230
Frequency	Hz	50/60
Power consumption	W	1600
Temperature	°C	20–600
Air flow	l/min	approx. 250
Static pressure	Pa	approx. 3000
Noise level	dB	64
Size	mm	100 x 340, handle Ø 56
Weight	kg	1,3 with cord
Markings		CE

On request also available with brushless motor.

MARON

Small,
powerful,
flexible

- stepless adjustment of temperature
- adapter tube with heat protection
- for push fit or screw on nozzles
- air supply with blower type HD 140 or SorOn
- connected with blower SorOn for external application



The small welding tool for external air supply with high performance. With heater tube for push fit or screw on nozzles.

Technical data MarOn		
Voltage	V	230/120
Frequency	Hz	50/60
Power consumption	W	1550/1600
Temperature	°C	20–650
Min. air flow (20°C)	l/min	40
Size	mm	300x62, handle Ø 46
Weight	kg	1,2 with cord and hose
Markings		CE

Technical data MarOn, connected with SorOn		
Voltage	V	230/120
Frequency	Hz	50/60
Power consumption	W	1700
Temperature	°C	20–650
Air flow	l/min	max. ca. 300
Static pressure	Pa	ca. 3000
Weight	kg	2,5
Markings		CE

Hot air welding tool

WELDON

Small, flexible hose, precise

- digital read out of set and actual temperature
- stepless adjustment of electronically controlled temperature
- fatigue-proof welding thanks to ergonomic handle and rotating air hose
- cooled heater tube
- nozzle position 360° adjustable
- large accessories range



The small hand tool for plastic fabricators to weld thermoplastic materials. Air supply with external blower (BAK-Air Station) or compressed air.

Technical data

Voltage	V	230/120
Frequency	Hz	50/60
Power consumption	W	1000/600
Temperature	°C	20-600
Air flow	l/min	min. 40
Pressure	bar	max. 1
Size	mm	295 x 62, handle Ø 38
Weight	kg	0,75 with 3 m cord, air hose and Y-connection
Markings		CE

Hot air welding tool

WELDON S

Simple,
handy,
low cost

- movable and flexible
- stepless adjustment of temperature
- fatigue-proof welding thanks to ergonomic handle and rotating air hose
- cooled heater tube
- nozzle position 360° adjustable
- large accessories range



The low-cost hand tool with ergonomic handle for the easy welding of all thermoplastic materials. Air supply with external blower (BAK Air Station) or compressed air.

Technical data

Voltage	V	230/120
Frequency	Hz	50/60
Power consumption	W	600
Temperature	°C	20–450
Air flow	l/min	min. 40
Pressure	bar	max. 1
Size	mm	295 x 62, handle Ø 38
Weight	kg	0,75 with 3 m cord, air hose and Y-connection
Markings		CE

SORON, AIR STATION

Movable,
light,
strong

- small, but powerful
- compact
- for external air supply
- handy
- low noise



The small blowers with high power for air supply on the welding tools MarOn or WeldOn/WeldOn S.

Technical data		SorOn	Air Station N80	Air Station N200
Voltage	V	120/230	230	230
Frequency	Hz	50/60	50/60	50/60
Power consumption	W	100	86	215
Air flow (20°C)	l/min	400	80	200
Static pressure	Pa	5000		
Air outlet (outside)	mm	14,5	14,5	2x14,5
Size	mm	260x94, handle Ø 64	357x214x230	475x212x332
Weight	kg	1,2 with 3 m cord	6	15
Markings		CE	CE	CE

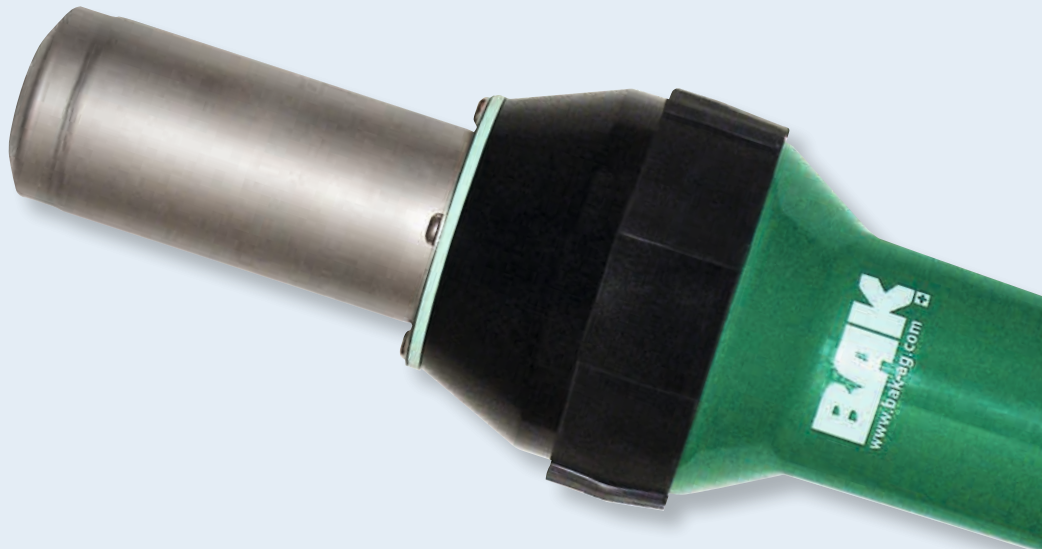
Hot air blower

ERON

Powerful, ergonomic, flexible

Perfect for:

- shrinking
- drying
- soldering
- heating
- activating
- welding
- bending



Stepless temperature adjustment up to 650°C. Powerful with ergonomic handle, for different applications and with a complete line of accessories like nozzles, reflectors, etc.

Technical data

Voltage	V	230
Frequency	Hz	50/60
Power consumption	W	2300/3400
Temperature	°C	20–650
Air flow	l/min	approx. 600
Static pressure	Pa	approx. 3000
Noise level	dB	64
Size	mm	320x94, handle Ø 64
Weight	kg	1,5 with cord
Markings		CE

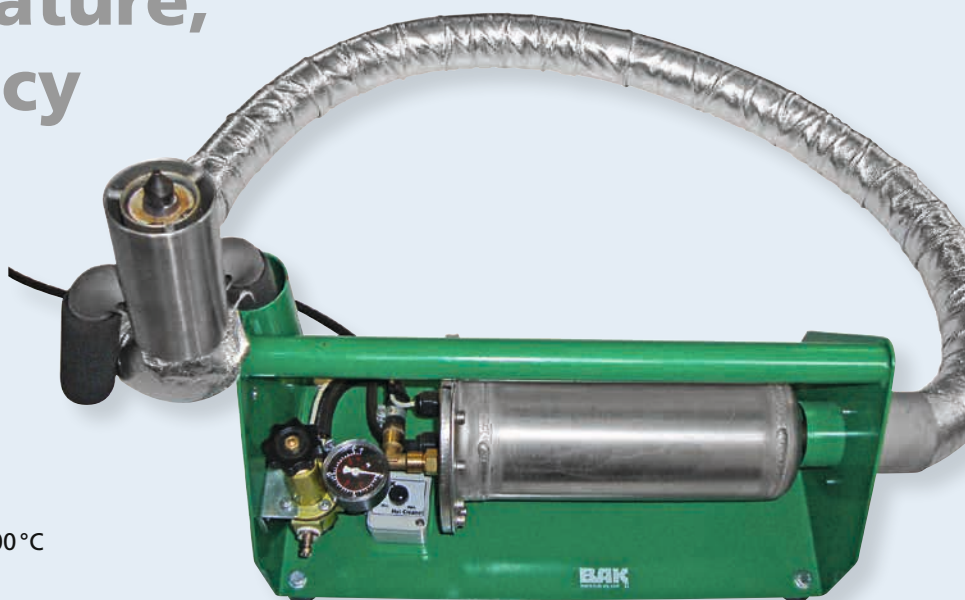
On request also available with brushless motor.

High pressure hot air tool

HOT CLEANER

High pressure,
high temperature,
high efficiency

- to heat compressed air up to 10 bar
- to clean hot runners and nozzles
- for deflashing
- stepless adjustable temperature up to 500°C
- revolving hot air head



The first high pressure hot air device to clean hot runners and nozzles.

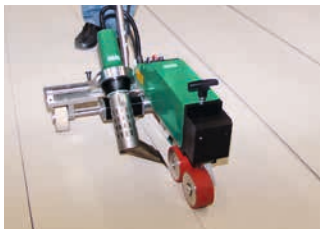
Technical data

Voltage	V	230
Frequency	Hz	50/60
Power consumption	W	3300
Temperature	°C	20-500
Max. pressure	bar	10
Min. air flow	l/min	300
Weight	kg	7,5
Protection class I		⊕

LARON

Ingenious,
efficient,
affordable

- continuous operation possible through brushless motors
- pivoting guide bar
- wrinkle-free welding
- easy maintenance because of standard components
- digital display showing temperature and speed
- automatic drive start system
- designed for the most demanding job sites
- high speed production



Wrinkle-free welding because of optimal design and balance. Economic and user friendly, high welding speed and field tested. For the welding of roofing membranes and tarpaulins.

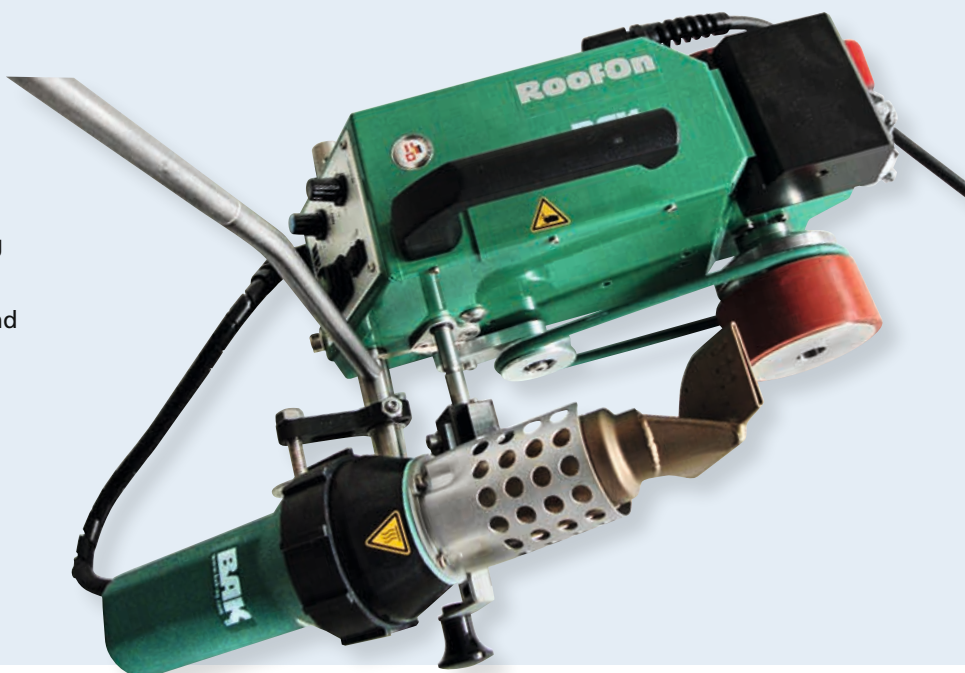
Technical data

Voltage	V	230/400
Frequency	Hz	50/60
Power consumption	W	4600/5700
Temperature	°C	20–620
Speed	m/min	max. 7
Size (l x w x h)	mm	610 x 410 x 320
Weight	kg	35
Markings		CE

ROOFON, ROOFON DIGITAL

Small, low-priced, light

- for the welding of thermoplastic roofing membranes
- stepless adjustment of speed, air flow and temperature with potentiometer
- automatic drive start system
- wrinkle-free welding
- seam width of 40 mm
- digital control and read out of temperature and speed (RoofOn Digital, see picture below)



Perfect seam quality of 40 mm even though its very light weight. The RoofOn guarantees wrinkle-free welding through our unique technology.

Technical data

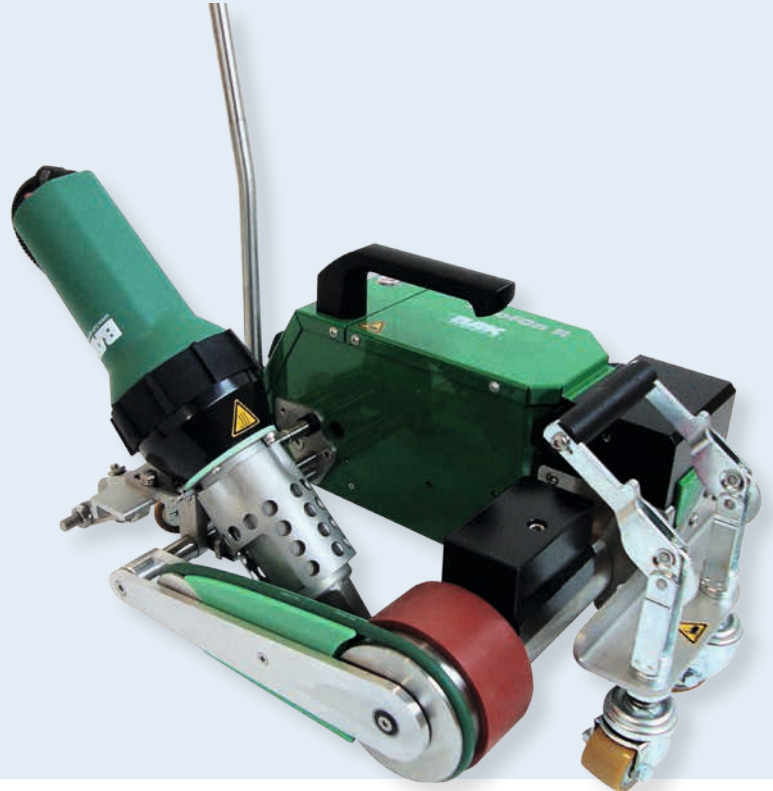
Voltage	V	230/120
Frequency	Hz	50/60
Power consumption	W	3400/2900
Temperature	°C	20–600
Speed	m/min	0,5–12
Air flow max. (20°C)	l/min	500
Air flow	%	50–100 stepless
Noise level LpA	dB	64
Size (l x w x h)	mm	450 x 330 x 220
Weight	kg	15 with 5 m cord
Protection class I		⊕

Roof welding machine

ROOFON R EDGE, ROOFON R EDGE DIGITAL

Extraordinary,
user-friendly,
compact

- for the welding of thermoplastic roofing membranes
- can weld as close as 20 mm to the edge
- adjustment of speed, air flow and temperature with potentiometer
- digital control and read out of temperature and speed (RoofOn R Edge Digital)
- automatic drive start system
- wrinkle-free welding



Unique system for welding as close as 20 mm to the edge in perfect quality.

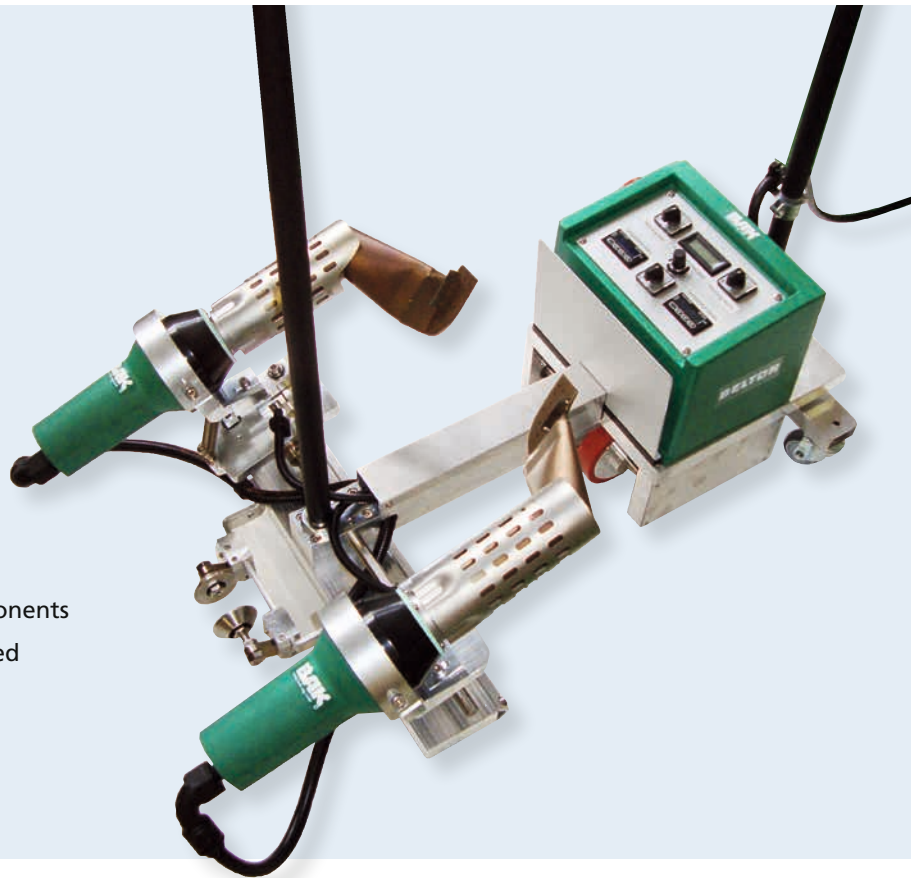
Technical data

Voltage	V	230/120
Frequency	Hz	50/60
Power consumption	W	3400/2900
Temperature	°C	20–600
Speed	m/min	0,5–12
Air flow max. (20°C)	l/min	500
Air flow	%	50–100 stepless
Noise level LpA	dB	64
Size (l x w x h)	mm	480 x 360 x 850
Weight	kg	26 with 5 m cord
Protection class I		⊕

BELTON P

**Fast,
robust,
special**

- two welding seams in one operation
- high welding performance
- easy maintenance because of standard components
- digital display showing temperature and speed
- automatic drive start system
- designed for the most demanding job sites
- for welding of thermoplastic profiles



For welding of thermoplastic profiles in one operation. Economic and user friendly, high welding speed and field tested.

Technical data

Voltage	V	400
Frequency	Hz	50/60
Power consumption	W	6400
Temperature	°C	20–620
Speed	m/min	max. 24
Size (l x w x h)	mm	900 x 530 x 340
Weight	kg	39
Markings		CE

BELTON T

Universal,
powerful,
high speed

- for welding of thermoplastic tapes
- high welding performance
- easy maintenance because of standard controllers
- digital display showing temperature and speed
- automatic drive start system
- easy to convert to different tape widths



For welding of tapes, curtain tapes and tarpaulin bows on truck covers.

Economic and user friendly thanks to the high welding speed and simple design.

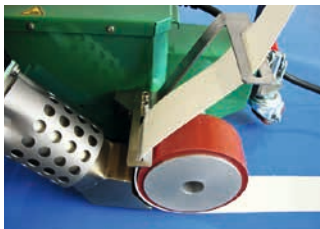
Technical data

Voltage	V	400
Frequency	Hz	50/60
Power consumption	W	6400
Temperature	°C	20-620
Speed	m/min	max. 24
Tape width	mm	50-150
Size (l x w x h)	mm	900 x 530 x 340
Weight	kg	39
Markings		CE

PLANON-BAND

Clever,
inexpensive,
efficient

- for welding of thermoplastic tapes
- approved and robust technology
- automatic drive start system
- economic and user-friendly
- stepless adjustment of speed and temperature with potentiometer



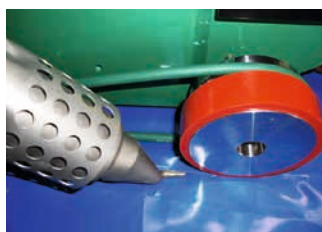
For welding of tapes and curtain tapes on truck covers. Available for 40 or 50 mm width tapes.

Technical data		
Voltage	V	230
Frequency	Hz	50/60
Power consumption	W	3700
Temperature	°C	20–600
Speed	m/min	0,5–12
Air flow max. (20°C)	l/min	500
Air flow	%	50–100 stepless
Noise level LpA	dB	50
Size (l x w x h)	mm	460 x 360 x 640
Weight	kg	18 with 5 m cord
Protection class I		⊕
Markings		CE

PLANON

Simple, robust, competitive

- for welding of coated fabrics, foils billboards, banners and tarps
- robust and mature technology
- automatic drive start system
- high welding speed
- economic and user-friendly
- adjustment of welding speed and temperature with potentiometer



Simple to operate and very reliable because of robust design. Available for 20, 30 or 40 mm width welding seam.

Technical data		
Voltage	V	230/120
Frequency	Hz	50/60
Power consumption	W	3400/2900
Temperature	°C	20-600
Speed	m/min	0,5-12
Air flow max. (20°C)	l/min	500
Air flow	%	50-100 variable
Noise level	dB	50
Size (l x w x h)	mm	460 x 360 x 310
Weight	kg	14 with 5 m cord
Markings		CE
Protection class I		⊕

SOLON

Superior,
fast,
reliable

- for welding of thermoplastic floors and linoleum
- stepless adjustment of speed, air flow and temperature with potentiometer
- automatic drive start system
- optical wall switch with backlash make sure the machine stops at the wall and the floor is not burned
- integrated deroller system



Due to a high air flow the SolOn has a very strong welding capacity. User-friendly because of approved and safe technology.

Technical data

Voltage	V	230/120
Frequency	Hz	50/60
Power consumption	W	3500/2900
Temperature	°C	20–600
Speed	m/min	0,5–12
Air flow max. (20°C)	l/min	500
Air flow	%	50–100 stepless
Noise level LpA	dB	64
Size (l x w x h)	mm	460 x 360 x 500
Weight	kg	16 with 5 m cord
Protection class I		⊕

ROTON

Handy,
precise,
reliable

- cuts welding grooves into all different types of floor coverings
- enables cut grooves along the walls
- integrated dust exhaust fan
- two levels of cutting speed
- three-point rest during milling to even unevenness
- adjustable guide roller enables milling of nap covers
- simple changing of cutting blade



The reliable grooving machine to cut welding grooves into all different types of floor coverings without dust.

Technical data

Voltage	V	230/120
Frequency	Hz	50/60
Power consumption level 1	W	350
Power consumption level 2	W	700
Speed level 1	U/min	14800
Speed level 2	U/min	18500
Noise level LpA	dB	78
Groove depth adjustment	mm	0-4, stepless
Size (l x w x h)	mm	210 x 210 x 262
Weight	kg	4,8 with 3 m cord
Markings		CE

Hot wedge welder

COMON

Adaptable, durable, efficient

- optimal performance/best price
- high welding capacity, speed and quality
- field tested electronics, service friendly
- maintenance-free servo drive motor
- stepless adjustment of pressure, speed, and temperature
- stable, lightweight and compact design
- material welding range: PE-LD, PE-HD, PE-C, PVC-P, PP, ECB, EVA, TPO



Simple, reliable operation combined with the maintenance-free servo motor and field tested electronics. The ComOn is designed for the most demanding jobsites.

Technical data

Voltage	V	230
Frequency	Hz	50/60
Power consumption	W	1700
Temperature	°C	20–420
Speed	m/min	0,8–5,0
Welding pressure	N	max. 1400
Size (l x w x h)	mm	460 x 300 x 330
Seam dimensions (other sizes on request)	mm	15–15–15
Weight	kg	14
Markings		CE

Hot wedge welder

MION

Compact, lightweight, high speed

- small and light but with very high welding performance
- perfect for thin material and overhead welding
- powerful drive system
- patented high tech ceramic wedge
- stepless adjustment of all welding parameters
- user friendly operation
- material welding range: PE-LD, PE-HD, PE-C, PVC-P, PP, ECB, EVA, TPO



The smallest and lightest compact wedge welder in the world. For the welding of all different material without changing the wedge.

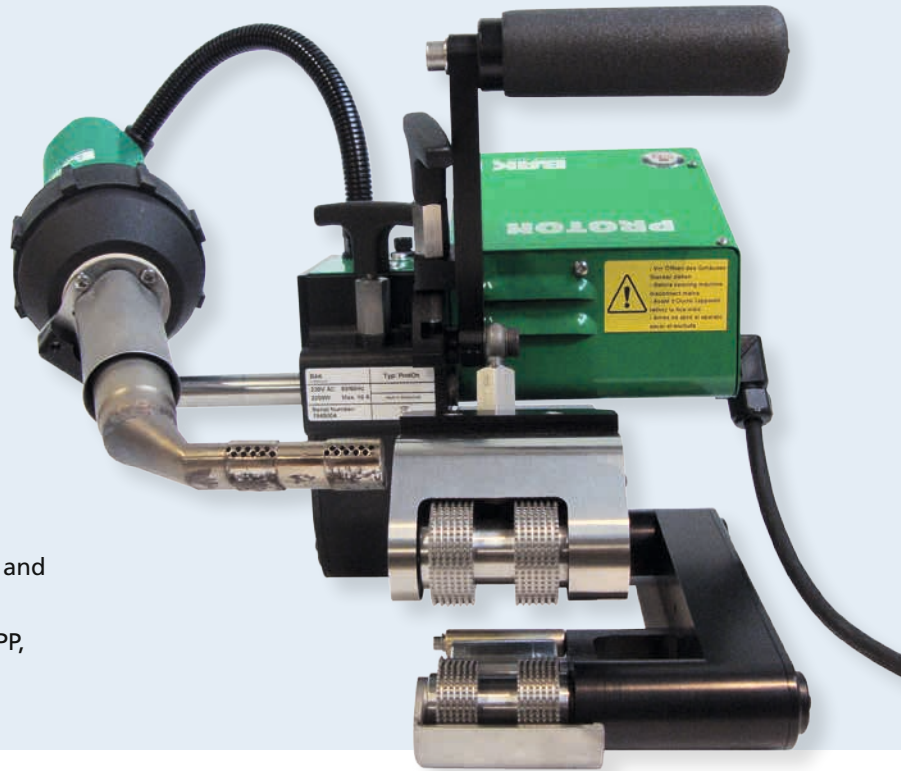
Technical data

Voltage	V	120/230
Frequency	Hz	50/60
Power consumption	W	1500
Temperature	°C	20–500
Speed	m/min	0,8–5,5
Welding pressure	N	max. 1000
Size (l x w x h)	mm	210 x 210 x 210
Seam dimensions (other sizes on request)	mm	15–15–15
Weight	kg	5,6 with 5 m cord
Markings		CE

PROTON

User-friendly,
robust,
compact

- small, light and very robust
- drive and heater motor brushless
- for thin material and overhead welding
- simple to operate
- stepless adjustment of all welding parameters and air flow
- material welding range: PE-LD, PE-HD, PVC-P, PP, ECB, EVA, TPO



The small and light automatic welding machine to weld all different kind of materials. For civil engineering and tunnel construction. Drive- and heater motor brushless. Combined wedge with hot air and contact.

Technical data

Voltage	V	230/120
Frequency	Hz	50/60
Power consumption	W	2300
Temperature	°C	max. 550
Speed	m/min	max. 5
Welding pressure	N	max. 1000
Size (l x w x h)	mm	370 x 340 x 330
Seam dimensions (other sizes on request)	mm	15 - 15 - 15
Weight	kg	9
Markings		CE

Tensiometer

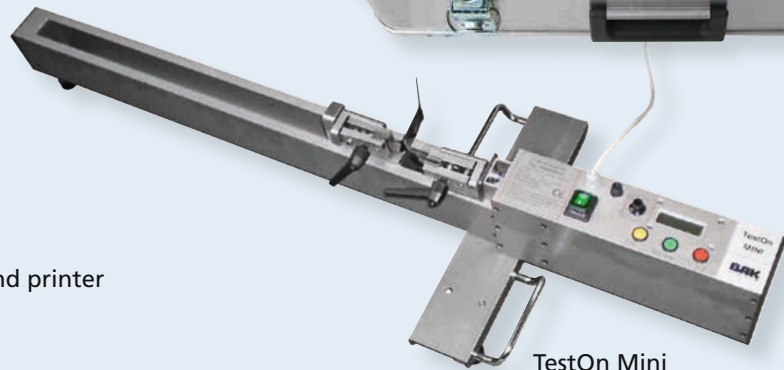
TESTON

Handy,
field tested,
precise

- for shear- and tensile tests
- simple clamping of test material
- digital display
- with integrated recording system and printer
- test speed adjustable



TestOn



TestOn Mini



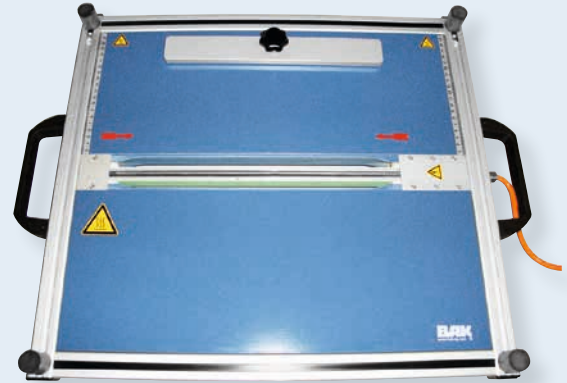
The tensiometer to test the welding seams.
High precise test result on construction side.

Technical data		TestOn	TestOn Mini
Voltage	V	100-240	100-240
Frequency	Hz	50/60	50/60
Power consumption	W	250	135
Test speed	mm/min	10-100	10-100
Test way	mm	280	500
Max. force	N	2000	2000
Weight	kg	20	10
Protection class I		⊕	⊕

HEAT BATTEN

Small,
flexible,
low-priced

- electronic controlled heating element
- digital display showing set and actual temperature
- timer with acoustic alarm
- parallel limit stop as accessory



Mini heat batten

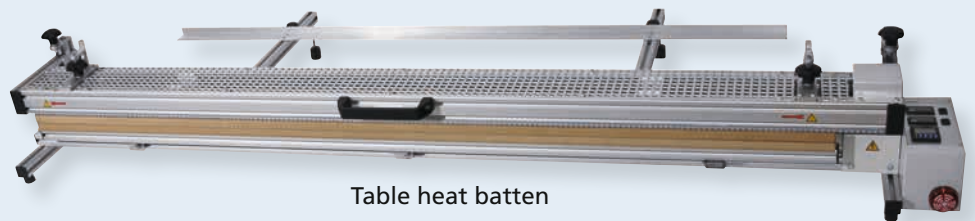
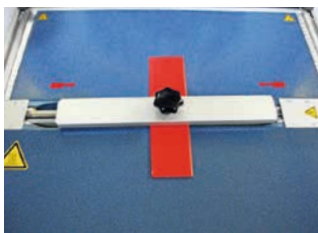


Table heat batten



The mini heat batten for bending of small displays or other thermoplastic parts and films.
The table heat batten for bending of thermoplastic material up to 12 mm thickness and films up to 1 mm.

Technical data		Mini heat batten	Table heat batten with single heating system	Table heat batten with upper- and lower heating system
Voltage	V	230	230	230
Frequency	Hz	50/60	50/60	50/60
Power consumption	W	250	500–1600 depending on working width	1400–3200
Max. working width	mm	300	500, 1000, 1500, 2000, 2500 or 3000	500, 1000, 1500, 2000, 2500 or 3000
Max. material thickness	mm	4	6	12
Weight	kg	8,2	7–24	22–46
Protection class I		⊕	⊕	⊕

ACCESSORIES



Pressure roller 28 mm (silicon)
Order no. 5106977



Hand grooving tool
Order no. 5106966



Wide slot nozzle (Ø 32 mm) 40 mm
push fit
Order no. 5107132



Pressure roller 40 mm (silicon)
Order no. 5106975



Spatula
Order no. 5106969



Wide slot nozzle (Ø 32 mm) 40 mm perforated
push fit
Order no. 5107133



Pressure roller 28 mm (PTFE)
Order no. 5106976



Spatula slide
Order no. 5200092



Angled nozzle SP20
right Order no. 6660004
left Order no. 6660005



Pressure roller 40 mm (PTFE)
Order no. 5106971



Wide slot nozzle (Ø 32 mm) 20 mm
push fit
Order no. 5107123



Wide slot nozzle (Ø 50 mm) 70 x 10 mm
Order no. 5107258



Pressure roller 80 mm (silicon)
Order no. 5106974



Angled nozzle (Ø 32 mm) 20 mm 90°
push fit
Order no. 5107124



Wide slot nozzle (Ø 50 mm) 75 x 2 mm
Order no. 5107266



Pressure roller with ball bearings (brass)
Order no. 5106972



Angled nozzle (Ø 32 mm) 20 mm 60°
push fit
Order no. 5107125



Wide slot nozzle (Ø 50 mm) 150 x 12 mm
Order no. 5107270



Chamfer plane
Order no. 5201445



Wide slot nozzle (Ø 32 mm) 30 x 2 mm 15°
push fit
Order no. 5105494



Tubular nozzle (Ø 32 mm) 5 mm
push fit
Order no. 5100303

ACCESSORIES



Tacking nozzle

push fit
on tubular nozzle 5 mm
Order no. 5106996



Drawing nozzle without tacking tip

screw on M14
Profile 5,7 mm 5113877
Profile 7,0 mm 5106986



Sieve reflector (\varnothing 32 mm) 35 x 20 mm

Order no. 6107338



Speed welding nozzle

push fit
on tubular nozzle 5 mm
Round 3 mm 5106989
Round 4 mm 5106990
Round 5 mm 5106991



Draw nozzle with tacking tip

screw on M14
Profile 5,7 mm 5113670
Profile 7,0 mm 5113671



Sieve reflector (\varnothing 32 mm) 50 x 35 mm

Order no. 6107337



Speed welding nozzle

push fit
on tubular nozzle 5 mm
Profile 5,7 mm 5106992
Profile 7,0 mm 5106993



Angled adapter 25° angular

for draw nozzle M14
Order no. 5201020



Scraper short 100 mm

Order no. 5200142



Tubular nozzle 5 mm

screw on M14
Order no. 5105622



Angled adapter 40° angular

for draw nozzle M14
Order no. 5201021



Scraper long 220 mm

Order no. 5200143



Tacking nozzle

screw on M14
Order no. 5106988



Adapter with thread M10 (\varnothing 32 mm)

Order no. 5201013



Scraper

Order no. 5106967



Drawing nozzle

screw on M14
Round 3 mm 5113876
Round 4 mm 5113874
Round 5 mm 5113875



Adapter with thread M14 (\varnothing 32 mm)

Order no. 5201014



Scraper 2 edge

Order no. 5201470



Drawing nozzle with tacking tip

screw on M14
Round 3 mm 5113666
Round 4 mm 5113399
Round 5 mm 5113873



Sieve reflector 10 x 12 mm (\varnothing 8,25 mm)

push fit
on tubular nozzle 5 mm
Order no. 5107324



Scraper 3 edge

Order no. 5201440



Scraper with double handle
Order no. 5200140



Overlap kit PlanOn
20 mm Order no. 5230155
30 mm Order no. 5230156
40 mm Order no. 5230157



Test needle PVC
Order no. 5201700



Welding seam planer
Order no. 5200146



Pressure roller power
Silicon 40 mm 5106983
PTFE 40mm 5106984



Test needle PE
Order no. DX073



Hook knife with cover
Order no. 5800000



Holder WeldOn
Order no. D-1538



Tensiometer Handy
Order no. 5200171



Hem kit PlanOn
Adjustable for hem width
20, 25, 30, 35, 40 mm
Order no. 5230109



Bitumen welding kit LarOn
80 mm Order no. 6108923
100 mm Order no. 6108924



Sheet puller
Order no. DX071



Keder kit TarpOn
20 mm Order no. 5230189
30 mm Order no. 5230192
40 mm Order no. 5230193



Metal case RiOn/ErOn
Order no. 5201000



Metal case PlanOn/RoofOn/ComOn
Order no. 5201008



Fillet coater
Order no. 5201324



Metal case LarOn
Order no. 5201001



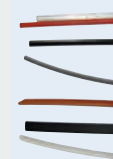
Carbide blade
for RotOn
Round 2,8 mm 6102403
Round 3,5 mm 6102405
Trapeze 3,5 mm 6102401



Vandalism kit PlanOn Band
Order no. 5230294



JAMAS Membrane cutter
Order no. 5201230



Welding rod
Different types, profiles and colours

HeatOn-GROUP

— YOUR BEST CHOICE —

Consulting – Sales – Training – Service – Development

Beratung – Verkauf – Schulung – Service – Entwicklung

BAK
www.bak-ag.com 

DOHLE
www.dohle-extruder.de

HERZ
www.herz-gmbh.com



BAK Thermoplastic Welding Technology AG

Industriestrasse 6, 6064 Kerns/Switzerland

Tel. ++41 (0)41 661 22 50, Fax ++41 (0)41 661 22 51

e-mail info@bak-ag.com

Dohle Extrusionstechnik GmbH

Eitorfer Strasse 1, 53809 Ruppichteroth/Germany

Tel. ++49 (0)2295 902960, Fax ++49 (0)2295 902961

e-mail info@dohle-extruder.de

Herz GmbH

Biberweg 1, 56566 Neuwied/Germany

Tel. ++49 (0)2622 810 86, Fax ++49 (0)2622 810 80

e-mail info@herz-gmbh.com