

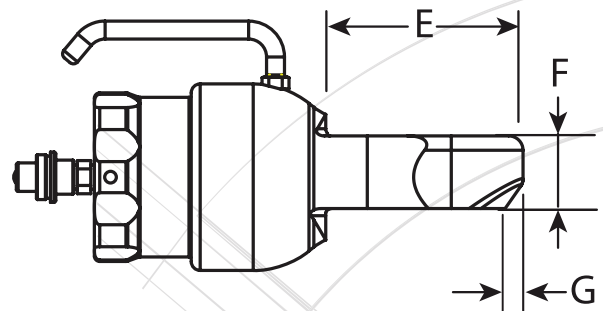
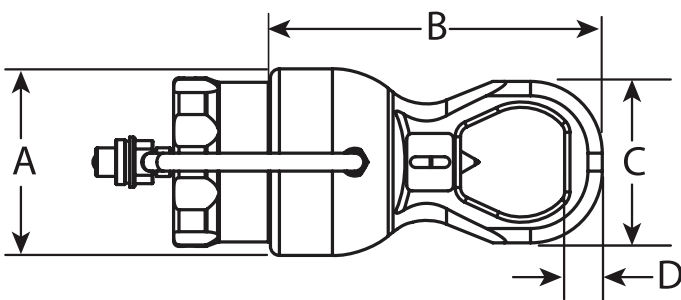
SPXFLOW
 >Bolting Systems™

Hydraulic Nut Splitters with External Pump



- » Metric size bolt diameter: M20 - M90, Nut A/F : 30 mm - 130 mm.
- » Inch size bolt diameter: ¾" - 3½" , Nut A/F : 1¼" - 5. 3/8".
- » Designed to fit AN E B.16.5 flanges.
- » Versatile, reliable and trouble-free operations.
- » Blade positioning scale to eliminate bolt damage.
- » Built-in safety relief valve to protect tool & operator.
- » Twin line hydraulic version available for subsea use.
- » Operates off a standard 10,000 psi (700 bar) pump unit.
- » Will work with some API flanges – contact factory for details.
- » Cutting depth fixed - Nut size adjustable via rotating cylinder!

Our hydraulic nut splitter offers a reliable and effective solution to the removal of seized and corroded nuts.



SPXFLOW Flanş Tip Hidrolik Somun Patlatma Ekipmanları
 >Bolting Systems™ Hydraulic Nut Splitters

| Standard | Sub Sea App. | Cutter Head | Bolt Dia. | | Nut A/F | | A | B | C | D | E | F | G | Weight |
|----------|--------------|-------------|-----------|--------|----------|-----|-----|-----|-----|------|-----|-------|----|--------|
| | | | Imperial | Metric | Inch | mm | | | | | | | | |
| ENS1-C | ENS1-C-SS | ENS1-1H | 3/4" | M20 | 1 1/4" | 30 | 104 | 228 | 76 | 18 | 104 | 40.5 | 9 | 6.7 |
| | | | 7/8" | M22 | 1 7/16" | 32 | | | | | | | | |
| | | | 1" | M24 | 1 3/8" | 36 | | | | | | | | |
| | | | - | M27 | - | 41 | | | | | | | | |
| | | ENS1-2H | 3/4" | M20 | 1 1/4" | 30 | 104 | 239 | 90 | 21 | 110 | 40.5 | 10 | 6.9 |
| | | | 7/8" | M22 | 1 7/16" | 32 | | | | | | | | |
| | | | 1" | M24 | 1 3/8" | 36 | | | | | | | | |
| | | | 1 1/8" | M27 | 1 13/16" | 41 | | | | | | | | |
| | | | 1 1/4" | M30 | 2" | 46 | | | | | | | | |
| | | | - | M33 | - | 50 | | | | | | | | |
| ENS2-C | ENS2-C-SS | ENS2-1H | 1 1/8" | M30 | 1 13/16" | 46 | 138 | 305 | 102 | 22 | 132 | 57.5 | 6 | 15.8 |
| | | | 1 1/4" | M33 | 2" | 50 | | | | | | | | |
| | | | 1 3/8" | M36 | 2 3/16" | 55 | | | | | | | | |
| | | | 1 1/2" | M39 | 2 3/8" | 60 | | | | | | | | |
| | | ENS2-2H | 1 1/8" | M30 | 1 13/16" | 46 | 138 | 314 | 114 | 23 | 141 | 57.5 | 6 | 16 |
| | | | 1 1/4" | M33 | 2" | 50 | | | | | | | | |
| | | | 1 3/8" | M36 | 2 3/16" | 55 | | | | | | | | |
| | | | 1 1/2" | M39 | 2 3/8" | 60 | | | | | | | | |
| | | | 1 5/8" | M42 | 2 9/16" | 65 | | | | | | | | |
| | | | 1 3/4" | M45 | 2 3/4" | 70 | | | | | | | | |
| ENS3-C | ENS3-C-SS | ENS3-1H | 1 3/4" | M45 | 2 3/4" | 70 | 190 | 406 | 132 | 28 | 189 | 80.5 | 8 | 42 |
| | | | 1 7/8" | M48 | 2 15/16" | 75 | | | | | | | | |
| | | | 2" | M52 | 3 1/8" | 80 | | | | | | | | |
| | | ENS3-2H | 1 3/4" | M45 | 2 3/4" | 70 | 190 | 416 | 145 | 30 | 199 | 80.5 | 8 | 42.5 |
| | | | 1 7/8" | M48 | 2 15/16" | 75 | | | | | | | | |
| | | | 2" | M52 | 3 1/8" | 80 | | | | | | | | |
| | | | 2 1/4" | M56 | 3 1/2" | 85 | | | | | | | | |
| | | ENS3-3H | 1 3/4" | M45 | 2 3/4" | 70 | 190 | 426 | 160 | 31.5 | 200 | 80.5 | 7 | 43 |
| | | | 1 7/8" | M48 | 2 15/16" | 75 | | | | | | | | |
| | | | 2" | M52 | 3 1/8" | 80 | | | | | | | | |
| | | | 2 1/4" | M56 | 3 1/2" | 85 | | | | | | | | |
| | | | 2 1/2" | M60 | 3 7/8" | 90 | | | | | | | | |
| | | - | M64 | - | 95 | | | | | | | | | |
| | | ENS3-4H | 1 3/4" | M45 | 2 3/4" | 70 | 190 | 437 | 174 | 35 | 204 | 80.5 | 9 | 44 |
| | | | 1 7/8" | M48 | 2 15/16" | 75 | | | | | | | | |
| | | | 2" | M52 | 3 1/8" | 80 | | | | | | | | |
| | | | 2 1/4" | M56 | 3 1/2" | 85 | | | | | | | | |
| | | | 2 1/2" | M60 | 3 7/8" | 90 | | | | | | | | |
| | | | 2 3/4" | M64 | 4 1/4" | 95 | | | | | | | | |
| | | | - | M68 | - | 100 | | | | | | | | |
| - | M72 | - | 105 | | | | | | | | | | | |
| ENS4-C | ENS4-C-SS | ENS4-1H | 2 3/4" | M76 | 4 1/4" | 110 | 235 | 474 | 189 | 36.5 | 235 | 110.5 | 4 | 73 |
| | | | 3" | M80 | 4 5/8" | 115 | | | | | | | | |
| | | ENS4-2H | 2 3/4" | M76 | 4 1/4" | 110 | 235 | 495 | 219 | 41 | 240 | 110.5 | 3 | 75 |
| | | | 3" | M80 | 4 5/8" | 115 | | | | | | | | |
| | | | 3 1/4" | M85 | 5" | 120 | | | | | | | | |
| 3 1/2" | M90 | 5 3/8" | 130 | | | | | | | | | | | |