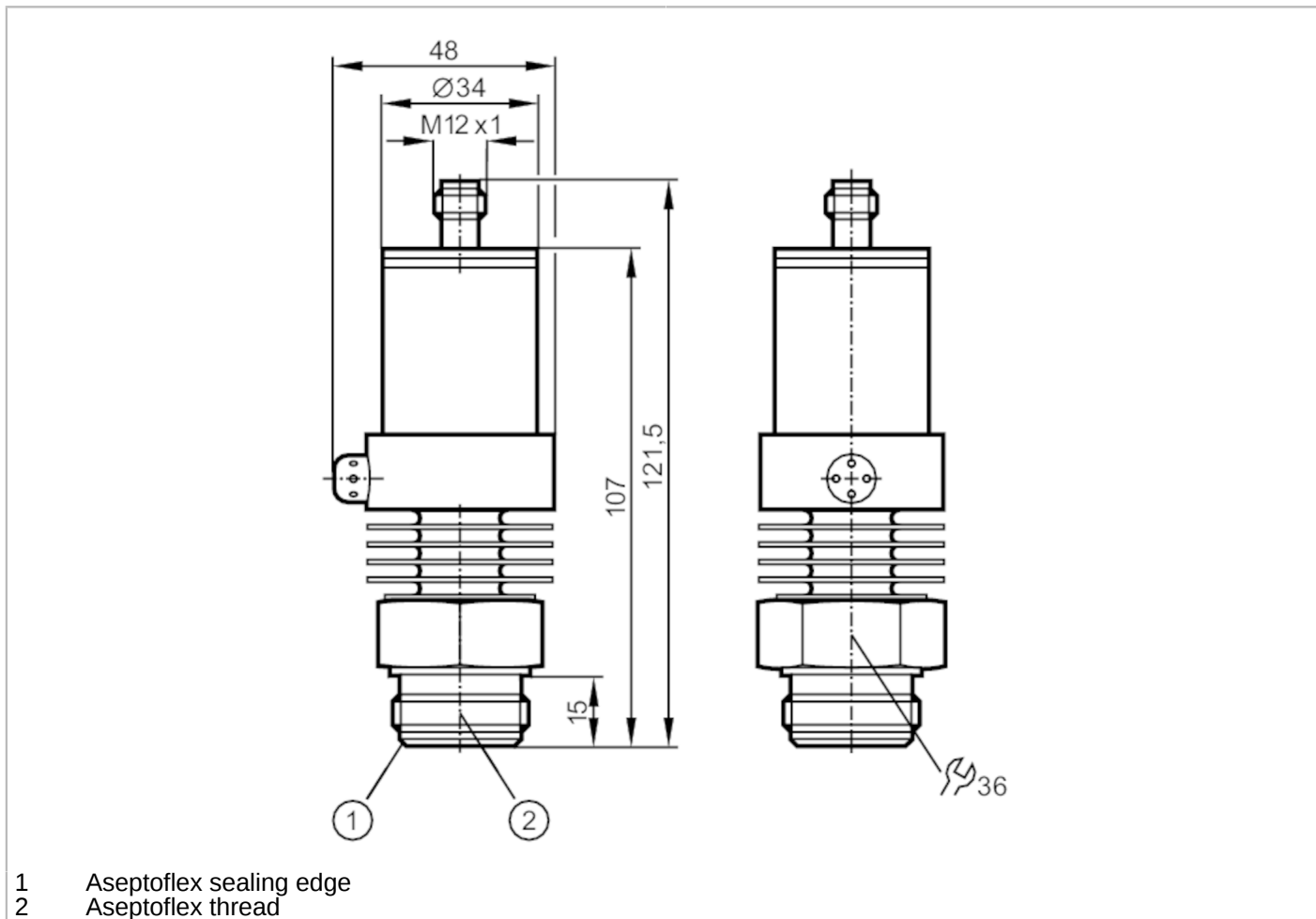


PM2053



Flush pressure transmitter

PM-025-RES30-E-ZVG/US/ IP



EC 1935/2004 EHEDG Certified FCM FDA

Product characteristics

Output signal	analog signal		
Measuring range	-1...25 bar	-15...363 psi	-0.1...2.5 MPa
Process connection	threaded connection Aseptoflex external thread Aseptoflex		

Application

System	gold-plated contacts		
Application	flush mountable for the food and beverage industry		
Media	viscous media and liquids with suspended particles; liquids and gases		
Medium temperature [°C]	-25...125; (145 max. 1h)		
Min. bursting pressure	350 bar	5070 psi	35 MPa
Pressure rating	100 bar	1450 psi	10 Mpa
Type of pressure	relative pressure		
No dead space	yes		

Electrical data

Operating voltage [V]	14...30 DC		
Min. insulation resistance [MΩ]	100; (500 V DC)		
Protection class	III		
Reverse polarity protection	yes		

PM2053



Flush pressure transmitter

PM-025-RES30-E-ZVG/US/ IP

Inputs / outputs			
Number of inputs and outputs	Number of analog outputs: 1		
Outputs			
Total number of outputs	1		
Output signal	analog signal		
Number of analog outputs	1		
Analog current output [mA]	4...20		
Max. load [Ω]	550; ($U_b = 24\text{ V}$; ($U_b - 13\text{ V}$) / 20 mA)		
Overload protection	yes		
Measuring/setting range			
Measuring range	-1...25 bar	-15...363 psi	-0.1...2.5 MPa
Analog start point	-1...18.8 bar	-15...272 psi	-0.1...1.88 MPa
Analog end point	5.3...25 bar	76...363 psi	0.53...2.5 MPa
In steps of	0.1 bar	1 psi	0.01 MPa
Factory setting		ASP = 0.0 bar	AEP = 25.0 bar
Accuracy / deviations			
Repeatability [% of the span]	< $\pm 0,1$; (with temperature fluctuations < 10 K; Turn down 1:1)		
Characteristics deviation [% of the span]	< $\pm 0,6$; (Turn down 1:1, linearity, incl. hysteresis and repeatability, limit value setting to DIN EN IEC 62828-1)		
Linearity deviation [% of the span]	< $\pm 0,5$; (Turn down 1:1)		
Hysteresis deviation [% of the span]	< $\pm 0,1$; (Turn down 1:1)		
Long-term stability [% of the span]	< $\pm 0,1$; (Turn down 1:1; per year)		
Temperature coefficient zero point [% of the span / 10 K]	< $\pm 0,1$; (0...80 °C)		
Temperature coefficient span [% of the span / 10 K]	< $\pm 0,2$; (0...80 °C)		
Reaction times			
Max. response time analog output [ms]	3		
Software / programming			
Parameter setting options	Zero point; span		
Interfaces			
Communication interface	EPS		
Operating conditions			
Ambient temperature [°C]	-25...80		
Storage temperature [°C]	-40...100		
Protection	IP 67		

PM2053



Flush pressure transmitter

PM-025-RES30-E-ZVG/US/ IP

Tests / approvals		
EMC	EN 61000-4-2 ESD	4 kV CD / 8 kV AD
	EN 61000-4-3 HF radiated	10 V/m
	EN 61000-4-4 Burst	2 kV
	EN 61000-4-6 HF conducted	10 V
Shock resistance	DIN IEC 68-2-27	50 g (11 ms)
Vibration resistance	DIN IEC 68-2-6	20 g (10...2000 Hz)
MTTF	[years]	271

Mechanical data		
Weight	[g]	474
Material	stainless steel (1.4404 / 316L); PEI; FKM	
Materials (wetted parts)	ceramics (99.9 % Al ₂ O ₃); stainless steel (1.4404 / 316L); surface characteristics: Ra < 0,4 / Rz 4; PTFE	
Min. pressure cycles	100 million	
Process connection	threaded connection Aseptoflex external thread Aseptoflex	

Remarks	
Remarks	The 3-A qualification is only valid if adapters with 3-A qualification are used for installation.
Pack quantity	1 pcs.

Electrical connection

Connector: 1 x M12; Contacts: gold-plated



Connection

