

# RO

**Robatech**  
Glueing Technology

## Concept C-series Adhesive Melters »The Economicals«

The Concept units melt and feed thermoplastic adhesives for the most varied applications. The modular appliances are characterized by their convenient operation and outstanding reliability.



## Wide application range

The adhesive melters of the Concept C series are available with two different piston pumps. They offer numerous combination possibilities to meet a multitude of requirements. Their modular structure makes them highly suitable for a great variety of applications in the packaging industry and in other industries.

- 1 tank size of 5 litres
- 2 piston pump types
- Connections for up to 2 heated hoses and 2 application heads

## Simple installation

The Concept melters enable simple mounting with optimal accessibility as well as a perfect hose layout for any type of installation.



Connections for maximum 2 heated hoses

- No operating elements on the side
- Optimal accessibility for filling, tank lid can be turned by 180°
- Suitable hose positioning for all directions – shorter glue hoses
- External mounting of the console
- Neutral conductor and phase monitoring protects the electronics

## Signals for safety, convenience

Various system interfaces and potential free I/O signals are available for integration in and communication with the machine or a higher-ranking system control.

## Precise adhesive application

The accurate temperature feedback control, the precisely working feed pumps, the multi-stage adhesive filter system, the evenly heated material hoses and the fast-reacting application heads result in a perfect and reliable adhesive application without stringing and drooling.

- Accurate temperature feedback control
- Electronic, double-acting piston pump switching-over without loss
- Small, fast-acting and reliable adhesive applicator heads
- Hand guns for spray and bead applications

## Short heating times and high melting capacity

The cast aluminium tank of special shape combined with optimal positioning of the heating elements guarantees a very short heating time and a high melting capacity at the lowest possible energy consumption.

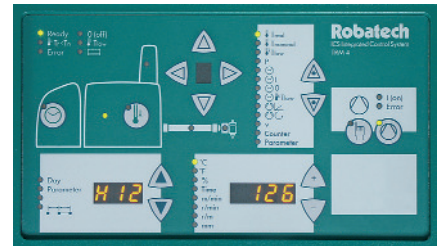


Tank with optional fill level sensor

## Fill-level supervision

This supervision, based on a capacitive sensor, checks the adhesive level in the tank, so that production stops due to an empty or overfilled tank are avoided.

## Straightforward operation



Operating field with schematic presentation

The operating field with the schematic presentation of the unit and the language-independent indication of the operation status by means of LEDs and codes guarantee a user-friendly, convenient operation.

## No nozzle obstructions



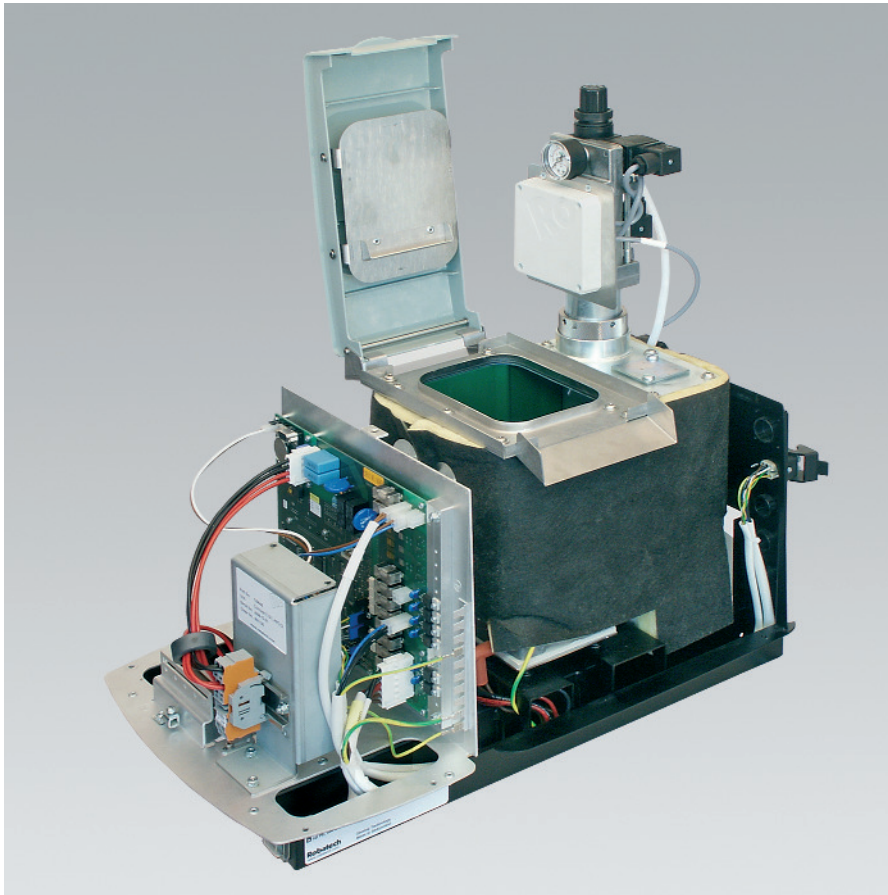
Suction filter for pump and fine filter at outlet

The individual temperature feedback control of tank, hoses and heads in combination with the automatic temperature reduction in case of a longer standstill prevent burning of the adhesive and contamination of the system. The three-stage filter system in tank, pump outlet and applicator head stops possible contaminants and prevents the nozzles from becoming blocked.



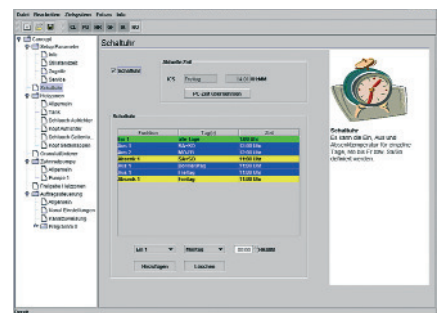
**Robatech**  
Glueing Technology

## Concept C5 melter with piston pump KPC12



## RobaPAR

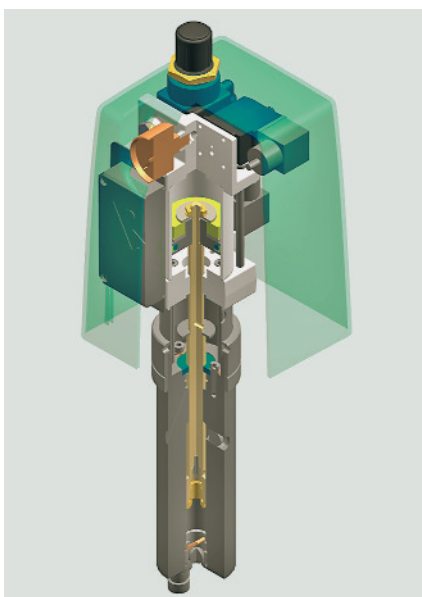
The PC tool »RobaPAR« allows the processing of all working data from the adhesive melter. Over the interfaces RS232 or Ethernet the data can be read from the melter and stored on a personal computer for further processing and data backup purposes. The loaded data are capable for editing and can be resaved to the melter. By means of a printer the collected working data are simple to document.



Screen with »RobaPar«

## Pumps to suit the purpose

In the interest of a high productivity and flexibility Robatech offers two piston pumps with different performance characteristics.



Standard piston pump KPC12

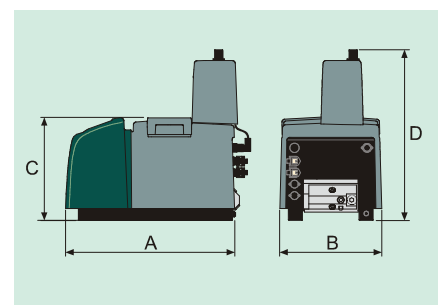
## Sets with hand guns

Complete sets with melter, hand gun and heated hose are suitable for the manual application in bead or spray form of all hotmelts and pressure sensitive adhesives. The hand guns are characterized by a high productivity and optimal operating convenience.



Handgun for bead or spray applications

## Dimensions



Concept	C5
A Length	556 mm
B Width	338 mm
C Height tank	340 mm
D Height unit	566 mm



**Robatech**  
Glueing Technology

## Technical data

<i>Basic unit</i>	<i>Concept C5</i>
Tank content	5 litres (305 in <sup>3</sup> )
Tank opening	150 × 110 mm
Melting rate (approx. value)	5 kg (11 lb) per hour
Feed pump	1 piston pump KPC 12 (standard) or KPC 5
Connections for hoses/heads	max. 2 hoses and 2 heads each
Working temperature	20...210° Celsius, tolerance ± 0.5°
Operating voltages	230 Volt AC, 1LNPE, max. 32A 200...240 Volt AC, 1ØPE, max. 32A Neutral conductor and phase monitoring standard
Mains frequency	50 / 60 Hz
Power consumption basic unit	1800 Watt
Ambient temperature	0...45° Celsius
Weight (with piston pump)	32 kg
Safety	Temperature protection, emergency stop input, program flow monitoring, pressure release tap
Interfaces	4 outputs and 4 inputs, freely configurable signal assignment
Options	Fill level monitoring, heating zone selection etc.

<i>Piston pumps</i>	<i>KPC 5</i>	<i>KPC 12 (Standard)</i>
Pumping rate per hour	5...50 kg (11...110 lb)	5...50 kg (11...110 lb)
Output pressure	max. 30 bar (435 psi)	max. 72 bar (1,044 psi)
Adhesive viscosity	100...20,000 mPas	
Compressed air supply	6 bar (87 psi), not oiled, cleaned, switched via emergency stop of the machine	
Air consumption	max. 11.4 l/min	max. 27.5 l/min

## Supplementary brochures on the Concept appliances:

- |                       |                    |                    |
|-----------------------|--------------------|--------------------|
| • Concept A series    | • Concept B series | • Concept 30       |
| • Profibus interface  | • Heated hoses     | • Pattern controls |
| • Jetting heads AX/SX | • Spray heads      | • Hand applicators |
| • Coating heads       | • Glue detection   | • Granule feeder   |



Robatech AG  
Pilatusring 10  
CH-5630 Muri / Switzerland  
Phone +41 56 675 77 00  
Fax +41 56 675 77 01  
Email [info@robatech.ch](mailto:info@robatech.ch)  
Internet [www.robatech.com](http://www.robatech.com)