

# ADAM-4021

# ADAM-4024

1-ch Analog Output Module with Modbus

4-ch Analog Output Module with Modbus



ADAM-4021



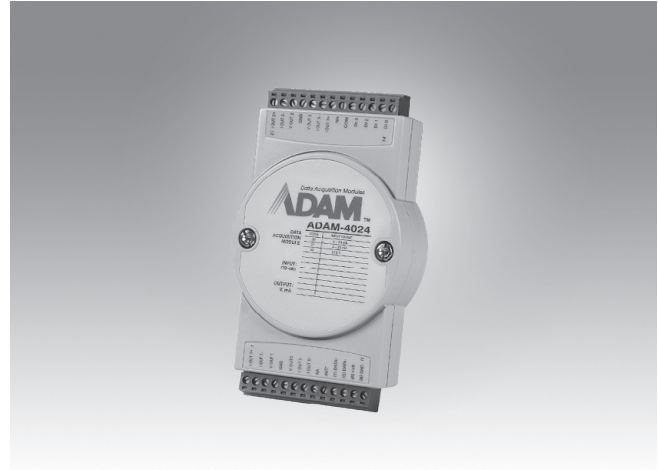
## Specifications

### General

- **Connectors** 1 x plug-in terminal blocks (#14 ~ 22 AWG)
- **Power Consumption** 1.4 W @ 24 V<sub>DC</sub>
- **Watchdog Timer** System (1.6 second)
- **Supported Protocols** ASCII command and Modbus/RTU

### Analog Output

- **Channels** 1
- **Output Impedance** 0.5 Ω
- **Output Range** 0 ~ 20 mA, 4 ~ 20 mA, 0 ~ 10 V
- **Output Type** mA, V
- **Accuracy** ±0.2% of FSR for current output  
±0.1% of FSR for voltage output
- **Current Load Resistor** 0 to 500 Ω (source)
- **Resolution** 12-bit
- **Isolation Voltage** 3,000 V<sub>DC</sub>
- **Programmable Output Slope** 0.125 ~ 128 mA/sec.  
0.0625 ~ 64.0 V/sec.
- **Readback Accuracy** ±1% of FSR
- **Span Temperature Coefficient** ±25 ppm/°C
- **Zero Drift**  
Voltage output: ±30 μV/°C  
Current output: ±0.2 μA/°C



ADAM-4024



## Specifications

### General

- **Connectors** 2 x plug-in terminal blocks (#14 ~ 28 AWG)
- **Power Consumption** 3 W @ 24 V<sub>DC</sub>
- **Watchdog Timer** System (1.6 second) & Communication
- **Supported Protocols** ASCII command and Modbus/RTU

### Analog Output

- **Channels** 4
- **Output Impedance** 0.5 Ω
- **Output Range** 0 ~ 20 mA, 4 ~ 20mA, ±10 V
- **Output Type** mA, V (Differential)
- **Accuracy** ±0.1 % of FSR for current output  
±0.1 % of FSR for voltage output
- **Current Load Resistor** Max. 500 Ω (source)
- **Voltage Load Resistor** Min. 1K Ω
- **Resolution** 12-bit
- **Isolation Voltage** 3,000 V<sub>DC</sub>
- **Programmable Output Slope** 0.125 ~ 128 mA/sec.  
0.0625 ~ 64.0 V/sec.
- **Span Temperature Coefficient** ±25 ppm/°C
- **Zero Drift**  
Voltage output: ±30 μV/°C  
Current output: ±0.2 μA/°C

### Digital Input

- **Channels** 4
- **Input Level** Logic level 0: 1 V max.  
Logic level 1: 10 ~ 30 V<sub>DC</sub>
- **Isolation Voltage** 3,000 V<sub>DC</sub>

## Common Specifications

### General

- **Power Input** Unregulated 10 ~ 30 V<sub>DC</sub>

### Environment

- **Operating Humidity** 5 ~ 95% RH
- **Operating Temperature** -10 ~ 70°C  
(14 ~ 185°F)
- **Storage Temperature** -25 ~ 85°C  
(-13 ~ 185°F)

## Ordering Information

- **ADAM-4021-F** 1-ch Analog Output Module with Modbus
- **ADAM-4024-B1E** 4-ch Analog Output Module with Modbus