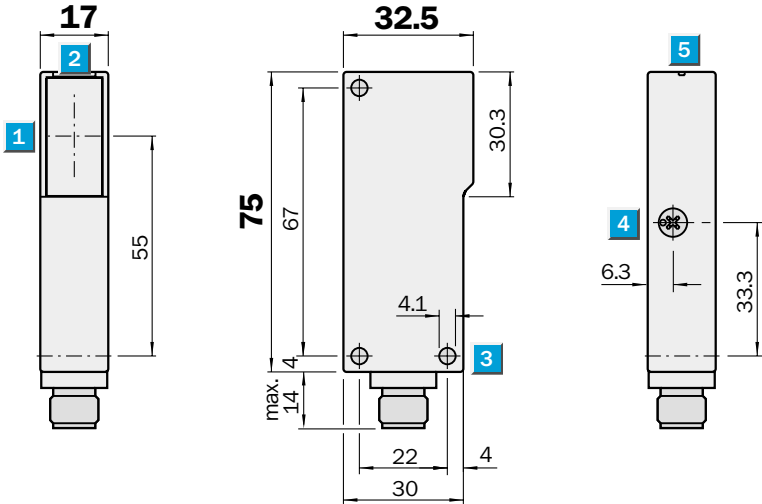


**Scanning range**  
7 m

Photoelectric reflex switches

- Insensitive to ambient light sources (HF lamps, flashing alarm lamps)
- No mutual interference if devices are installed opposite each other
- Operating temperature - 40 °C...+ 60 °C
- Fast response time
- Test input for system diagnosis, optional
- Autocollimation system

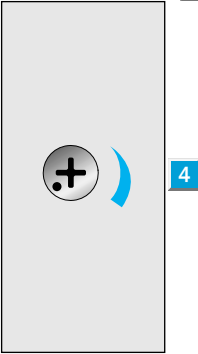
Dimensional drawing



Adjustments possible

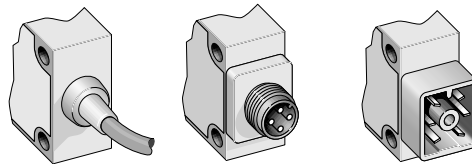
WL 18-2P 132	WL 18-2N 132
WL 18-2P 135	WL 18-2N 135
WL 18-2P 430	WL 18-2N 430
	WL 18-2N 630

- 1 Centre of optical axis
- 2 LED signal strength indicator
- 3 Mounting hole  $\varnothing$  4.1 mm
- 4 Sensitivity adjustment
- 5 Alignment sight

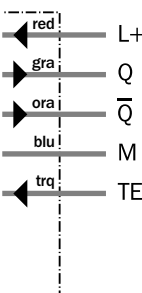


Connection types

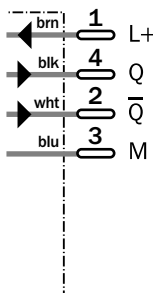
WL 18-2P 132	WL 18-2P 430	WL 18-2P 630
WL 18-2P 135	WL 18-2N 430	WL 18-2N 630
WL 18-2N 132		
WL 18-2N 135		



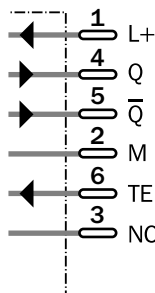
5 x 0.25 mm<sup>2</sup>



4-pin, M 12



6-pin



Accessories	page
Cable receptacles	496
Mounting brackets	510
Reflectors	520

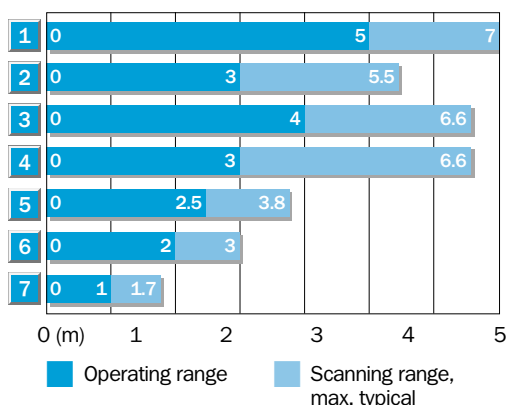
Technical data		WL 18-2	P 132	P 135	P 430	P 630	N 132	N 135	N 430	N 630
<b>Scanning range</b> , max. typ./on reflector	7 m/PL 80 A									
Sensitivity	adjustable									
<b>Light source</b> <sup>1), light type</sup>	LED, red light									
Light spot diameter	40 mm at 2 m									
<b>Supply voltage</b> $V_S$	10...30 V DC <sup>2)</sup>									
Ripple <sup>3)</sup>	$\leq 5 V_{SS}$									
Current consumption <sup>4)</sup>	< 25 mA									
<b>Switching outputs</b>	PNP, Q and $\bar{Q}$									
	NPN, Q and $\bar{Q}$									
Output current $I_A$ max.	100 mA									
PNP; signal voltage HIGH	$V_S - (< 2.9 V)$									
PNP; signal voltage LOW	Approx. 0 V									
NPN; signal voltage HIGH	Approx. $V_S$									
NPN; signal voltage LOW	< 1.5 V									
Response time <sup>5)/Max. switching freq.</sup> <sup>6)</sup>	< 500 $\mu$ s; 1000/s									
<b>Test input "TE"</b>										
PNP, sender OFF	Test input to 0									
NPN, sender OFF	Test input to $V_+$									
<b>Connection types</b>	Cable <sup>7)</sup> , 2 m									
	Cable <sup>7)</sup> , 5 m									
	Plug									
<b>VDE protection class</b> <sup>8)</sup>	<input type="checkbox"/>									
<b>Circuit protection</b> <sup>9)</sup>	A, B, C									
<b>Enclosure rating</b>	IP 67									
	IP 65									
<b>Ambient temperature</b> $T_A$	Operation -40 °C...+60 °C									
	Storage -40 °C...+75 °C									
<b>Weight</b>	Approx. 100 g									
<b>Polarising filter</b>										
<b>Housing material</b>	ABS, acrylonitrile butadiene styrene									

- 1) Average service life 100,000 h at  $T_A = +25$  °C
- 2) Limit values
- 3) May not exceed or fall short of  $V_S$  tolerances

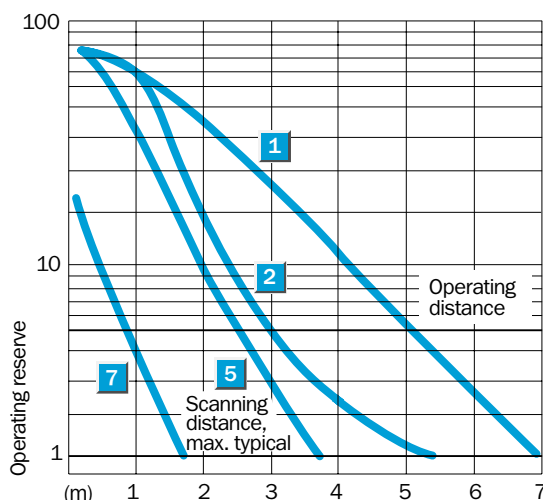
- 4) Without load
- 5) Signal transit time with resistive load
- 6) With light/dark ratio 1:1
- 7) Do not bend below 0 °C
- 8) Reference voltage 50 V DC

- 9) A =  $V_S$  connections reverse-polarity protected
- B = Output Q and  $\bar{Q}$  short-circuit protected
- C = Interference pulse suppression

**Scanning range and operating reserve**



Reflector type	Operating range
1 PL80 A	0...5.0 m
2 C 110	0...3.0 m
3 PL50	0...4.0 m
4 PL40 A	0...3.0 m
5 PL30 A	0...2.5 m
6 PL20 A	0...2.0 m
7 Reflective tape	0...1.0 m
Diamond Grade	



**Order information**

Type	Part no.
WL 18-2P 132	1 012 906
WL 18-2P 135	1 012 907
WL 18-2P 430	1 012 908
WL 18-2P 630	1 012 912
WL 18-2N 132	1 012 903
WL 18-2N 135	1 012 911
WL 18-2N 630	1 012 904
WL 18-2N 430	1 016 205