



KONICA MINOLTA

Giving Shape to Ideas



bizhub 552/652

Black & white A3 multifunctionals

Office systems bizhub 552/652



High-speed black & white output with all the trimmings

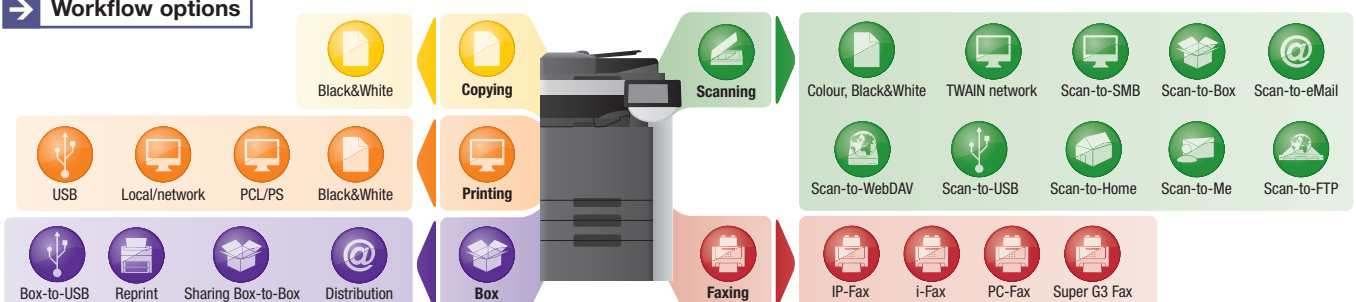
When high-speed black & white multifunctionality teams up with extensive colour scanning features and professional finishing versatility, most volume-intensive departments have found what they are looking for. Combining these important capabilities, the bizhub 552 and bizhub 652 offer the all-round answer to the diverse input and output requirements of many business fields, including order processing, logistics, controlling and others.

- The bizhub 552 and bizhub 652 combine fast and efficient colour scanning capabilities with high b/w output speeds of 55 or 65 pages per minute and thus enhance existing output fleets with perfect high-volume b/w printing capabilities. But as true multifunctionals they naturally provide complete communication functionalities, and print, copy, scan and fax. Most importantly, the bizhub 552/652's comprehensive capabilities ensure their seamless integration into almost any electronic workflow.
- Enhanced with Konica Minolta's efficient and versatile software applications, both are ideal tools for efficient document capture and distribution, helping to save time and reducing overall costs. Same as

the other devices in the Konica Minolta bizhub portfolio, bizhub 552 and bizhub 652 adhere to the bizhub OP concept, feature Konica Minolta's Universal Design, operation and feature set, and can be enhanced with extended applications and solutions.

- Their professional finishing versatility makes bizhub 552 and bizhub 652 ideal output devices for the creation of a wide variety of documents. Besides multi-position stapling of up to 100 sheets per set, their finishing capabilities include endless booklet production as well as various folding possibilities, 2- and 4-hole punching, and post insertion of preprinted covers and sheets, for example in colour.

→ Workflow options





Fast colour scanning for efficient document processing

→ B/w and colour scanning flexibility

bizhub 552/652 are perfect in- and output tools wherever a combination of productive colour scanning and fast b/w printing and copying is required. As highly efficient and versatile scanners for up to A3 size they handle the considerable input requirements of document-intensive environments with ease and eliminate the need for separate scan stations altogether.

Both bizhubs scan up to 78 hard originals per minute in colour as well as b/w. Their complete scanning functionality of scan to email (Home), FTP, SMB (Me), Box, USB, and TWAIN is standard; and with JPEG, TIFF, PDF, compact PDF, XPS and compact XPS, all relevant formats can be processed.

Applying OCR to scanned data allows creating searchable PDF documents. These provide a full-text search capability and allow convenient copying of text from the PDF into other documents and applications.

Same as the other innovative products in the bizhub portfolio, bizhub 552/652 feature bEST, Konica Minolta's bizhub Extended Solution Technology. bEST offers a gateway to extended document capturing and distribution capabilities that make these multifunctionals ideal input tools in high-volume environments. Thanks to bEST, the seamless connection to other applications as well as further processing is ensured.

→ Efficient capture and distribution

Document-intensive environments, e.g. logistics or order processing, depend upon efficient document capturing and distribution applications that fully

integrate paper-based and electronic information. The digitisation and indexing of incoming invoices with OCR and Zone OCR, the conversion to specific file formats like PDF/A, e.g. for verifiable archiving of documents that legally require safekeeping, and the direct document distribution to existing business applications are indispensable to these user groups.

Offering full panel integration of the related software, bizhub 552/652 are ideally suited to such tasks and do not require separate hardware. Document archiving processes can be started directly at the bizhub colour touch screen panel, inputting all required information like document type and additional index fields during the scan process so that the scans need no further treatment in the PC.

Beyond this, an extensive range of optional connectors provides access to almost any imaginable back-end application, including Document Management Systems, Enterprise Content Management Systems, Microsoft SharePoint, and more.

Thanks to their innovative technology paired with professional colour scanning capabilities, bizhub 552/652 integrate fully into any company's existing document management processes as easy-to-use document capturing solutions.

Key features	Key benefits
Fast scanning in colour and black & white	Flexibility and versatility from seamless integration into any workflow, colour or b/w
bEST – bizhub Extended Solution Technology	Easy customisation to close the gap to any user environment
Document capturing & distribution	Efficient integration of paper-based and electronic information for further processing, sharing, etc.
Embedded applications	Convenient operation via the bizhub display; no separate hardware (scan station, PC) required

→ Configurations



bizhub 552

bizhub 652



Competence in universal administration

➔ Complete cost transparency

An efficient accounting application organises the central collection of detailed counter readings of all registered devices plus the resulting cost calculation in just a single interface. The tool provides fast access to detailed cost information of departments and projects. Counters no longer need to be triggered individually, saving considerable administrator time and effort.

True to the motto “Think before you print,” this accounting tool helps optimise output volumes by increasing cost consciousness among users: Individual output limitations set by the administrator for each user reduce print volumes and output costs. Users’ volume limitations are reliably tracked across all networked output devices, making cost control even more effective.

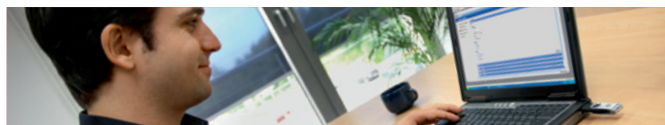
Detailed usage reports facilitate the optimisation of the output infrastructure on the basis of actual usage patterns. The welcome result and consequence are considerably enhanced overall efficiency and productivity.

➔ Reliable authentication

An efficient authentication tool makes the central management of user database and user rights simple and straightforward. Saving time and enjoying enhanced efficiency, administrators can quickly and easily program authentication details and set up output volume limitations that help reduce print volumes and output costs.

Users’ volume limitations are reliably tracked across all networked output devices, making cost control even more effective. Users benefit from enhanced flexibility and convenience with the immediate yet secure login via finger vein scanner or non-contact IC card.

Authentication is also the precondition for follow-me printing, which takes user convenience and security aspects one step further. Not only are follow-me printing workflows ideal for confidential printing anywhere; they also facilitate print fleet optimisation. Both pull printing and secure printing are available on every bEST OpenAPI-capable system in the network. Printed information is reliably safe as only the document owner can release prints directly at the device. This simple but effective method avoids wasting paper and helps reduce print volumes – output trays are no longer overflowing with redundant prints that might fall into the wrong hands.



➔ Enhanced administration

The PageScope Net Care Device Manager facilitates the central implementation of system network configurations and central status monitoring. Considerably reducing administrative efforts, this application provides fast access to and simple monitoring of individual or all devices on the network, helping to maximise the uptime of all monitored equipment. Streamlined status recalls and automatic email notifications ensure instant attention to problems and help avoid any bottlenecks in printing.

This maximises uptime, which in turn improves the productivity of all integrated systems and has a welcome positive impact on the overall office productivity.

➔ Automated service

CS Remote Care is Konica Minolta's proven remote monitoring system that ensures pro-active and highly flexible service support. All relevant system data are transmitted directly to the Konica Minolta service in an automated process that never needs user intervention. The direct transmission of any technical problem from the output device to the service organisation minimises downtime and helps to avoid time-consuming service calls.

Taking counter readings and relaying them to the Konica Minolta service is also a thing of the past. At the same time, CS Remote Care provides automated logistics, regularly checking consumables status and ordered stock. Manual reordering is no longer necessary; instead companies benefit from optimised work efficiency from the intelligent on-time delivery of consumables.



Key features	Key benefits
Comprehensive accounting	Efficient and centralised cost control with minimised administrator effort
Follow-me printing	Supports print fleet optimisation and secure printing; reduces wasted paper
Efficient administration	Time savings and enhanced productivity from central management of all networked devices
CS Remote Care	Smoothly running output devices; no sudden interruptions and maximised system availability



Important aspects for corporate interests

→ Complete compatibility

Like the other bizhub multifunctionals in the Konica Minolta portfolio, bizhub 552/652 feature proprietary Emperon™ controller technology that ensures their seamless integration into any standard network setup and makes them compatible with virtually any customer environment. With standard PCL, PostScript 3, PDF and XPS support, the Emperon provides maximum compatibility and is CITRIX ready; its Windows drivers are WHQL certified. At the same time, bizhub 552/652 are SAP certified, with Konica Minolta a Gold Partner in the SAP Printer Vendor Programme. Users benefit from simple and straightforward installation and assured reliability, as well as SAP customer support.

→ Media and finishing versatility

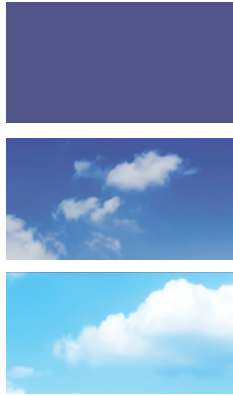
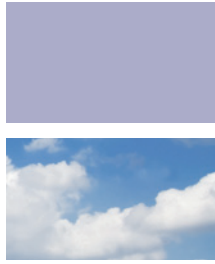
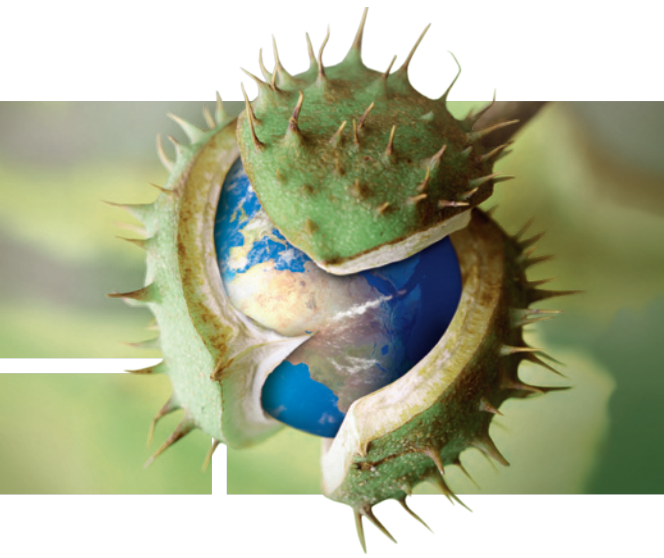
Media processing on the bizhub 552/652 is truly flexible: Their generous paper supply of up to 6,650 sheets is sufficient to complete even high-volume jobs without interruption. Paper sizes range from A6 to A3+, and paper qualities include thick paper of up to 300 gsm. Special media are processed without hitch, same as customised sizes, including banner printing on individual sheets of up to 1.2 metres length. Versatile finishing options boost the bizhub 552/652's powerful performance further: Their booklet finisher impresses with its endless booklet production and letter-fold functionality as well as automatic

stapling of up to 100 sheets and 2-/4-hole punching. As options, a post inserter for preprinted covers of up to 209 gsm and a z-fold unit for automatic folding to size of A3 pages enhance its capabilities.

The smaller alternative is a modular floor-type finisher that also offers attractive user flexibility. In addition to multi-position stapling of manuals, reports and other comprehensive documentation, it can be upgraded with punching, ideal for example for meeting minutes. This finisher's inline booklet feature produces centre-folded and saddle-stitched brochures and booklets of up to 80 pages.

→ Comprehensive security

bizhub 552/652 feature Konica Minolta's generous security standards and are certified to ISO 15408 EAL3. This official security certification represents international standards and underlines the superiority of the Konica Minolta security technologies. Both systems can be connected to secure networks with client authentication via IEEE 802.1x; offer safe network communication by encryption with the IPsec protocol; and protect hard disc data against unauthorised use with standard HDD encryption. Authentication via optional finger vein scanner or non-contact ID card reliably limits system access to authorised users and is more convenient than typing in user names and passwords.



→ Impressive eco-performance

bizhub 552/652 offer numerous energy conserving features and are Energy Star and German Blue Angel certified. They impress with very low TEC values that remain well below latest Energy Star regulations and underline their eco-friendly operation. Even with options such as a finisher installed, both products have extremely low energy consumption, which makes them not just environmentally sound but also means lower running costs.

One key factor for the eco-friendly operation is Konica Minolta's unique Simitri HD polymerised toner: With its lower fusing point it requires a shorter warm-up time and helps reduce energy consumption. Considering that the fusing process accounts for approximately 60% of the total power consumption, the usage of Simitri HD toner leads to savings of up to 20%. At the same time, Simitri HD polymerised toner is plant-based, its use of biomass and low-impact production process answering the demands of the modern, recycling-conscious society.

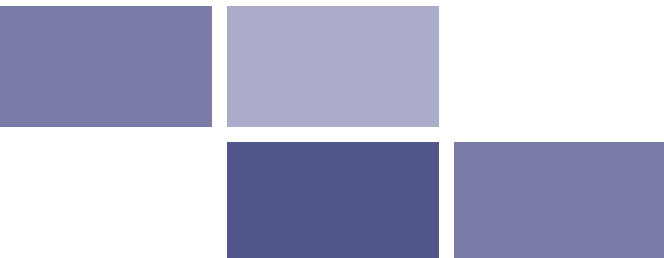
With low power and sleep mode, bizhub 552/652 offer two power saving modes to reduce energy consumption during idle phases. From both modes, the systems restart automatically as soon as a user operates a panel key or a print job comes in. Incoming faxes do not restart the machine but are stored in a secure memory until the device is activated by another process.

→ Minimised ecological impact

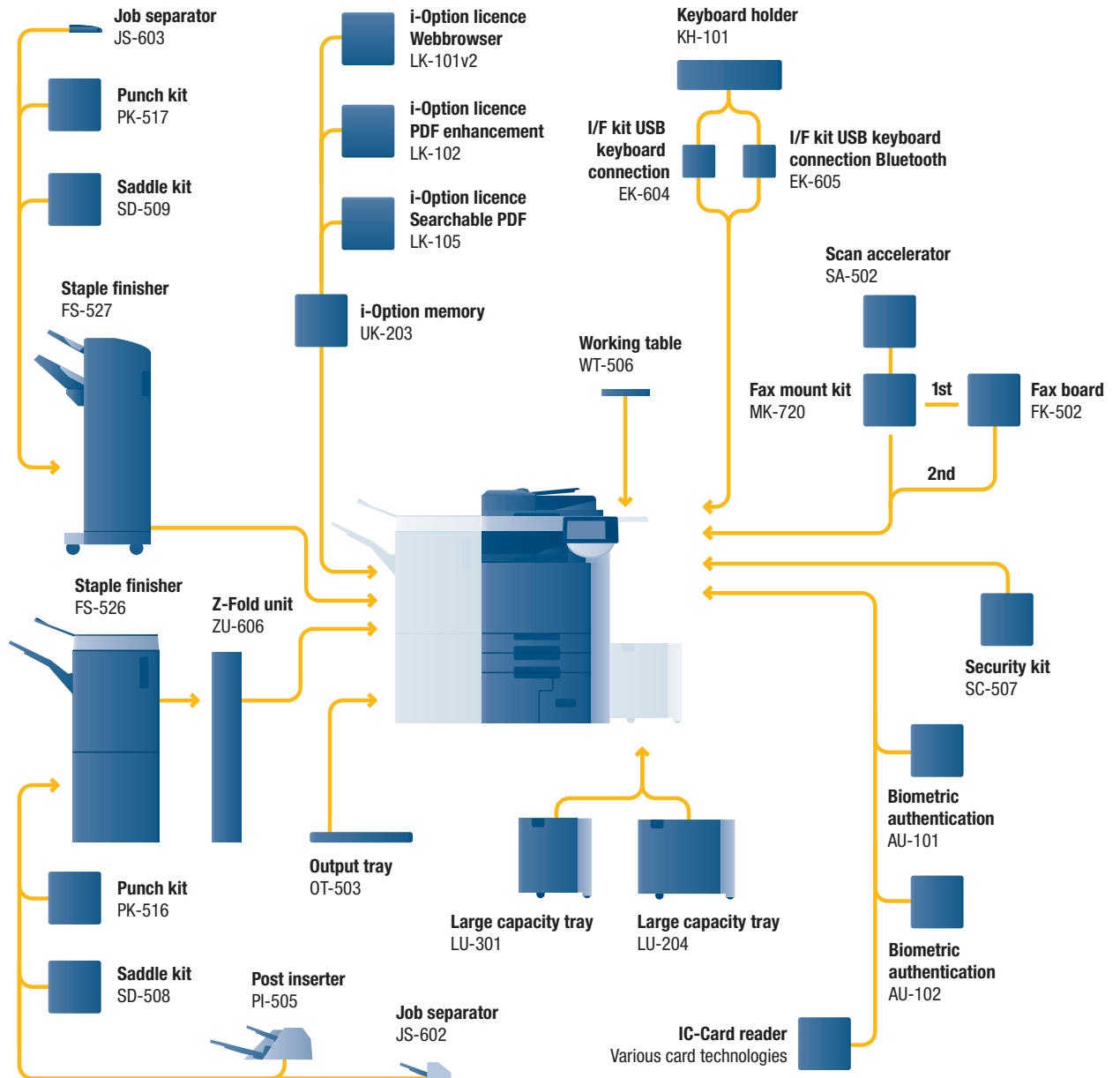
In compliance with its ISO 14001-based environmental management system, Konica Minolta promotes resource-friendly product development, including the use of recycled materials wherever possible, and a consumables design that enables the fast and simple separation into their component materials for easy recycling.

As part of its zero-waste manufacturing concept, Konica Minolta strives to minimise the ecological impact of its products with efficient environmental activities throughout all stages of the product lifecycle. As an example, reusable or recyclable packaging materials are used for hardware and consumables to minimise the waste generated by each device. Smaller packaging also helps reduce transport and storage costs. Lightweight components and packaging provide considerable CO2 reductions during transportation. Further activities include the promotion of energy-saving issues as well as comprehensive efforts for recycling and reuse – all in the interest of maximised environmental protection.

Key features	Key benefits
Emperon™ Controller Technology	Easy client and server installation and highest reliability thanks to seamless system integration and WHQL-certified drivers
ISO 15408 EAL3 certification	Certified security features protect corporate data
Extensive finishing capabilities	Attractive versatility for inline production of a wide range of professional print products
Ecologically sound build and performance	Facilitates eco-conscious purchasing and helps reduce running costs



➔ Option diagram bizhub 552/652



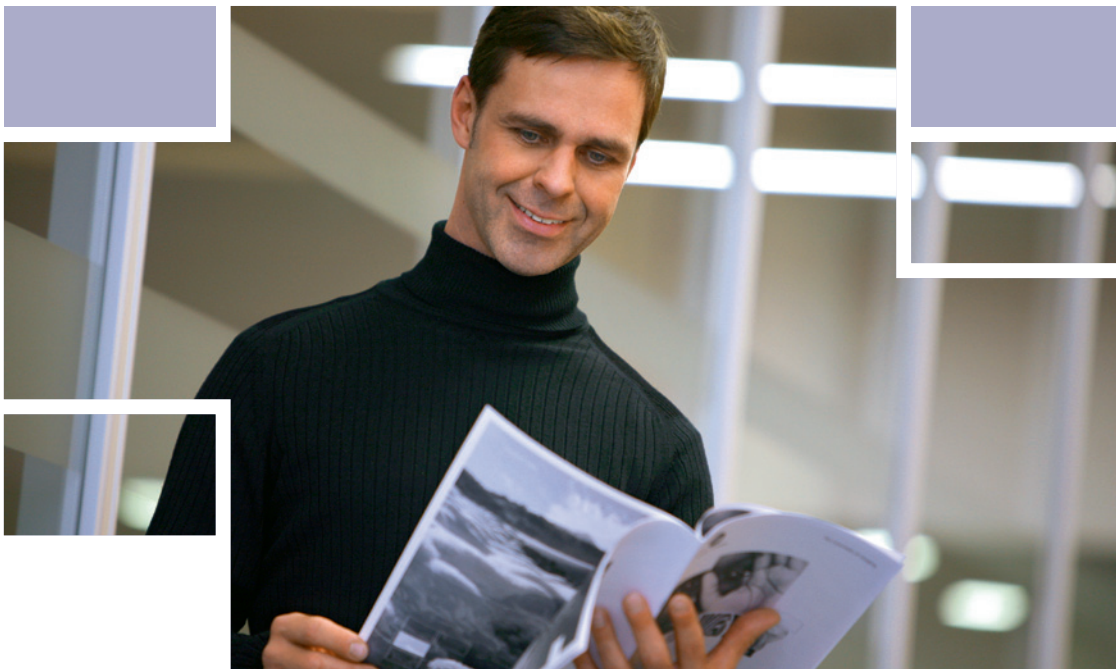
➔ Option descriptions bizhub 552/652

bizhub 552/652 Basic system

Communication centres with 55/65 ppm b/w. Standard Emperon™ print controller with PCL 6, PostScript 3, PDF 1.7 and XPS support. Paper capacity of 500 + 500 + 1,000 + 1,500 sheets and 150 sheets manual bypass. Media from A6 to A3+, 1.2 m banner and 64–300 gsm. 2 GB memory, 250 GB hard disc and Gigabit Ethernet standard.

FS-527 Staple finisher	50 sheet stapling, output capacity 3,200 sheets
PK-517 Punch kit	2 and 4 hole punching
SD-509 Saddle kit	Booklet finishing
JS-603 Job separator	Job separator e.g. for fax output
FS-526 Staple finisher*	100 sheet stapling, output capacity 3,100 sheets
PK-516 Punch kit*	2/4 hole punching
SD-508 Saddle kit*	Booklet finishing, letter-folding
JS-602 Job separator*	Job separator e.g. for fax output
PI-505 Post inserter*	Cover insertion, post finishing
ZU-606 Z-Fold unit*	Z-fold for A4 and A3
OT-503 Output tray	Output tray used instead of finisher
LU-301 Large capacity tray	A4, 3,000 sheets, 64–256 gsm

LU-204 Large capacity tray	A4–A3+, 2,500 sheets, 64–256 gsm
AU-101 Biometric authentication	Finger vein scanner
AU-102 Biometric authentication	Finger vein scanner
IC-Card reader	IC-Card reader for various card technologies
SC-507 Security kit	Copy Guard function
KH-101 Keyboard holder	To place the USB keyboard
EK-604 I/F kit	USB keyboard connection
EK-605 I/F kit	USB keyboard connection Bluetooth
MK-720 Fax mount kit	I/F board for fax FK-502
SA-502 Scan accelerator	Enhances scan file processing
FK-502 Fax board	Super G3 fax
WT-506 Working table	Authentication device placement
LK-101v2 i-Option licence	Webbrowser, Image panel
LK-102 i-Option licence	PDF enhancement
LK-105 i-Option licence	Searchable PDF
UK-203 i-Option memory	Memory extension for i-Option



➔ Finishing options bizhub 552/652



corner
stapling



2-point
stapling



two-hole
punching



four-hole
punching



duplex



combined
mixplex/mixmedia



sheet insertion,
report



letter fold



booklet



offset sorting



z-fold

➔ Technical specifications bizhub 552/652

■ Copier specifications

Copying process	Electrostatic laser copy Tandem indirect
Toner system	Simitri HD®- polymerised toner
Copy/print speed A4	Up to 55 cpm (bizhub 552) Up to 65 cpm (bizhub 652)
Copy/print speed A3	Up to 28 cpm (bizhub 552) Up to 33 cpm (bizhub 652)
Autoduplex speed A4	Up to 55 cpm (bizhub 552) Up to 65 cpm (bizhub 652)
1st copy/print time	4.3 sec. (bizhub 552) 3.8 sec. (bizhub 652)
Warm-up time	Approx. 30 sec. ¹
Copy resolution	600 x 600 dpi
Gradation	256 gradations
Multi-copy	1–9,999
Original format	A5–A3
Magnification	25–400% in 0.1% steps; Autozooming
Copy functions	Chapter Cover and page insertion Proof copy (print and screen) Adjustment test print Digital art functions Job setting memory Poster mode; Image repeat Overlay Stamping Copy protection

■ Printer specifications

Print resolution	Equivalent to 1,800 x 600 dpi
Controller CPU	MPC 8533 @ 1 GHz; 64 BIT
Page description language	PCL 6 (PCL 5 + XL3.0) PostScript 3 (CPSI 3017) XPS
Operating systems	Windows 2000 Windows XP Windows XP64 Windows VISTA 32 Windows VISTA 64 Windows 7 Windows 7 64 Windows Server 2000 Windows Server 2003/2003x64 Windows Server 2008/2008x64 Windows DPWS support Macintosh 9.x Macintosh 10.x Unix Linux Citrix
Printer fonts	80x PCL Latin 137x PostScript 3 Emulation Latin
Print functions	Direct print of PCL Direct print of PS Direct print of TIFF Direct print of XPS Direct print of PDF and Encrypted PDF files Mixmedia and mixplex Job programming "Easy Set" Overlay Watermark Copy Protection

■ Scanner specifications

Scan Speed	Up to 78/78 ipm
mono/colour	
Scan resolution	Max.: 600 x 600 dpi
Scan modes	Network TWAIN scan Scan-to-eMail (scan-to-Me) Scan-to-FTP Scan-to-SMB (scan-to-Home) Scan-to-Box Scan-to-WebDAV Scan-to-DPWS Scan-to-USB
File formats	JPEG TIFF PDF Compact PDF; Encrypted PDF Searchable PDF (optional) XPS; Compact XPS
Scan destinations	2,100 (single + group); LDAP support
Scan functions	Annotation (text/time/date) for PDF; up to 400 job programs

■ Fax specifications

Fax standard	Super G3 (optional)
Fax transmission	Analogue i-Fax Colour i-Fax (RFC3949-C) IP-Fax
Fax resolution	Max.: 600 x 600 dpi (ultra-fine)
Fax compression	MH; MR; MMR; JBIG
Fax modem	Up to 33.6 Kbps
Fax destinations	2,100 (single + group)
Fax functions	Polling; Time shift; PC-Fax; Receipt to confidential box; Receipt to eMail/FTP/SMB; up to 400 job programs

■ User box specification

Max. user boxes	1,000
Max. storable documents	Up to 3,000 documents or 10,000 pages
Type of user boxes	Public Personal (with password or authentication) Group (with authentication)
Type of system boxes	Secure print Encrypted PDF print Fax receiving Fax polling
User box functionality	Reprint; combination Download Sending (email/FTP/SMB and Fax) Copy box to box

■ System specifications

System memory	2,048 MB
System hard disc	250 GB
Interface	10-Base-T/100-Base-T/1,000-Base-T Ethernet; USB 2.0
Network protocols	TCP/IP (IPv4 / IPv6); IPX/SPX; NetBEUI; AppleTalk (EtherTalk); SMB; LPD; IPP; SNMP; HTTP
Frame types	Ethernet 802.2; Ethernet 802.3; Ethernet II; Ethernet SNAP
Automatic document feeder	Up to 100 originals; A6–A3; 35–210 gsm Reverse ADF
Printable paper size	A6–A3+; customised paper sizes Banner paper max. 1,200 x 297 mm
Printable paper weight	64–300 gsm
Paper input capacity	Standard: 3,650 sheets Max.: 6,650 sheets
Tray 1 + 2	500 sheets; A5–A3+; 64–256 gsm
Tray 3	1,500 sheets; A4; 64–256 gsm

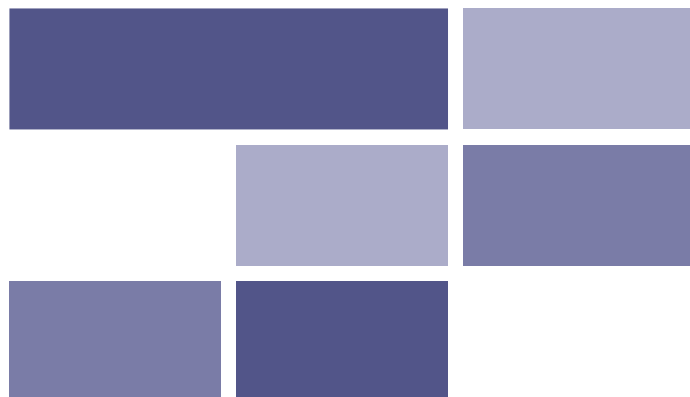
¹ Warm up time may vary depending on the operating environment and usage



Tray 4	1,000 sheets; A4; 64–256 gsm
Manual Bypass	150 sheets; A6–A3+; custom sizes; banner 64–300 gsm
Large Capacity Cabinet (optional)	3,000 sheets; A4; 64–256 gsm
Large Capacity Cabinet (optional)	2,500 sheets; A4–A3+; 64–256 gsm
Automatic duplexing	A5–A3+; 64–256 gsm
Finishing modes (optional)	Offset; group; sort; staple; punch; post insertion; z-fold; centre-fold; letter-fold; booklet
Output capacity (w. finisher)	Max.: 3,200 sheets
Output capacity (w/o finisher)	Max.: 250 sheets
Stapling	Max.: 100 sheets or 98 sheets + 2 cover sheets (up to 209 gsm)
Stapling output capacity	Max. 1,000 sheets
Letterfold	Up to 3 sheets
Letterfold capacity	20 sheets (tray); unlimited
Booklet	Max.: 20 sheets or 19 sheets + 1 cover sheet (up to 209 gsm)
Booklet output capacity	Max.: 100 sheets (tray); unlimited
Copy/print volume (monthly)	Rec.: 17,200; Max.: 150,000 (bizhub 552) Rec.: 25,600; Max.: 190,000 (bizhub 652)
Toner lifetime	Black 37,500
Imaging unit lifetime	Black 300,000/1,200,000 (Drum/Developer)
Power consumption	220–240 V / 50/60Hz Less than 2.0 KW (bizhub 552) Less than 2.1 KW (bizhub 652)
System dimensions (W x D x H, mm)	650 x 879 x 1155
System weight	Approx. 206 kg

■ System features

Security	ISO 15408 EAL3 (in evaluation) IP filtering and port blocking SSL2; SSL3 and TSL1.0 network communication IPsec support IEEE 802.1x support User authentication Authentication log; Secure Print Hard disc overwrite (8 standard types) Hard disc data encryption (AES 128) Memory data auto deletion Confidential fax receiving Print user data encryption Copy Protection (copy guard, password)
Accounting	Up to 1,000 user accounts Active Directory support (user name + password + email + smb folder) User function access definition Biometric authentication (finger vein) optional IC-Card authentication (IC-Card reader) optional
Software	PageScope Net Care Device Manager PageScope Data Administrator PageScope Box Operator PageScope Direct Print Print Status Notifier Driver Packaging Utility Log Management Utility





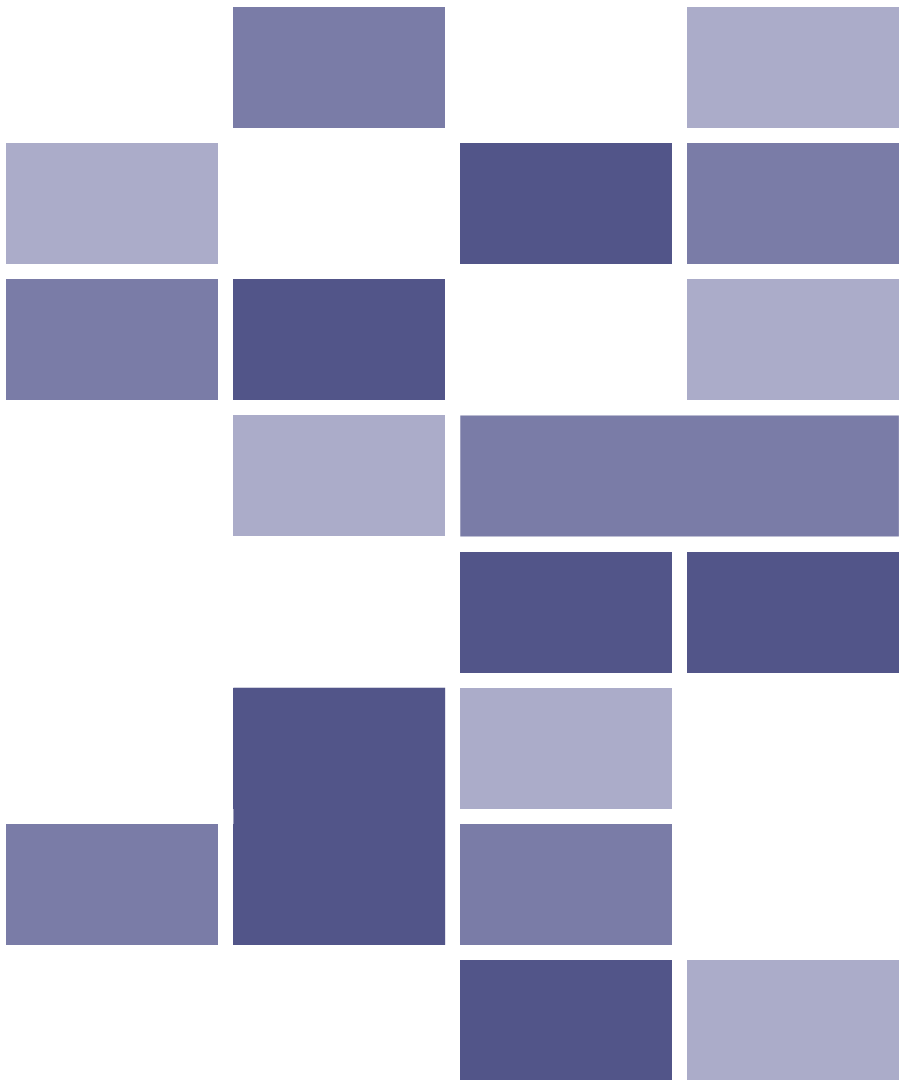
KONICA MINOLTA

Simitri HD

High Definition Polymerised Toner



SAP® Printer Vendor Solution



- All specifications relating to paper capacity refer to A4-size paper of 80 gsm quality
- All specifications relating to scanning, copying or printing speeds refer to A4-size paper that is scanned, copied or printed crosswise in multipage, simplex mode.
- The support and availability of the listed specifications and functionalities varies depending on operating systems, applications, network protocols as well as network and system configurations
- The stated life expectancy of each consumable is based on specific operating conditions such as page coverage for a particular page size (5 % coverage of A4). The actual consumables life will vary depending on the use and other printing variables including page coverage, page size, media type, continuous or intermittent printing, ambient temperature and humidity
- Some of the product illustrations contain optional accessories
- Specifications and accessories are based on the information available at the time of printing and are subject to change without notice
- Konica Minolta does not warrant that any prices or specifications mentioned will be error-free
- Microsoft, Windows and the Windows logo are trademarks, or registered trademarks, of Microsoft Corporation in the United States and/or other countries
- SAP and all SAP logos are trademarks or registered trademarks of SAP AG in Germany and in several other countries
- All other brand and product names may be registered trademarks or trademarks of their respective holders and are hereby acknowledged

Your Konica Minolta Business Solutions Partner:

Konica Minolta
Business Solutions Europe GmbH
 Europaallee 17
 30855 Langenhagen • Germany
 Tel.: +49 (0) 511 74 04-0
 Fax: +49 (0) 511 74 10 50
 www.konicaminolta.eu