

- Digital compression load cell, selfcentering column
- 1000 divisions OIML R60 class C
- Stainless Steel construction
- Hermetically welded, protection class IP 68 (EN 60529) and IP 69K (ISO 20653)
- Lightning protection
- Digital interface RS485 full duplex
- High speed of 200 readings/second
- Configuration and updatable software through serial interface
- Advantages in system setup, corner adjustment and individualized diagnosis
- Applications: High capacity weighing systems

- Digitale Schwerlastwägezelle, selbstzentrierend
- 1000 Teile OIML R60 Klasse C
- Ausführung in Edelstahl
- Hermetisch dicht verschweißt Schutzart IP 68 (EN 60529) und IP 69K (ISO 20653)
- Blitzschutz
- Digitales Interface RS-485 Fullduplex
- Hohe Messrate von 200 Messungen/s
- Systemeinstellungen und SW-Update über serielle Schnittstelle
- Vorteile bei der Inbetriebnahme, beim Eckenabgleich und durch individuelle Diagnose
- Applikationen: Schwerlastwaagen, Strassenfahrzeugwaagen

| Model<br>Modell | Nominal capacity<br>Nennlast<br>Ln | Accuracy class<br>Genauigkeitsklasse<br>n. OIML | Minimum division<br>Kleinster Teilungswert<br>vmin | Safe load limit<br>Grenzlast<br>150 % Ln | Breaking load<br>Bruchlast |
|-----------------|------------------------------------|---|--|--|----------------------------|
| 740D 100 t      | 100 t                              | 1000  | 15 kg  | 150 t                                    | 350 t                      |
| 740D 200 t      | 200 t                              | 1000  | 30 kg  | 300 t                                    | 450 t                      |
| 740D 400 t      | 400 t                              | 1000  | 60 kg  | 600 t                                    | 1200 t                     |
| 740D 600 t      | 600 t                              | 1000  | 90 kg  | 900 t                                    | 1800 t                     |

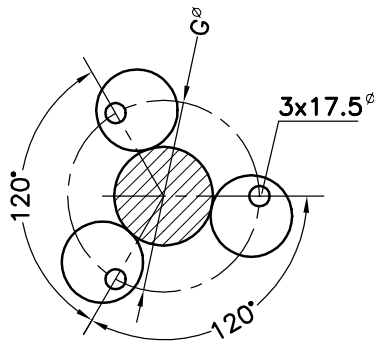
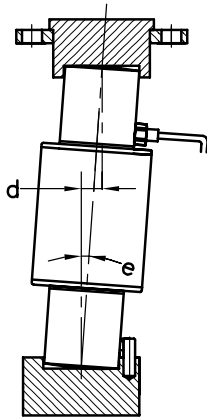


# MODEL 740D +

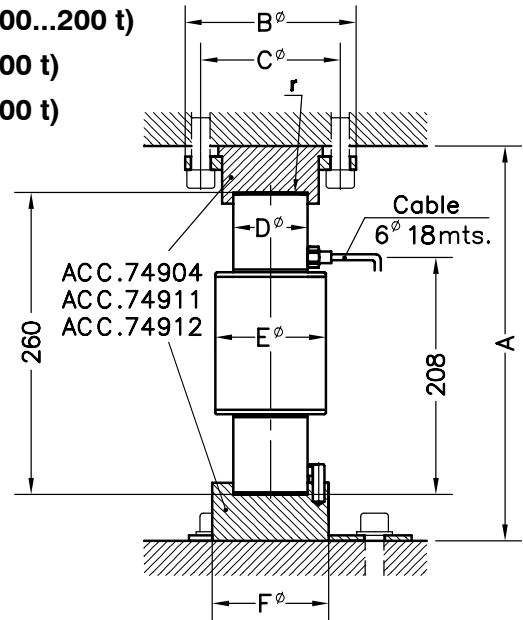
ACC. 74904 (100...200 t)

ACC. 74911 (400 t)

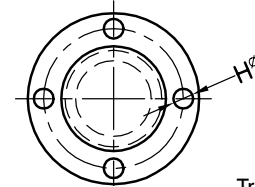
ACC. 74912 (600 t)



BOTTOM VIEW  
UNTERSICHT



TOP VIEW  
DRAUFSICHT



| Load cells<br>Wägezellen | A   | B   | C   | D   | E   | F   | G   | H   | d max. | e max.<br>Max. Neigung | Radius<br>Ball r | Transport<br>Weight<br>gewicht |
|--------------------------|-----|-----|-----|-----|-----|-----|-----|-----|--------|------------------------|------------------|--------------------------------|
| 740D 100 t               | 340 | 147 | 120 | 64  | 104 | 100 | 165 | 17  | 18     | 4°                     | 290              | 11 kg                          |
| 740D 200 t               | 340 | 147 | 120 | 64  | 104 | 100 | 165 | 17  | 9      | 2°                     | 400              | 11 kg                          |
| 740D 400 t               | 400 | 220 | 190 | 109 | 140 | 160 | 200 | 21  | 8      | 1.4°                   | 700              | 23 kg                          |
| 740D 600 t               | 400 | 220 | 190 | 118 | 169 | 160 | 200 | 21  | 8      | 1.4°                   | 800              | 27 kg                          |
| Acc. 74904               | --- | --- | --- | --- | --- | --- | --- | --- | ---    | ---                    | ---              | 7 kg                           |
| Acc. 74911               | --- | --- | --- | --- | --- | --- | --- | --- | ---    | ---                    | ---              | 27 kg                          |
| Acc. 74912               | --- | --- | --- | --- | --- | --- | --- | --- | ---    | ---                    | ---              | 36 kg                          |

Dimensions in mm.  
Abmessungen in mm.

Transport Weight  
gewicht

| SPECIFICATIONS                                 |                             |            | TECHNISCHE DATEN               |
|--|-----------------------------|------------|--------------------------------|
| Nominal capacities (Ln)                        | 100-200-<br>400-600         | t          | Nennlasten (Ln)                |
| Accuracy class                                 | 1000                        | n. OIML    | Genauigkeitsklasse             |
| Minimum dead load                              | 0                           | %Ln        | Minimale Vorlast               |
| Service load                                   | 120                         | %Ln        | Gebrauchslast                  |
| Safe load limit                                | 150                         | %Ln        | Grenzlast                      |
| Total error                                    | < ±0.05                     | %Sn        | Zusammengesetzter Fehler       |
| Repeatability error                            | < ±0.01                     | %Sn        | Wiederholgenauigkeit           |
| Temperature effect:<br>on zero                 | < ±0.01                     | %Sn/5 °C   | Temperaturfehler:<br>Nullpunkt |
| on sensitivity                                 | < ±0.018                    | %Sn/5 °C   | Kennwert                       |
| Creep error (30 minutes)                       | < ±0.048                    | %Sn        | Kriechfehler (30 min)          |
| Temperature compensation                       | -10...+40                   | °C         | Nenntemperaturbereich          |
| Temperature limits                             | -30...+70                   | °C         | Arbeitstemperaturbereich       |
| Nominal sensitivity (Sn)                       | 200000±0.05%                | counts (1) | Nennkennwert (Cn)              |
| No load output                                 | ±0.1                        | %Sn        | Nullsignaltoleranz             |
| Power supply                                   | 8...18                      | V DC       | Stromversorgung                |
| Supply current                                 | 60                          | mA (max.)  | Stromaufnahme                  |
| Conversion speed                               | 200                         | Hz         | Messrate                       |
| RS-485 Serial interface                        | Fullduplex<br>4800...115200 | Baud       | RS-485 Serial interface        |
| Max. transmission cable length                 | 1200                        | m          | Max. Kabellänge                |
| Maximum deflection (at Ln)                     | 1.2-2.6                     | mm         | Nennmessweg (bei Ln)           |
| (1) User programmable / Benutzerprogrammierbar |                             |            |                                |

ELECTRICAL CONNECTION  
ELEKTRISCHER ANSCHLUSS:

LOAD CELL  
WÄGEZELLEN

