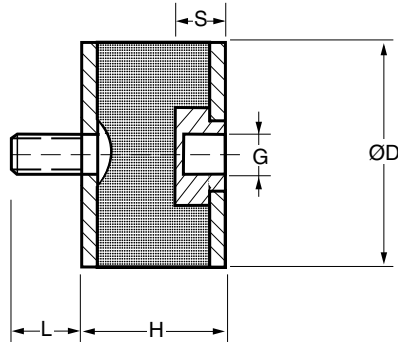


● Bobbins



Cylindrical mountings type B

Type	D/H	GxL (S)	Part no. 60° IRH	60° IRH Compression load		Shear load	
				k_{comp} (N/mm)	F_{max} (N)	k_{shear} (N/mm)	F_{max} (N)
B	10/10	M4x10(4)	20-00569-01	60	55	10	25
B	10/15	M4x10(4)	20-01063-01	35	50	5	25
B	15/15	M4x10(4)	20-01073-01	80	125	15	50
B	20/15	M6x15(6)	20-00570-01	160	240	25	90
B	20/20	M6x15(6)	20-00571-01	105	220	20	90
B	20/25	M6x15(6)	20-00460-01	80	215	15	90
B	25/15	M6x15(6)	20-00572-01	270	405	40	145
B	25/20	M6x15(6)	20-00461-01	170	360	25	145
B	25/25	M6x15 (6)	20-00462-01	125	340	20	145
B	25/30	M6x15(6)	20-00463-01	100	335	15	145
B	30/15	M8x20(8)	20-01074-01	495	675	60	210
B	30/20	M8x20 (8)	20-00574-01	285	560	40	210
B	30/25	M8x20(8)	20-00464-01	200	515	30	210
B	30/30	M8x20 (8)	20-00575-01	155	495	25	210
B	30/40	M8x20(8)	20-00465-01	110	475	20	210
B	40/30	M8x20(8)	20-00466-01	295	935	45	370
B	40/40	M8x20(8)	20-00467-01	200	875	35	370
B	50/30	M10x25(10)	20-00468-01	515	1595	75	580
B	50/40	M10x25 (10)	20-00469-01	335	1435	55	580
B	50/50	M10x25 (10)	20-00579-01	250	1365	40	580
B	75/50	M12x35(12)	20-00470-01	630	3400	95	1300
B	75/55	M12x35 (12)	20-00471-01	550	3290	85	1300
B	100/40	M16x45 (16)	20-00472-01	1915	7995	220	2310
B	100/55	M16x45(16)	20-00473-01	1085	6480	155	2310

S = internal thread length