



MOTOTRBO™ Features & Benefits

The Professional Digital Conventional Two-Way Radio System

MOTOROLA and the Stylized M Logo are registered in the US Patent & Trademark Office.
All other product or service names are the property of their respective owners. © Motorola, Inc. 2007

MOTOTRBO™

Professional Digital Two-Way Radio System

MOTOTRBO is Motorola's first digital two-way radio system designed for professional organizations needing a customizable, business-critical solution using licensed spectrum.

Radios and Repeater



Increased Channel Capacity

Clear and Secured Voice Communications

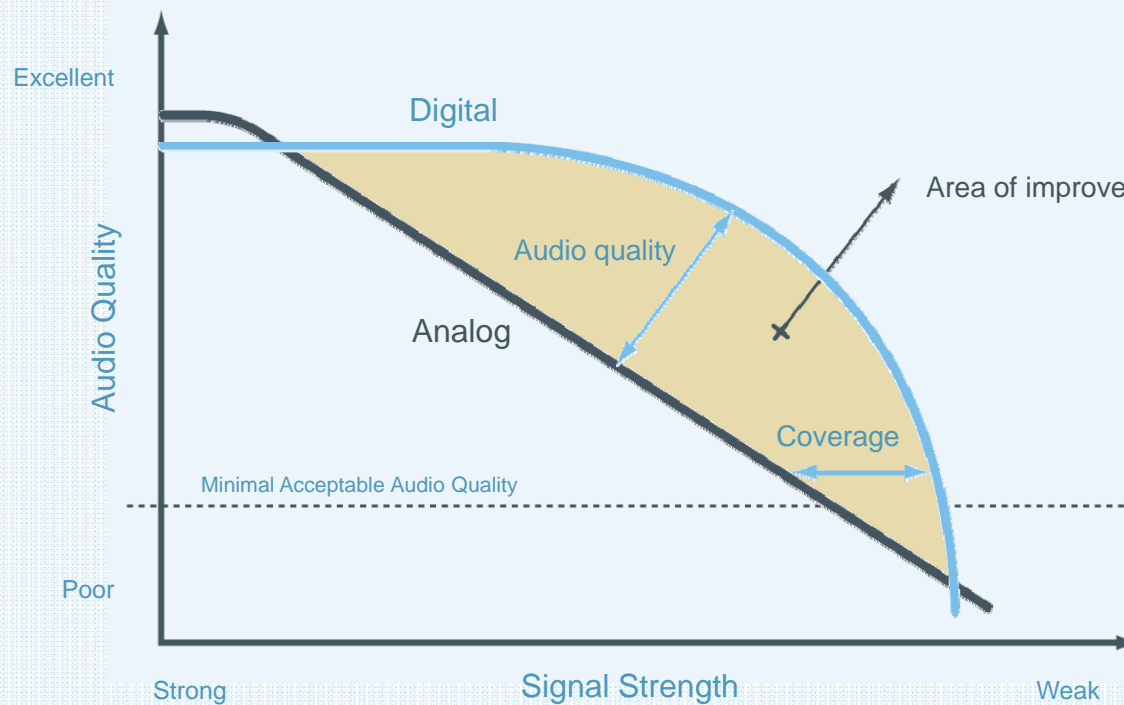
Extended Voice Coverage

Enhanced Battery Life

Integrated Voice and Data

Graceful Migration

Better Basics – Greater Usable Range

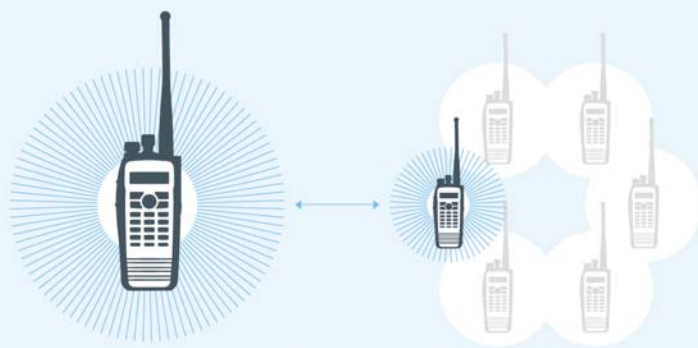


Click to play:

-  Analog Radio
-  Digital Radio

Enhanced Features – Digital Calling and Signaling

Enhanced Call and Channel Management to Increase Productivity



One-to-One
Call and talk privately with a specific user's radio



One-to-Many
Enables communication with specific sets of group members



One-to-All
Allows all on the same channel to hear communications

Comprehensive Digital Call Feature-set

Feature	Benefit
Group Call	Helps ensure critical work groups are fully informed – maximise workforce efficiency and safety
Individual Call	Allows calls to be directed at individuals – provides discreet communications while minimising disruption to others
All Call	Ensures entire radio fleet is instantly provided with critical information
Radio Disable	Allows stolen/lost radios to be disabled over the air – maintaining integrity of communication system
Remote Monitor	Enables supervisor radios to listen in on remote radios to maximise employee safety and instantly assess situation
Radio Check	Provides means of checking whether radios are active on system without disturbing user.
Call Alert	Enables a user to page another and request a return call when convenient
PTT ID	Allows the receiving party to instantly identify the caller and respond accordingly – improves communication efficiency and instils user discipline
Emergency Call options	A variety of emergency calls can be confirmed to maximise employee safety and accelerate incident response times
Polite and impolite Call Setup	Provides flexible communication scheme to meet specific customer working environment
Sophisticated scanning	A variety of sophisticated scanning procedures helps ensure all relevant calls are heard – maximising communications efficiency

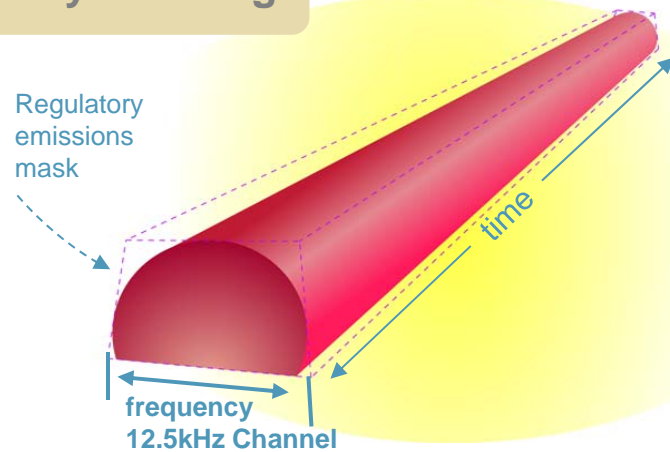
2:1 TDMA Digital Technology



- **Permits two simultaneous conversations with a single repeater**
- **Longer Talk time**
- **Supports both voice and data**
- **Fits seamlessly into existing licensed channels**
- **European Telecommunications Standards Institute (ETSI) standards based**

TDMA - Increased System Capacity with repeater

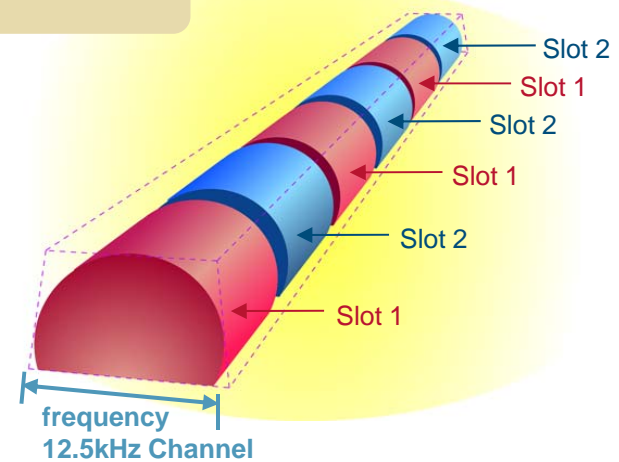
Today's Analog



12.5kHz / 25 kHz

- 1 voice for each 12.5/ 25kHz channel
- 1 repeater for each channel

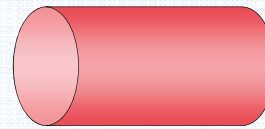
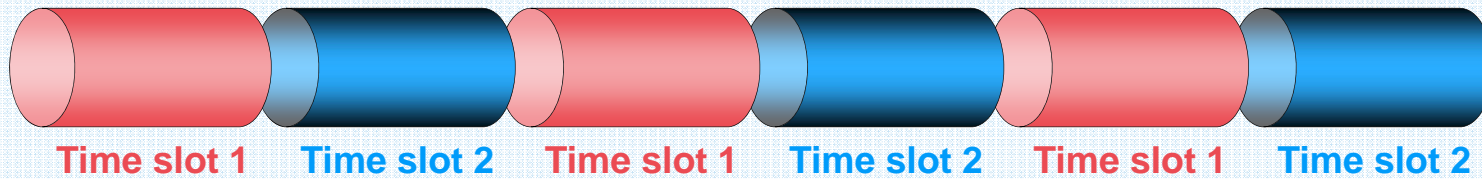
MOTOTRBO



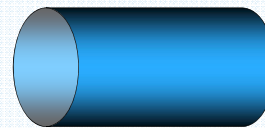
12.5kHz TDMA

- Divides existing channel into two timeslots
- Delivers twice the capacity through repeater
- Performance is same or better than 12.5kHz FDMA
 - 1 repeater does work of 2
- Reduced need for combining equipment
- Enables 40% increase in radio battery life

TDMA Advantage: Double Channel Capacity with repeater



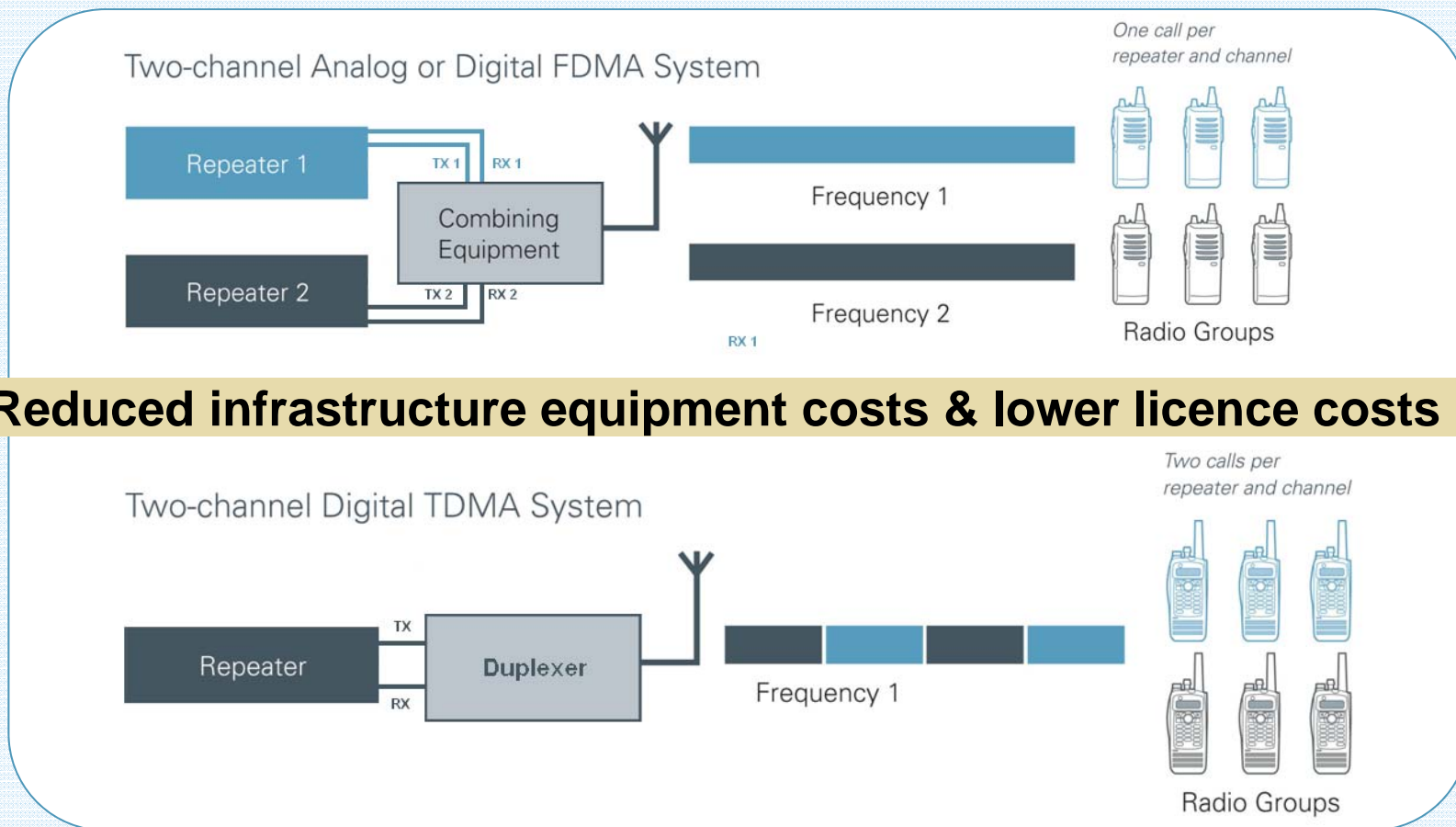
Voice Call 1



Voice Call 2



TDMA Advantage: Cost-effective spectrum use



Better Basics – Enhanced Functionality

Longer Talk Time

- Longer talk time – 40% more than analog
 - Typical Analog Portable radio's battery performance: 8 hrs @ 5/5/90 with 1300 mAH battery
 - Standard MOTOTRBO Portable package uses IMPRES 1500 mAH battery to provide 13hrs @ 5/5/90
 - Optional Higher capacity IMPRES 2200 mAH battery to provide 19hrs @ 5/5/90

Better Design

- Smaller, lightweight, rugged product design
- Certified to ensure durability
- Intuitive, easy-to-use, menu-driven interface
- Meets IP57 specifications (portable only)



Better Basic- Built-in Digital Privacy

Digital privacy:

- Digital offers inherent protection against casual eavesdropping using scanners, etc.
- Analog radio is not able to listen to MOTOTRBO digital calls
- In order for another MOTOTRBO radio to listen to a digital call
 1. Channel Frequency
 2. Color Code (System ID) – 1 of 16
 3. Time slot - 1 of 2
 4. Group ID – 1 of 16 million
 5. CPS password protection

Safer & more competitive workforce

Better Basic- Enhanced Privacy Mode

Enhanced Voice Privacy:

- Enhanced Privacy uses an advanced algorithm to transform voice/data into secured voice/data.
- Enhanced Privacy:
 - store 16 different keys in the radio
 - 40 bits per key
 - 1 Trillion possible combinations (1,099,511,627,776)

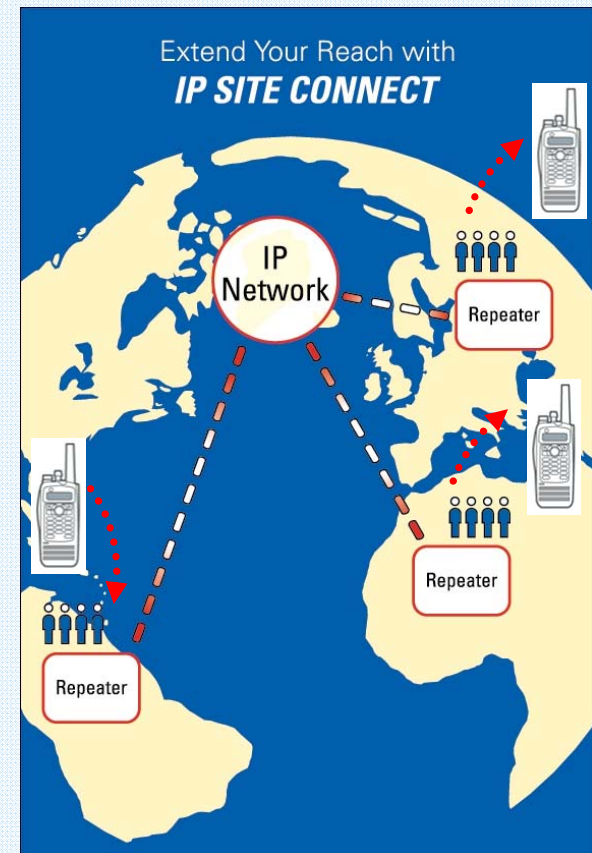


Secured & protected workforce

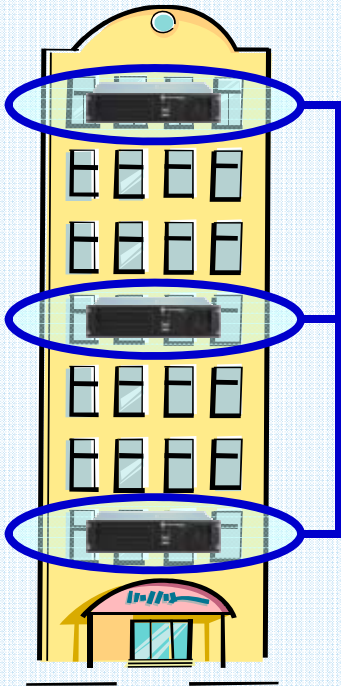
IP Site Connect- Extended voice communication

IP Site Connect :

- Connect up to 15 repeaters (via IP network) for extended Day-to-day voice and data communication
- Connecting repeaters operating in different RF bands.
- Provide automatic roaming from one coverage area to another with no manual intervention or interruption



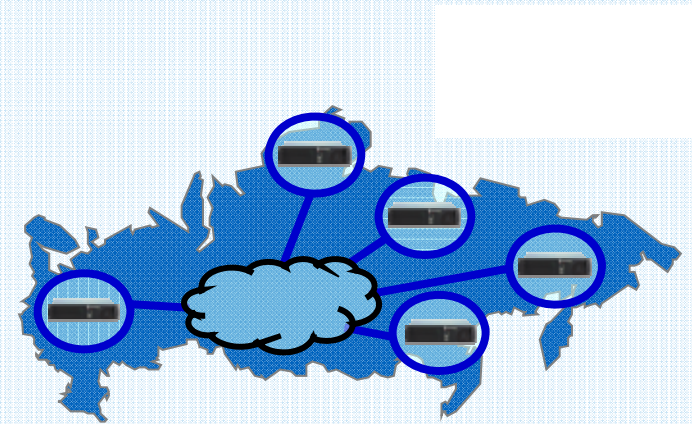
Extending *coverage* to 15 sites



Single Location



Large Campus



Dispersed Sites

IP Site Connect- RDAC (Repeater Diagnostic Alarm & Control)

5 Alarms

- TX Lock Detect Failure
- RX Lock Detect Failure
- Overheating
- Main Fan Failure
- AC Power supply Failure

2 Diagnostics

- RSSI
- TX Power Level (High or Low)

RDAC via GPIO, USB or IP

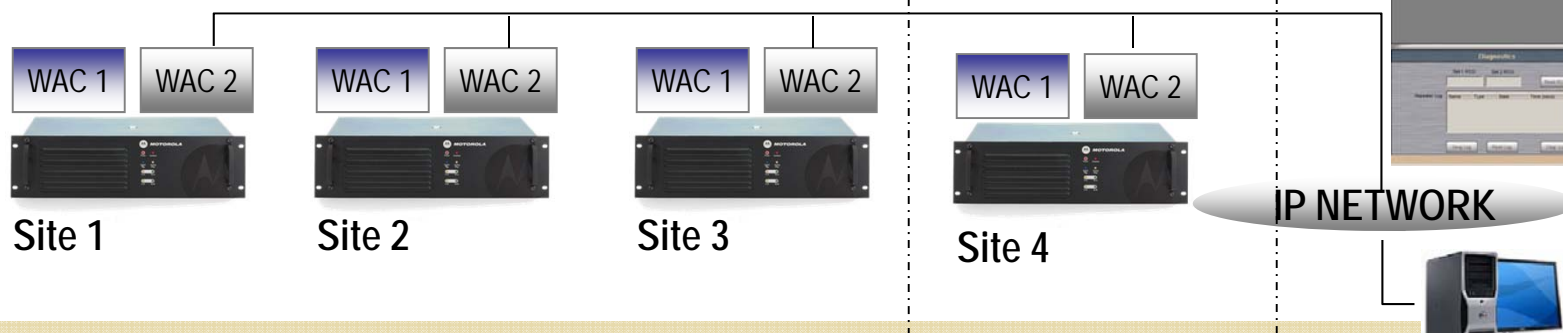
4 Controls

- Channel steering
- Repeat Enable/Disable (Standby),
- Soft Reset,
- TX Power Level Change (High/Low)

Application

- Remote Control of Analog /Digital Repeater switching
- Remote Coverage change (High/Low power)
- Remote control standby repeater (redundancy)
- Redundant Repeater Setup

10.xx.xx.123



CAPACITY PLUS



Expanding *capacity* to 1,200 users on a single site

- Single-site trunking solution
- Digital voice & data communications
 - Up to 12 voice/data channels
 - Plus up to 24 dedicated data channels
- Software upgrade to existing hardware
 - Online software licence process

Capacity Plus- Single site with extended voice capacity

Capacity Plus :

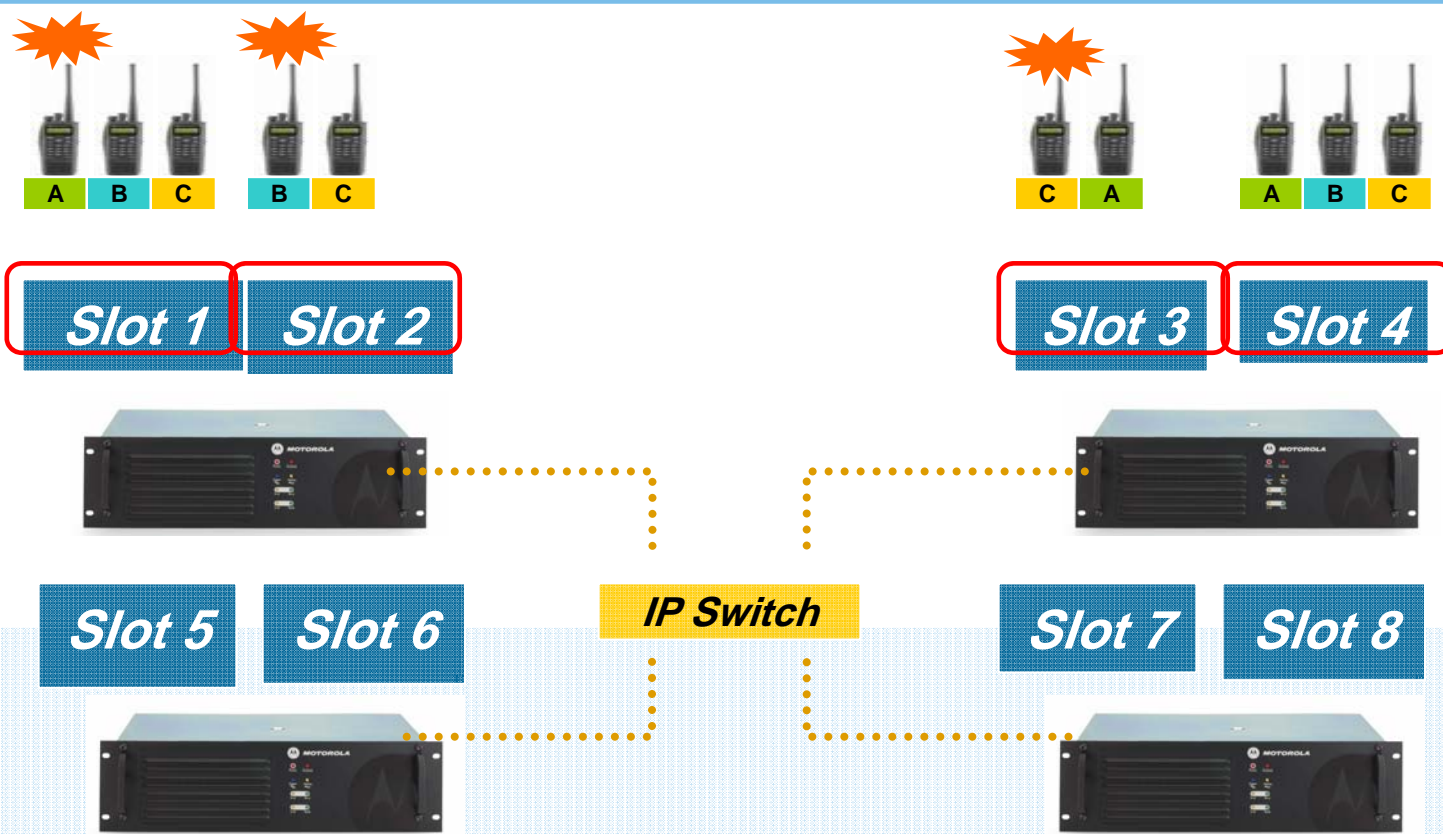
Connect up to 4 repeaters in a SINGLE SITE for extended voice communication

Connect up to 8 repeaters in a SINGLE SITE for extended data communication



Fully Loaded: 8 voice slots plus 16 data revert slots plus Applications to maximize system capacity and performance

CAPACITY PLUS



- Quick call set-up – intelligence in repeater
- Optimal channel efficiency – no dedicated control channel
- Can be deployed on shared channels

LINKED CAPACITY PLUS

Available Q1 2012



Trunked multi-site, multi-channel configuration

- Adds **CAPACITY** to existing IP Site Connect (IPSC) systems
- Adds **COVERAGE** to existing Capacity Plus (Cap+) systems

Requires only radios and repeaters software upgrade

- No central controller needed

Compatible with all MOTOTRBO radios

LINKED CAPACITY PLUS



Supports up to 15 sites

- Up to 6 trunked (voice) & 5 data revert repeaters per site
- Not necessary to have same number of repeaters per site

Individual calls

- Only two sites active

Up to 254 local and wide-area talkgroups

- Local talkgroup calls set up on local site only
- A wide-area talkgroup may be assigned to specific sites

Two types of data revert channels

- Enhanced GPS
 - Normal Data Revert
- } Single-site and multi-site

MPT1327 OPTION BOARD

Available Q4 2011



Plug-in option board

- Available as an aftermarket accessory
- Supported by all current MOTOTRBO radios

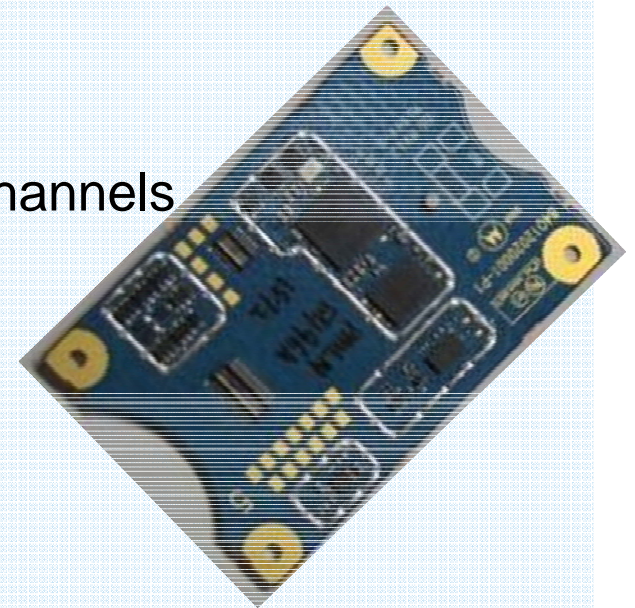
Majority of Professional Series MPT1327 features

Plus additional features

- Including TPL Encode / Decode on traffic channels

MPT1327 option board CPS

- Configures MPT1327 personality
- Connects to radio via standard USB cable



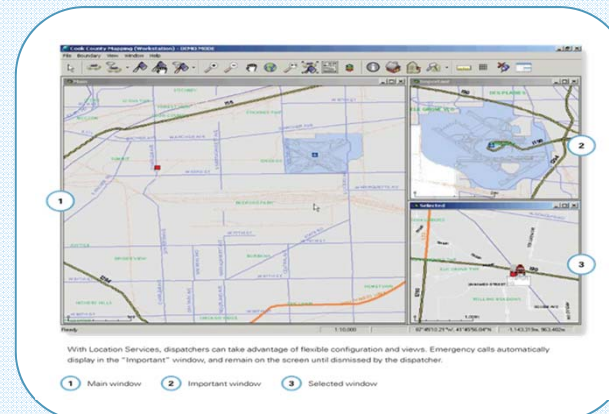
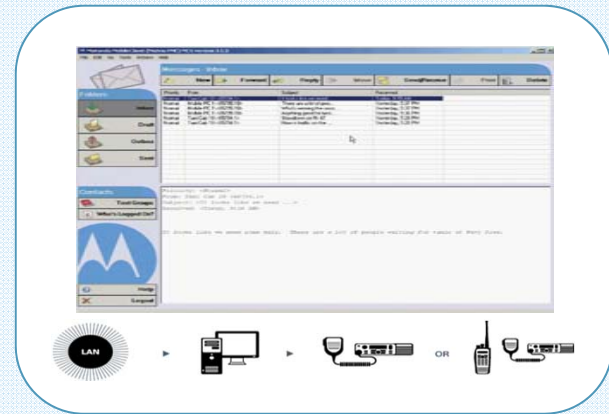
Enables Data Applications

Text Messaging

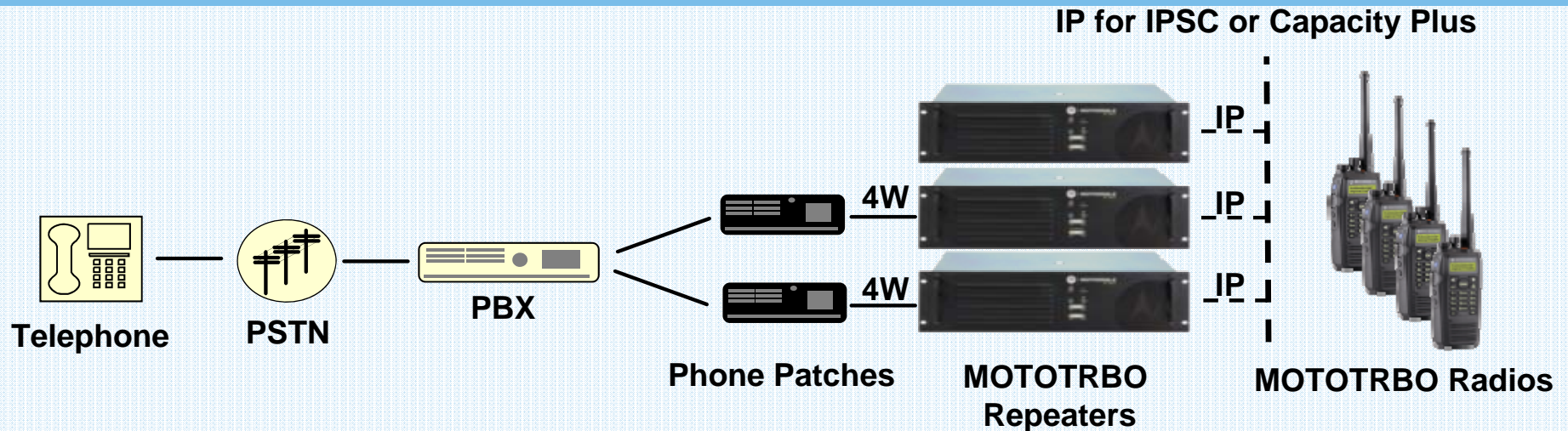
- Ability to Send/receive messages to selected group of radios, an individual radio, fixed or mobile

Outdoor Location Tracking

- Ability to Monitor the location using the embedded GPS capability in the radios. More efficiently manage mobile workforce, optimize schedules, route planning, and dispatching



TELEPHONE INTERCONNECT



- Utilises existing 3rd-party analogue phone patch devices
- Telephone-to-Talkgroup, Telephone-to-Radio and Radio-to-Telephone calls
- Single-site repeater, IP Site Connect and Capacity Plus configurations

Easy Migration

- MOTOTRBO allows migration to take place one radio at a time, one channel at a time or the entire system at a time
- MOTOTRBO system is dual-mode analog-digital
- MOTOTRBO radios are able to scan both analog and digital channels





MOTOTRBOTM

TRUSTED BY

1,000,000

USERS

Professional Digital Two-Way Radio System

DEPLOYMENTS



Emergency Services



Government



Utilities



Manufacturing



Airports



Oil Production



Retail



Warehousing/Logistics



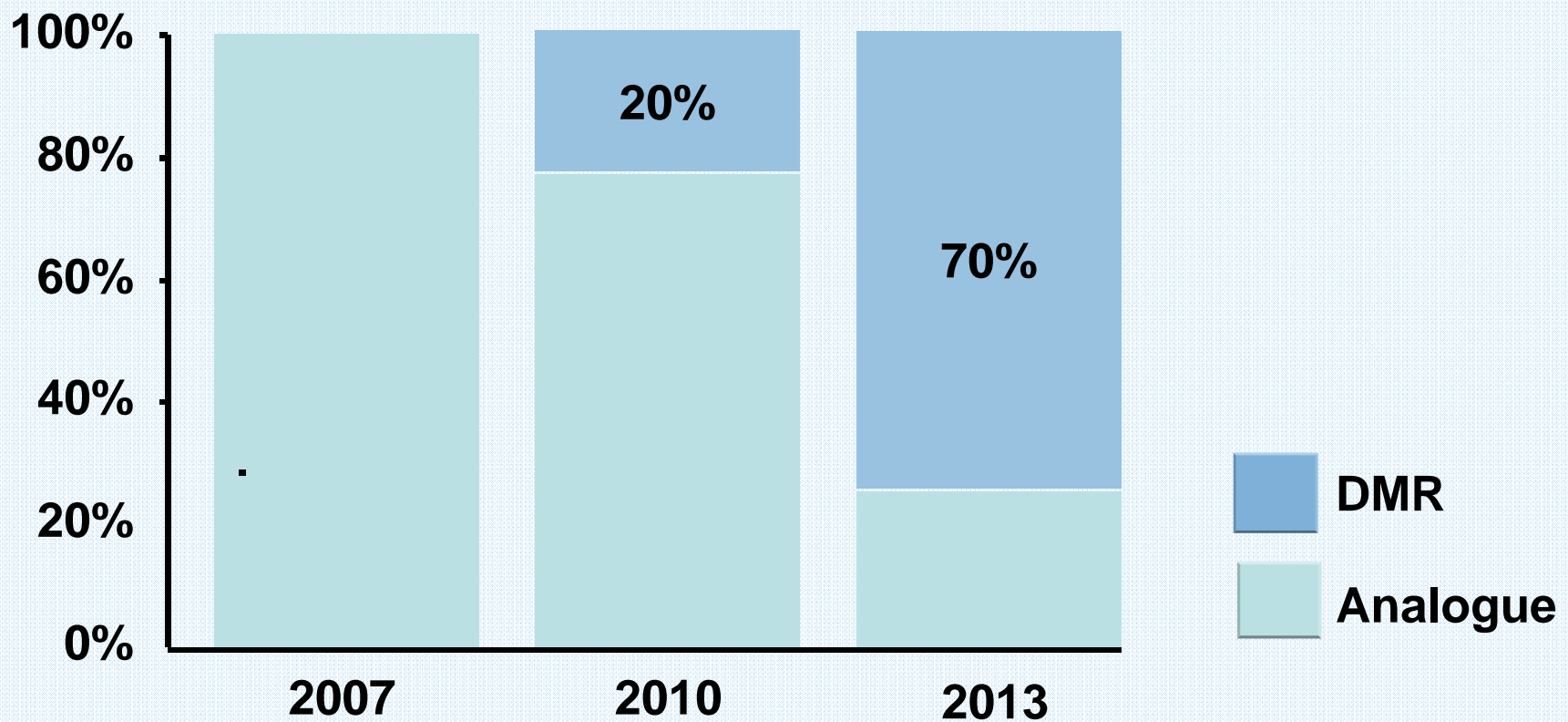
Tourism/Events



RAPID DIGITISATION



Professional radio market, EMEA (\$)



DIVERSE APPLICATIONS



Currently over 200 active MOTOTRBO Application partners

Analogue Migration

K-TERM 42



5-tone option board

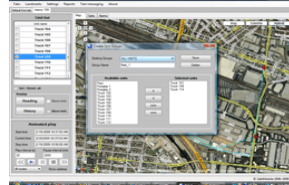
Dispatcher

TRBOnet



PC-based dispatch client

SafeDispatch



Tracking & managing mobile resources

AVL & Emergency

TRX PRO



GPS location & Google Earth mapping

DMR Alert



Indoor & outdoor location monitoring

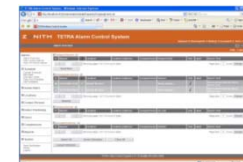
Telemetry & Data

DMR921



USB to RS232 serial interface converter

Zonith ACS



Automated alarm management

MOTOTRBO Display Portable Radio Features



7 XiR P8260
XiR P8268 (GPS)

1. 1000 channels
2. Flexible, menu-driven interface with user-friendly icons
3. Tri-color LED indicator
4. Emergency button
5. New accessory connector
6. DP3601 with integrated GPS module
7. Large, easy-to-use navigation buttons
8. IP57 submersible.
9. Powerful, front projecting speaker
10. Three side and two front programmable buttons
11. Large, textured push-to-talk button

Note: DP3600 is not upgradeable to GPS

MOTOTRBO Non-display Portable Radio Features



XiR P8200
XiR P8208 (GPS)

1. 32 channels
2. Tri-color LED indicator
3. Emergency button
4. New accessory connector
5. DP3400 with integrated GPS module
6. Large, easy-to-use navigation buttons
7. IP57 submersible.
8. Powerful, front projecting speaker
9. Three side and two front programmable buttons
10. Large, textured push-to-talk button.

MOTOTRBO Display Mobile Radio Features



XiR M8260
XiR M8268 (GPS)

1. Rugged durable accessory connector
2. Multi-colored LED indicators
3. Large, easy-to-use volume knob.
4. DM3601 with integrated GPS module
5. 1000 channels.
6. Powerful, front-projecting speaker
7. Large, easy-to-use navigation buttons
8. Flexible, menu-driven interface with user-friendly icons
9. Four programmable buttons
10. Compact and ergonomically friendly speaker microphone.

Note: DM3600 is not upgradeable to GPS

MOTOTRBO Numeric Display Mobile Radio Features



1. Rugged durable accessory connector
2. Multi-colored LED indicators
3. Large, easy-to-use volume knob.
4. DM3401 with integrated GPS module
5. Large, easy-to-use navigation buttons
6. Powerful, front-projecting speaker
7. 32 channels
8. Two programmable buttons
9. Compact and ergonomically friendly speaker microphone.

XiR M8220
XiR M8228 (GPS)

MOTOTRBO Repeater Features



1. 16 channels
2. 100% continuous duty cycle at Maximum Tx Power (40W UHF, 45W VHF)
3. Two simultaneous voice or data paths
4. Integrated power supply.
5. Operates in analog or digital mode
6. LEDs clearly indicate transmit and receive modes
7. Rack- or wall-mountable
8. Sturdy handles make installation and handling easier.
9. Automated battery back up

WIRELESS ACCESSORIES



Wireless Adapter



Wireless PTT



Wireless Earpiece



Off-the-shelf Bluetooth headsets

IMPRES™ Smart Energy System

- No manual battery maintenance
- Optimized cycle life
- Multi-unit chargers that communicate
- Chargers compatible with non-IMPRES batteries
- Extended battery warranties
- IMPRES 1500 mAH Li-ion battery and single unit charger ship with standard package (13 hrs @ 5/5/90)
- Optional Higher capacity IMPRES 2200mAH Li-ion battery for longer talk time (19hrs @ 5/5/90)
- IMPRES FM 1400 mAH Li-ion battery available



IMPRES™ Smart Audio Accessories

- Offer enhanced performance and capabilities
- Radio-accessory communication enables adaptive and superior audio performance
- Create consistent audio levels across different accessory types
- Programmable buttons allow customization to improve productivity
- Increased volume level due to a more linear frequency response & increased audio gain capability



New Audio Accessory Connector

- Accessory programmable buttons available for feature programming
- Enables enhanced performance and capabilities
- Meets IP57 submersibility standards (portable models only)
- Incorporates antenna signal within audio connectors for easy use of RF signal accessories
- Incorporates USB capability
- Motorola standard audio accessory interface
- Enhanced audio functionality resulting in more consistent output across audio accessory types



MOTOTRBO Accessories

Audio

Variety of audio accessories for enhanced radio experience

Batteries

Offer superior and long-lasting performance with IMPRES batteries

Chargers

Provides adaptive, automatic reconditioning for IMPRES batteries to maximize talk time and cycle life

Carry Devices

Provides equipment protection and convenient usage

Mobile Accessories

Advance microphones, remote mount kits and accessories to enhance the mobile radio



Ideal for Manufacturing



- Effective in noisy environments due to noise canceling technology.
- Easy migration permits easy addition of radios to system resulting from staffing changes.
- Text messaging and location services technology helps communicate with staff located in expansive facilities.
- Emergency signaling addresses safety and security concerns.

THANK YOU...

