

RUPES®




Big Foot®

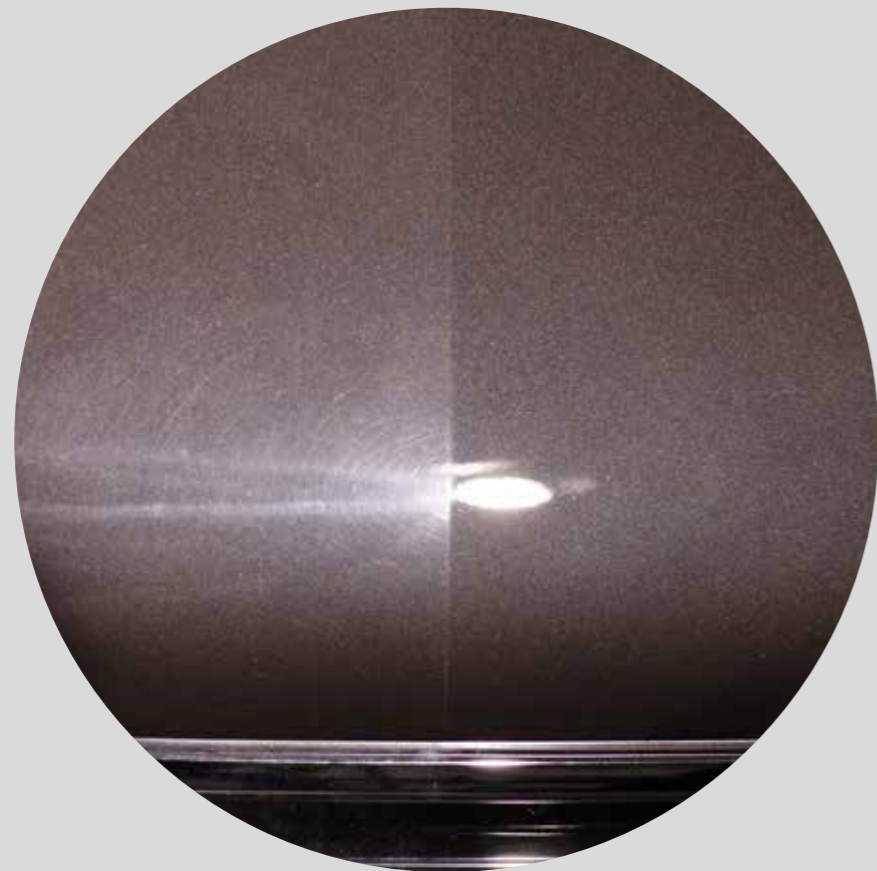
RANDOM ORBITAL POLISHING SYSTEM



INNOVATIVE
EFFICIENT
EASY TO USE
PERFECT RESULTS

BIGFOOT SYSTEM

Random orbital polishing



THE POLISHING REVOLUTION

The innovative **BigFoot random orbital polishing system** designed and developed by **RUPES** is a revolutionary method for reducing traditional polishing times without creating holograms on any part of the painted surface. The process is completely new and allows excellent results to be obtained in just one step, creating substantial savings in time, energy consumption and cost of consumable products.

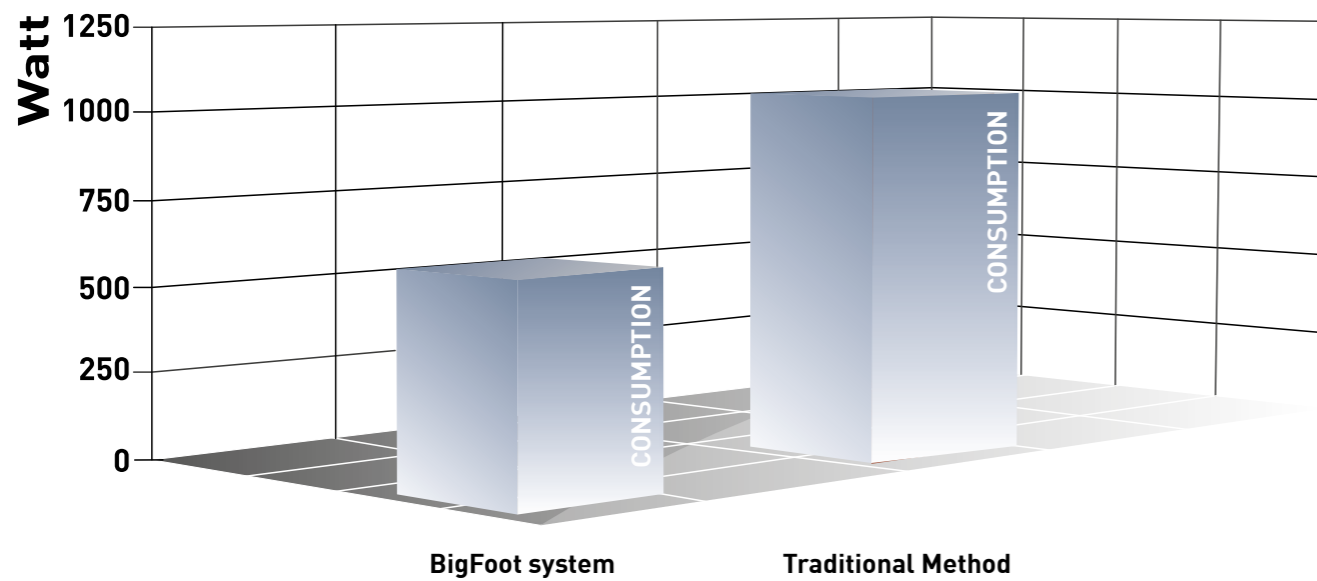
The BigFoot system is based on a large diameter random orbital movement. The long throw eliminates holograms and takes away the necessity for a secondary removal step of them, an operation that is generally necessary when traditional rotary polishing systems are used.

THE ENERGY EFFICIENCY OF THE BIGFOOT SYSTEM

ENERGY EFFICIENCY TEST

Comparative energy consumption between BigFoot and competitor in identical applications.

“Each element must contribute to the perfect end result.” This is the RUPES philosophy. Each and every detail of the BigFoot system has been designed to produce the best possible efficiency from all points of view. Energy savings are a particular concern of the BigFoot development team. Thanks to its innovative design, BigFoot uses an amazingly low 500 Watts of energy in the polishing process. Additionally, BigFoot uses far less consumable product than traditional polishers and accomplishes the same amount of work in a fraction of the time!



THE BIGFOOT ELECTRONIC MODULE GUARANTEES:

- Soft start and torque control.
- Maximum motor efficiency due to the ability of the electronic module to regulate motor output according to the torque requirements of the specific application.
- The motor will not restart automatically following a power outage, as restart protection is an inherent design feature of the tool.
- The operator and motor are protected from any danger caused by motor overload by the current limitation device.



230 VOLT

5.82 AMPERE

1050 WATT



230 VOLT

3.71 AMPERE

415 WATT

The BigFoot system is the perfect solution for the novice user or the professional in search of a flawless finish. BigFoot's design characteristics make it unique in the world of polishers. The exceptional balance and lack of vibration afford the operator complete control and maximize the maneuverability of the tool during the polishing operation.

Normally difficult areas such as edges, contours and corners are easily handled with the operator employing a consistent and harmonious motion.

Ensuring maximum comfort of the operator during use was an important aspect taken into account by RUPES technicians right from the first feasibility studies of the project.

The unique design and concentrated approach to ergonomics result in a very stable tool that is light and maneuverable while still delivering all the power necessary to accomplish a world class finish. With BigFoot, polishing becomes easy, comfortable and produces excellent results.



EASY
— TO —
USE

PERFECT RESULTS

Even with just one step!

Obtaining a perfectly polished surface in the least amount of time possible was a primary aim of the BigFoot project. Traditional polishing methods generally require an experienced technician and are very time consuming due to the various steps of sanding, polishing and treating post-polish holograms.

BigFoot simplifies the polishing process, substantially reducing time and producing an optimum result with just one step.

Thanks to the random orbital movement, BigFoot's innovative approach eliminates holograms and the need for post-polishing steps generally associated with traditional polishing methods.



BIGFOOT Mark II

Enhancing working quality and simplifying jobs is our main skill. We produce tools that change the way people work, helping professionals to work better, faster, and more effectively. We know that the satisfaction of a good end result is something priceless, and work hard to let you work easily. The BigFoot random orbital polishing system is tailored specifically to the professionals who demand the best finish possible. Based on a larger diameter random orbital movement, it guarantees faster paint correction than any other system available, setting the stage for 21st century detailing. From the RUPES ongoing research two new machines are born: two high-tech orbital polishers for the smoothest polishing experience ever. Discover the new **LHR21MarkII** & **LHR15 MarkII**, discover the next level of perfection.



+30%

EFFICIENCY

A more powerful engine, with less energy consumption and a higher performance.

MORE SPEED AND TORQUE

Higher RPM, more torque that guarantees maximum performance on hard- to- reach areas and concave surfaces.

OPTIMUM BALANCE

Electric weight and mechanical parts have Perfectly balanced.

LOWER VIBRATION LEVEL

With Less stress on the user, longer use of the tool, with comfort and ease to guide into any position.



IMPROVED ERGONOMICS

The rubber cup positioned on the body machine and grip refines the flawless BigFoot polishers design. The soft-grip material makes it pleasant and secure to hold. Practical handgrip, silent mechanics, minimum vibrations: these are just some features that makes BigFoot the market's most versatile and sought-after system

ELECTRONIC SPEED CONTROL MODULE

The variable speed dial provides the ability to adjust speed for specialty applications. The speed controller on the handle permits polishing at a speed precisely adjusted to suit the task in hand, and can also be regulated during the usage, thus avoiding any interruption. The pad rotates at the selected speed, maintaining specified speed under load, from 2500 to 5300 RPM, and employs exactly the right amount of power needed for the specific task. The speed control gives the user six settings for any polishing situation.



IMPROVED BALANCE

The perfect balance of the components makes polishing comfortable and vibrations free. This ensures an optimum transfer of power to the surface, and makes even hard-to reach spots accessible and guarantees top polishing results. That means that you can work for longer with greater comfort. The major balance of the tool body allows more sensitive control when polishing.

ON-OFF SWITCH LOCK

The on-off switch button located on the left side of the handgrip helps the operator to move his hands freely to different gripping positions while polishing, and prevent it to be pressed accidentally. Thanks to this device, the tool is safe also for extended use applications



DESIGN

Attention to detail is something more than just attractive design. Every detail, such as the rubber support positioned on the body of the machine to keep it stable during the non working stages, is the result of meticulous research aimed at achieving maximum operator comfort.

LHR 21 MarkII

With its 21 mm orbit and its ø180 mm backing pad, the **LHR 21 MarkII** random orbital polisher is the perfect polisher for working large surface areas. It gives a fast finish, without neglecting the RUPES branded quality. Improved efficiency guarantees more power and torque on every surface



TECHNICAL DATA

Ø backing pad	mm-in	150 - 6"
Ø orbit	mm-in	21-13/16"
Power	Watt	500
R.P.M.		2500 - 4700
Weight	kg-lbs	2,25 - 4,96
Speed regulation		●
Backing pad thread		M8

LHR 15 MarkII

Built to handle any detailing situation, the new **LHR 15 MarkII** is the new frontier of Detailing. The ergonomic design allows for precise paint correction with complete comfort, including curved surfaces and difficult to reach areas. More powerful with a higher rpm level, 30% more efficient, in spite of the smaller 15 mm orbit the machine is equipped with.



TECHNICAL DATA

Ø backing pad	mm-in	125 - 5"
Ø orbit	mm-in	15 - 19/32"
Power	Watt	500
R.P.M.		2500-5300
Weight	kg-lbs	2,20 - 4,85
Speed regulation		●
Backing pad thread		M8



IMPROVED ERGONOMICS

The rubber cup positioned on the machine body and grip refines the flawless BigFoot polishers design. The soft-grip material makes it pleasant and secure to hold. Practical handgrip, silent mechanics, minimum vibrations: these are just some features that makes BigFoot the market's most versatile and sought-after system

ELECTRONIC SPEED CONTROL MODULE

The Variable speed dial provides the ability to adjust speeds for specialist applications. The speed controller on the handle permits polishing at a speed precisely adjusted to suit the task in hand, and can also be regulated during use, thus avoiding any interruption. The pad rotates at the selected speed, maintaining specified speed under load, from 2500 to 5300 RPM, and employs exactly the right amount of power needed for the specific task. The speed control gives the user six settings for any polishing situation.



IMPROVED BALANCE

The perfect balance of the components makes polishing comfortable and vibration free. This ensures an optimum transfer of power to the surface, and makes even hard-to reach areas accessible and guarantees top polishing results. That means that you can work for longer with greater comfort. The major balance of the tool body allows more sensitive control when polishing.

ON-OFF SWITCH LOCK

The on-off switch button located on the left side of the handgrip allows the operator to move his hands freely to different gripping positions while polishing, and prevents it being pressed accidentally. Thanks to this device, the tool is safe also for extended use Applications



DESIGN

Attention to detail is something more than just attractive design. Every detail, such as the rubber support positioned on the body of the machine to keep it stable during the non working stages, is the result of meticulous research aimed at achieving maximum operator comfort.



ELEGANTLY DESIGNED

The RUPES R&D and Design departments have paid particular attention to the design and ergonomics of the BigFoot polishers. The perfectly balanced machine body, the practical handgrip, the silent operation and minimum vibration are just some of the characteristics that help make BigFoot the market's most versatile and sought-after system.

ANTISPINNING SHROUD

The dual function antispinning shroud is designed to **protect** the operator against the moving parts and act as a clutch for the backing pad, preventing further stress on the foam polishing pad when it is not in direct contact with the surface.



ELECTRONIC SPEED CONTROL MODULE

The speed controller on the handle is both practical and easy to use. The speed of the polisher can also be regulated during use, thus avoiding any interruption of the polishing operation.

ON-OFF SWITCH LOCK

Pressing the button on the LEFT-hand side of the handgrip while polishing locks the on-off switch. This allows the operator to move his/her hands freely to different gripping positions while the tool is operating.



DESIGN

The attention to detail is not limited to just the innovative and attractive design. The modern lines and exceptional technical quality are combined with a number of details that are the result of meticulous research aimed at achieving maximum operator comfort.

LHR 21ES

Characterised by its large \varnothing 21 mm orbit and \varnothing 150 mm RUPES backing pad, the electric LHR 21ES random orbital polisher is perfect for working large surface areas. The perfectly balanced polisher, combined with the \varnothing 150/180 mm foam polishing pads of the RUPES BigFoot range, guarantees rapid cutting and an impeccable finish.



TECHNICAL DATA

\varnothing backing pad	mm-in	150 - 6"
\varnothing orbit	mm-in	21 - 13/16"
Power	Watt	500
R.P.M.		2000-4200
Weight	kg-lbs	2,6 - 5,73
Speed regulation		●
Backing pad thread		M8

LHR 15ES

The Ø 15 mm orbit and the RUPES Ø 125 mm backing pad make the random orbital polisher particularly suitable for curved surfaces. The 15mm orbit of the LHR 15ES, shorter than that of its big brother the LHR 21ES, is coupled with a higher rpm level than that of the LHR 21ES. This higher speed gives the LHR 15ES equivalent cutting power to the LHR 21ES, in spite of the smaller orbit. Its Ø 130/150 mm BigFoot polishing foam pads, perfect balance and vibration-free operation make the LHR 15ES a real gem and a must for the tool kit of every detailer.



TECHNICAL DATA

Ø backing pad	mm-in	125 - 5"
Ø orbit	mm-in	15 - 19/32"
Power	Watt	500
R.P.M.		2000-5000
Weight	kg-lbs	2,6 - 5,73
Speed regulation		●
Backing pad thread		M8



ELEGANTLY DESIGNED

The RUPES R&D and Design departments have paid particular attention to the design and ergonomics of the BigFoot polishers. The perfectly balanced machine body, the practical handgrip, the silent operation and minimum vibration are just some of the characteristics that help make BigFoot the market's most versatile and sought-after system.

ANTISPINNING SHROUD

The dual function antispinning shroud is designed to protect the operator against the moving parts and act as a clutch for the backing pad, preventing further stress on the foam polishing pad when it is not in direct contact with the surface.



ELECTRONIC SPEED CONTROL MODULE

The speed controller on the handle is both practical and easy to use. **The speed of the polisher can also be regulated during use, thus avoiding any interruption of the polishing operation.**

ON-OFF SWITCH LOCK

Pressing the button on the LEFT-hand side of the handgrip while polishing **locks the on-off switch**. This allows the operator to move his/her hands freely to different gripping positions while the tool is operating.



DESIGN

The attention to detail is not limited to just the innovative and attractive design. The modern lines and exceptional technical quality are combined with a number of details that are the result of meticulous research aimed at achieving maximum operator comfort.

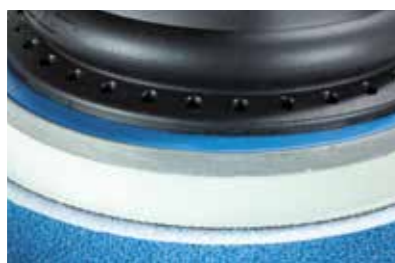


ELEGANTLY DESIGNED

With its nonslip rubber inserts in the front cover, the LHR 12E is perfect for all polishing operations in difficult to reach zones. The operator can work in comfort to produce the best results possible.

DUAL FUNCTION: SANDING AND POLISHING

The LHR 12E and its 12 mm orbit can be used with fine grit abrasives to speed up deep correction operations. The tool can then use foams and compounds to refine the abrasive scratches and restore a lustrous finish.



ANTISPINNING SHROUD

The dual function antispinning shroud is designed to protect the operator against the moving parts and act as a clutch for the backing pad, preventing further stress on the foam polishing pad when it is not in direct contact with the surface.

ELECTRONIC SPEED CONTROL MODULE

The speed controller is both practical and easy to use. The speed of the polisher can also be easily adjusted without interrupting the work.



DESIGN

The attention to detail is not limited to just the innovative and attractive design. The modern lines and exceptional technical quality are combined with a number of details that are the result of meticulous research aimed at achieving maximum operator comfort. The non-slip rubber inserts are numerous and have many functions. In particular, the insert on the machine body is used to support the polisher when placed on a surface.

LHR 12E DUETTO

This simple, intuitive and exceptionally comfortable tool allows any operator to tackle even the most challenging polishing operation. The LHR 12E is perfect for deep correction operations and anti-hologram passes. The 12 mm orbit allows the operator exceptional control in difficult applications such as edge and profile work, making "perfect detailing" an easy operation for novices and professionals alike.



TECHNICAL DATA

Ø backing pad	mm-in	125 - 5"
Ø orbit	mm-in	12 - 1/2"
Power	Watt	400
R.P.M.		4000-5500
Weight	kg-lbs	2,6 - 5,73
Speed regulation		●
Backing pad thread		M8

LHR 75E MINI

Details: the LHR 75E is the polisher for difficult shapes and for spot repair operations. The LHR 75E is a must for any detailer wishing to obtain perfect results, even in the most difficult areas. The 12 mm orbit, combined with RUPES accessories and consumables, achieves quick results on areas such as mudguards, front panels, etc.



TECHNICAL DATA

Ø backing pad	mm-in	75 - 3"
Ø orbit	mm-in	12 - 1/2"
Power	Watt	400
R.P.M.		4000-5500
Weight	kg-lbs	2,3 - 5,07
Speed regulation		●
Backing pad thread		M6



ELEGANTLY DESIGNED

With its nonslip rubber inserts on the front cover, the LHR 75E is perfect for all polishing operations in difficult to reach areas. The operator can work in perfect comfort to produce the best possible results.

ON-OFF SWITCH LOCK

Lined in non-slip rubber, the on/off lever of the BigFoot polisher ensures a controlled soft start, giving the operator full control over the tool.



MAXIMUM FLEXIBILITY

Thanks to the backing pad with small diameter, the LHR 75E is perfect in polishing applications on small and intricate areas. The small machine dimensions and the 12 mm orbit allow a comfortable handling and accuracy in detail polishing.

ELECTRONIC SPEED CONTROL MODULE

The speed controller is both practical and easy to use. The speed of the polisher can also be easily adjusted without interrupting the work.



DESIGN

The attention to detail is not limited to just the innovative and attractive design. The modern lines and exceptional technical quality are combined with a number of details that are the result of meticulous research aimed at achieving maximum operator comfort. The non-slip rubber inserts are numerous and have many functions. In particular, the insert on the machine body is used to support the polisher when placed on a surface.



ELEGANTLY DESIGNED

The ergonomic hand grip also allows full control of the polisher using just one hand. The hand grip is lined with a composite material, extremely resistant to impact and mechanical stresses, designed to isolate the hand from the air ducts and guarantee greater comfort. The rubber cover guarantees maximum grip and precision in the movement of the tool when both hands are used.

SPEED CONTROL

The speed controller on the handle is both practical and easy to use. The speed of the polisher can also be regulated during use, thus avoiding any interruption of the polishing operation.



EXTREMELY LIGHTWEIGHT

The pneumatic tool weighs a mere 0.65 kg. Thanks to its light weight, polishing and Spot Repairs become fast and easy.

ADJUSTABLE AIR OUTLET

In addition to being an air outlet, the device also acts as a silencer. Mounted on the base near the air connection, the small silencer is an extremely effective way of deadening the noise generated by the flow of compressed air.



DESIGN

The attention to detail is not limited to just the innovative and attractive design. The modern lines and exceptional technical quality are combined with a number of details that are the result of meticulous research aimed at achieving maximum operator comfort. The perfectly balanced machine body, the practical handgrip, the silent operation and minimum vibration are just some of the characteristics that help make BigFoot the most versatile and sought-after polishing system.

LHR 75

The small pneumatic random orbital polisher has a \varnothing 15 mm orbit and a \varnothing 75 mm backing pad, allowing the tool to work in awkward and difficult to reach areas. The reduced size and high cutting capacity, combined with the RUPES BigFoot \varnothing 80/100 mm polishing foam pads, make the LHR 75 the ideal polisher for spot repairs, polishing contoured areas and parts such as mirrors and pillars.



TECHNICAL DATA

\varnothing backing pad	mm-in	75 - 3"
\varnothing orbit	mm-in	15 - 19/32"
Working pressure	bar-PSIG	6,2 - 90
Air consumption max	l/min	320
R.P.M.		0 - 11000
Weight	kg-lbs	0,65 - 1,43
Speed regulation		•
Backing pad thread		M6



TOOL BACKING PAD POLISHING PAD

THE THREE CRITICAL SYSTEM COMPONENTS ARE DESIGNED TO WORK IN COMBINATION TO GUARANTEE LOW VIBRATION LEVELS AND THE BEST POSSIBLE POLISHING RESULT.

The BigFoot random orbital polishing system is designed for maximum efficiency, ease of use and operator comfort. Using BigFoot with RUPES original backing pads and RUPES original polishing pads results in a technical system that guarantees the best possible polishing result and ensures that the tool has perfect balance and a substantially reduced vibration level. The use of backing pads or compound carriers other than members of the BigFoot family of products can lead to a reduction in performance and can further affect the technical and mechanical characteristics of the tool, changing its balance and increasing vibration. Increased vibration not only affects the comfort and overall safety of the operator, but also results in significantly diminished tool life.



GREY BACKING PAD

FOR FOAM POLISHING PADS

The RUPES backing pad is essential for the stability of the BigFoot System. Manufactured from expanded polyurethane, it is particularly resistant to mechanical stresses and together with the BigFoot foam polishing pad reduces vibration to a minimum. The special perforations in the pad are designed to create an air flow that helps to dissipate any heat generated by the polishing action. The material used for the manufacture of the velcro provides an effective anchor for the foam polishing pad.



BLACK BACKING PAD

FOR MICROFIBER POLISHING PADS

The BigFoot system offers the lowest vibration levels in the industry due to the precise balance relationship between the motor's counterbalance system and the accessory items used during the polishing process. As the microfiber polishing pads are heavier than the normal foam polishing pads, RUPES has designed a special backing plate for use with the microfiber pads on the **LHR 15 MarkII**. The new backing plate is lighter and has a repositioned center of gravity to assure perfect balance of BigFoot with the new microfiber pads. The ventilation characteristics of the new backing pad combined with the slots in the microfiber polishing pads effectively dissipate heat and maintain the work surface temperature at an acceptable level.

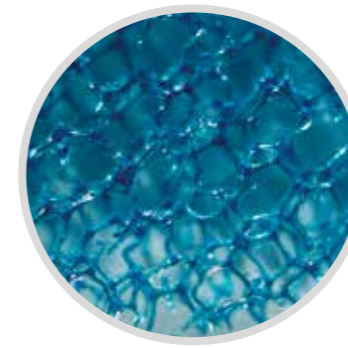


LHR 15 MarkII



BIGFOOT FOAM POLISHING PADS

RUPES' expanded resin foam polishing pads are specially designed for the random orbital polishing system. They produce excellent results with substantial time saving and reduced compound consumption. BigFoot's random orbital movement creates high mechanical stresses on the foam polishing pads, generating an increase in internal temperature. The innovative "open cell" structure of the BigFoot foam polishing pads prevents the build-up of heat generated during the polishing process. In addition, this particular structure guarantees maximum efficiency in the polishing process with minimum downward vertical pressure from the operator. The center hole creates superior ventilation and heat dispersion through special channels in the backing pad. The innovative design of the truncated cone shape optimizes the performance of the large diameter orbit, and at the same time protects against accidental contact between the backing pad and the work surface.



COARSE

The large dimension of the cells dissipates any heat build-up, allowing the compounds to work at optimum levels. The oscillating movement of the BigFoot systems is a perfect partner for the porous structure. The abrasive compound is not retained inside the sponge but is continuously applied to the work surface, providing a constant layer of lubricated abrasive between the surface and the foam polishing pad. The use of Zephir abrasive compound is recommended.

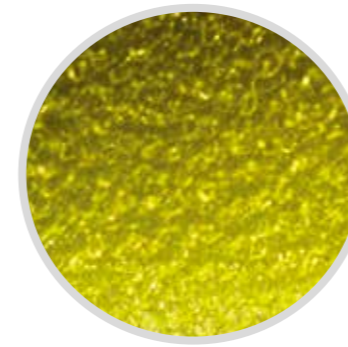


MEDIUM

The oscillating movement of the BigFoot systems is a perfect partner for the porous structure. The abrasive compound is not retained inside the sponge but is continuously applied to the work surface, providing a constant layer of lubricated abrasive between the surface and the foam polishing pad.

Following are recommended compound/medium foam pad combinations:

- Quarz abrasive compound for optimum results on any type of surface;
- Zephir abrasive compound to decrease correction time and still produce a good finish;
- Keramik abrasive compound for one-step applications.



FINE

This most versatile of BigFoot pads adapts to the type of compound used. Its fine cell structure has a medium/hard consistency. Produced from superior grade resins, the fine pad heightens the "gloss level" of the compounds while offering excellent speed of correction.

Following are recommended compound/medium foam pad combinations:

- Quarz abrasive compound for an excellent finish in one-step applications;
- Keramik abrasive compound for excellent results on difficult surfaces/this combination will easily remove light swirls and holograms;
- Diamond abrasive compound to obtain extremely high levels of gloss on hard surfaces.



EXTRAFINE

Manufactured from a high-density resin that results in a particularly soft consistency with a very fine cell structure, this foam pad adapts itself beautifully to convex surfaces and irregular shapes typically found on sports cars and vintage vehicles. Its unique soft density makes it ideal for attaining an ultragloss surface finish. The use of Diamond abrasive compound is recommended for a "show car" finish.

BIGFOOT MICROFIBER POLISHING PADS

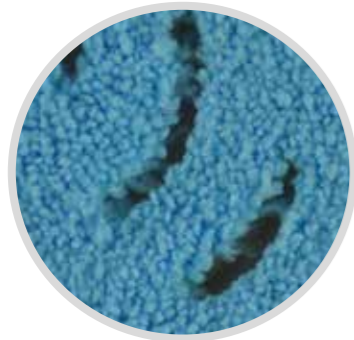
The innovative RUPES PATENTED microfiber polishing pads are manufactured using a polyurethane resin directly injected into the structure between the velcro interface and the microfiber fabric. The resin adheres directly to both materials to provide a stable and secure bond without the use of adhesives. Due to the unique moulding technique, RUPES is able to offer a pad with an beveled, allowing easy conformability to convex shapes during the polishing process. In addition to helping dissipate heat, the centre hole also helps to correctly fit the microfiber polishing pad onto the backing plate.

CUTTING AND FINISHING

The microfiber fabric is manufactured in two versions, blue for the correction step to enhance the cutting capacity of the abrasive, and yellow for light action to promote the gloss level.

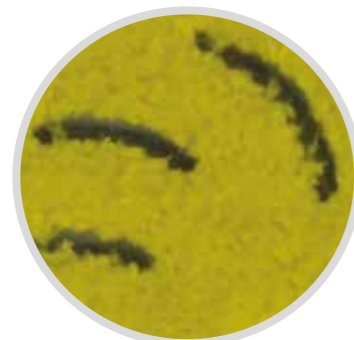
MAIN ADVANTAGES

- Quick defect correction on high solids or ceramic clears coat.
- High efficiency on clear coat and one stage surfaces.
- Greatly reduced polishing cycle times.
- Less dust on the surface during polishing process.
- Comfortable and easy to use.



BLUE CUTTING PAD

The Blue Microfiber Cutting Pads are designed for removing heavy swirl marks, scratches and oxidation from any color paintwork. The cutting version features a short and dense microfiber and is perfect for use with heavy cutting BigFoot polishing compound. The special microfiber allows for the true correction power of the product used and for maximum product coverage to achieve the highest quality results on ceramic laquer.



YELLOW FINISHING PAD

The Yellow Microfiber Finishing Pads are designed to restore the depth and clarity to your vehicle's paintwork. The long and soft microfiber is perfect for removing light swirl marks, holograms using fine and ultra fine BigFoot polishing compounds. The Yellow Microfiber Finishing Pads eliminate light imperfections delivering a perfect optical grade finish.



SPIRAL SLOTS, A REAL INNOVATION

The innovative spiral slots represent an important technical improvement with an unique design. Developed for use with BigFoot random orbital polishers, the new spiral slots guarantee:

- Heat dissipation
- Lighter weight for a better balance of the machine
- Controlled and measured spreading of the polishing compounds on the surface



BIGFOOT ABRASIVE COMPOUNDS

BigFoot abrasive compounds are the result of in-depth studies and research and consist of high quality abrasive mixes, all silicone free. The compounds are specifically designed for random orbital polishing. Random orbital polishing compounds require a unique formula to assure that the product has the perfect combination of viscosity and aggressiveness. These unique compositions result in a product whose consistency delivers the best possible solution for uniform distribution on the foam polishing pad. Four different types of compounds are available, each satisfying a particular polishing need.



COARSE

ZEPHIR GLOSS is a high-performance compound recommended for first step polishing. Its grain is the most "aggressive" of the BigFoot abrasives and is used for the rapid removal of marks and scratches. At the same time Zephir is highly effective in restoring paints and creating a high degree of gloss.



MEDIUM

QUARZ GLOSS is a medium grain abrasive compound that easily repairs minor surface scratches and minor scoring from sources such as car wash brushes. Quarz can be used with full confidence that it will not leave halos or holograms.



FINE

KERAMIK GLOSS is the ideal composition for perfect finishes on particularly hard clear coats. This fine water-soluble abrasive compound is ideal for totally eliminating paint defects and for a hologram-free final step of spot repair, following the microabrasive nib removal process.



EXTRAFINE

DIAMOND is specifically formulated for the final finishing pass and its ultra-fine abrasive generates a deep lustre and color depth. The product is water soluble, allowing for easy removal of any residue. The extreme lustre and gloss that all professionals have sought for years are finally easily within reach!



UHS POLISHING SYSTEM

Designed for scratch resistant and high solid ceramic paints, the RUPES UHS Polishing System REMOVES IMPERFECTION AND LEAVES A HIGH-GLOSS FINISH IN JUST 1-STEP. The UHS foam pads also perform well with the RUPES Zephir (Blue), Quarz (Green) and Keramik (Yellow) compounds in heavy correction and gloss enhancement applications with most types of clear coat paints.



UHS EASY GLOSS
Ultra High Solid Surface Polishing Compound

UHS FOAM POLISHING PAD
High Solids Clear Coat Polishing Pad

The logo for RUPES, featuring the word "RUPES" in a bold, italicized, white sans-serif font with a registered trademark symbol (®) to the upper right. The text is centered within a solid red rectangular background.

RUPES S.p.A

Via Marconi 3A
20080 Vermezzo (MI) - Italy

T +39 - 02.94.69.41

F +39 - 02.94.94.10.40

E rupes@rupes.it

W www.rupes.com

RUPES USA, Inc.

14320 Longs Peak Court Longmont,
CO 80504-9698 USA

T +1-970-535-0100

F +1-303-723-8680

E orders@rupesusa.com

W www.rupesusa.com