

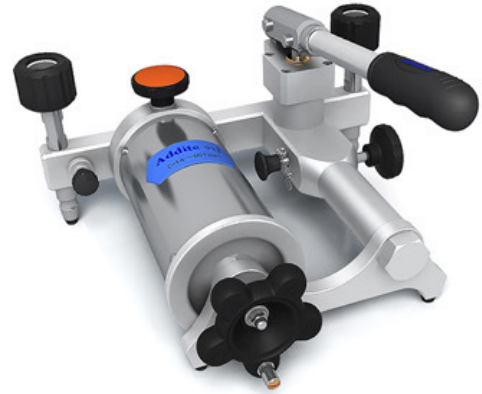
ADT 912 Low Pressure Test Pump

Additel

OVERVIEW

The ADT 912 Pneumatic Pressure Test Pump is a hand operated pressure pump designed to generate pressure either 95% vacuum or 60 psi (4 bar). A high-quality screw press is designed for fine pressure adjustment, with adjusting resolution up to 0.01 Pa (0.0001 mbar). To reach the pressure stability as high as possible during the micro-pressure calibration, an isothermal bellows chamber is designed to reduce the possible heat effects from environmental temperature change, and a specially designed shut-off valve makes the pressure stability as high as possible during calibration. A built-in gas-liquid isolator protects the pump from moisture and dirt to minimize the maintenance. Two finger-tight connectors installed on the pump allow the user using fingers to connect and disconnect the reference gauge and devices under test quickly and easily without the need for PTFE tape or wrenches. The ADT 912 is an ideal comparison test pump for low pressure application.

Generate 95% vacuum to 60 psi (4 bar) pressure



- Portable
- Great stability and high Resolution
- Minimal maintenance
- Finger-tight connectors

FEATURES

- **Portable**
- **High resolution**
 - ✓ 0.01Pa (0.0001 mbar)
 - ✓ High-quality screw press for fine pressure adjustment
- **Great Stability**
 - ✓ Isothermal chamber: the pressure chamber is insulated to reduce the influence from environmental temperature changes
 - ✓ Specially designed bellows minimize leakage to guarantee excellent stability
 - ✓ Shut-off valve closes the air in the isothermal chamber during calibration
- **Durable and Minimal Maintenance**

Built-in gas-liquid isolator protects the pump from moisture and dirt
- **Easy-to-use**
- **Finger-tight Connectors**

Using your fingers to connect and disconnect gauges quickly and easily without the need for PTFE tape or wrenches

SPECIFICATIONS

- **Media:** Air.
- **Generated Pressure Range:**

14 psi (0.95 bar) vacuum to 60 psi (4bar) positive pressure
- **Pressure Resolution:**

0.01 Pa (0.0001 mbar).
- **Material:**

Ram/adapters: SST;
Body: SST/aluminum;
Seals: Buna-N.
- **Weight:** 6.2 lb (2.8kg).
- **Connection:**

Finger-tight connectors for both test gauge and reference gauge.
Test Gauge connection: 1/4" NPT female.
Reference Gauge Connection: 1/4" NPT female.
- **Dimensions:**

Height: 5.51" (140 mm);
Base: 10.75" (273 mm) x 10.16" (258 mm).

ORDERING INFORMATION

- **Model number:**



Pressure port type:
N – 1/4" NPT female
X – Customize

- **Optional Accessories:**

Model numbe	Description
ADT 912-kit	Test kit for ADT 912 (hose barb fitting, hose, etc)
ADT 101	Connection fitting, 1/4" NPT male to various female connections (18 pc).
ADT 102	Quick connection fitting, 1/4" NPT male to various female connections (24 pc).
9903	Carrying case for ADT912 pump and one gauge

Additel

22865 Savi Ranch Parkway Ste F
Yorba Linda, CA 92887, USA

Additel Corporation
Tel: (714)998-6899 Fax:(714)998-6999
E-mail: sales@additel.com
www.additel.com