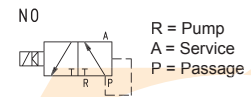
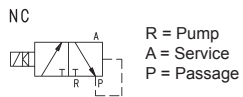
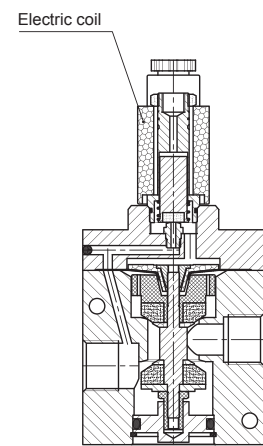
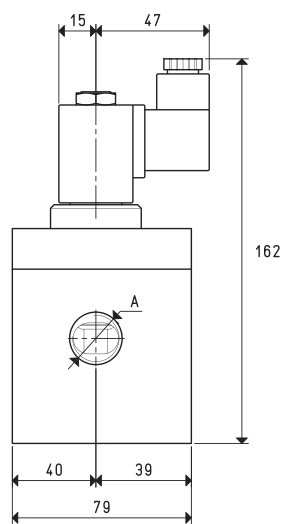
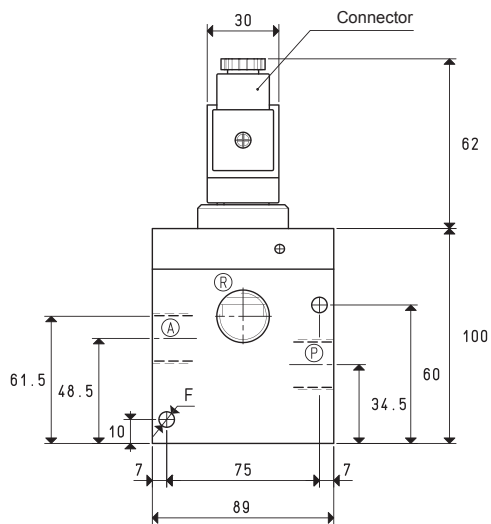


DIRECT DRIVE 3-WAY VACUUM SOLENOID VALVES



Art.	A	Max. capacity cum/h	Vacuum level mbar abs.		Reaction time msec		Ø orifice	Passage section mm ²	F Ø	Weight Kg
			min	max	exc.	deexc.				
07 05 40 NC	G1"	90	850	0.5	38	18	25	490	6.5	1.91
07 05 40 NO					25	20				

Note: The coil and the connectors are not integral part of the solenoid valves, therefore, they must be ordered separately (See solenoid valve accessories).

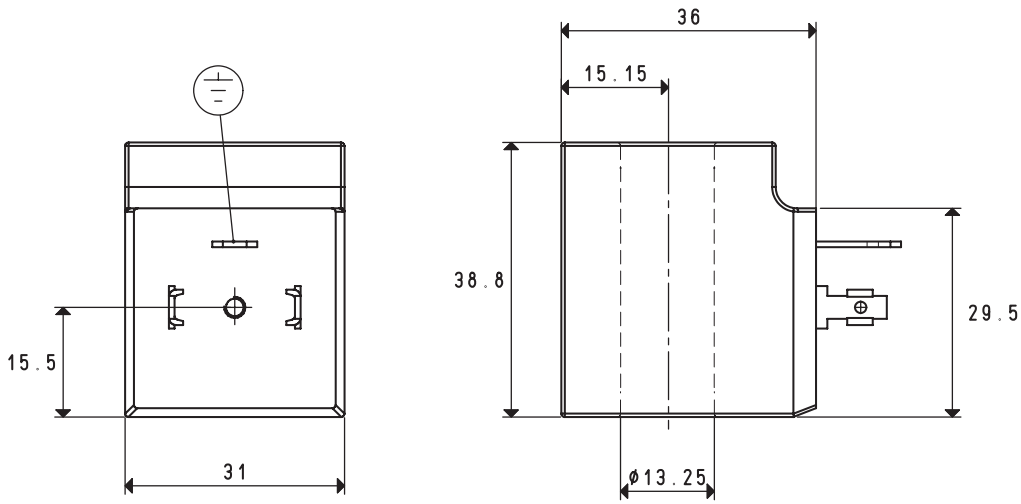
3D drawings available at www.vuototecnica.net

Conversion ratio: inch = $\frac{mm}{25.4}$; pounds = $\frac{g}{453.6}$ = $\frac{Kg}{0.4536}$

GAS-NPT thread adapters available at page 1.117



SOLENOID VALVE ACCESSORIES AND SPARE PARTS

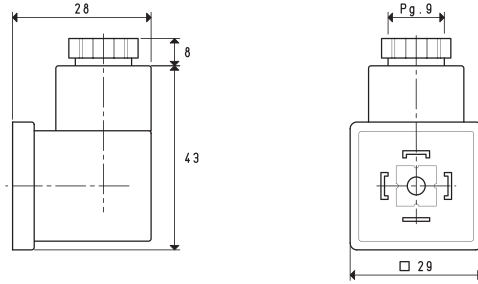


AC AND DC COILS

Art.	Duty cycle	Absorption	Nominal voltage	Weight g
00 07 03 N	100%	16 W	V12 CC	100
00 07 04 N	100%	16 W	V24 CC	100
00 07 05 N	100%	16 W	V48 CC	100
00 07 06 N	100%	16 W	V110 CC	100
Solenoid valves art.				
07 01 11 - 07 02 11 - 07 03 11 - 07 04 11 - 07 05 11 - 07 06 11				
07 01 16 - 07 02 16 - 07 03 16				
07 01 20 - 07 02 20 - 07 03 20				
07 03 40 - 07 04 40 - 07 05 40 - 07 06 40				
07 03 51 - 07 04 51 - 07 05 51 - 07 06 51				
DDN 14				
00 07 256 N	100%	16.5 V.A.	V24/50 - 60 Hz	100
00 07 257 N	100%	16.5 V.A.	V48/50 - 60 Hz	100
00 07 258 N	100%	16.5 V.A.	V110/50 - 60 Hz	100
00 07 259 N	100%	16.5 V.A.	V220/50 - 60 Hz	100
Solenoid valves art.				
07 01 11 - 07 02 11 - 07 03 11 - 07 04 11 - 07 05 11 - 07 06 11				
07 01 16 - 07 02 16 - 07 03 16				
07 01 20 - 07 02 20 - 07 03 20				
07 03 40 - 07 04 40 - 07 05 40 - 07 06 40				
07 03 51 - 07 04 51 - 07 05 51 - 07 06 51				
DDN 14 - DDN 25				

3D drawings available at www.vuototecnica.net

SOLENOID VALVE ACCESSORIES AND SPARE PARTS

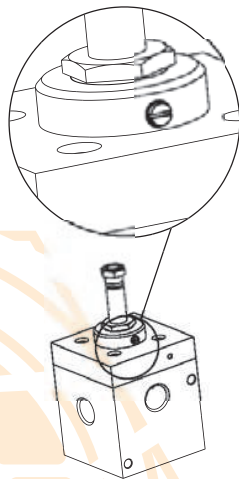


COIL CONNECTORS

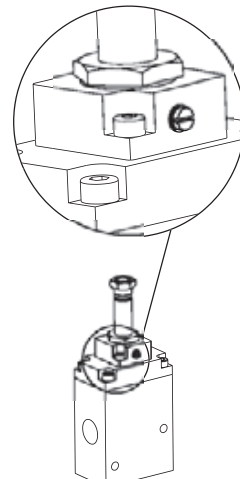
Art.	Contact nominal capacity		Conductor max. section mm ²	Operating temperature °C	Ø cable mm	Weight g	Notes
	A						
00 07 63	10	max 16	1.5	-40 ÷ +90	6 ÷ 8	24	Standard
00 07 101	10	max 16	1.5	-40 ÷ +90	6 ÷ 8	24	with LED
00 07 186	10	max 16	1.5	-40 ÷ +90	6 ÷ 8	24	with LED and filtre
Coil art.							
00 07 03 - 00 07 04 - 00 07 05 - 00 07 06 - 00 07 215 - 00 07 216 - 00 07 217 - 00 07 218 - 00 07 219							
00 07 256 - 00 07 257 - 00 07 258 - 00 07 259							

SM DEVICE FOR MANUALLY OPENING AND CLOSING THE SOLENOID VALVES

This small cam, which can be activated by a screwdriver, acts on the mobile core of the actuators causing their commutation. This device is installed, upon request, on compressed-air pilot-operated 3-way solenoid valves art. 07 .. 11 or vacuum solenoid valves art. 07 .. 40, to allow their opening and closing in absence of electricity. To order it, all you have to do is add the letters SM to the article of the solenoid valve.



SM device installation on solenoid valve art. 07 .. 40



SM device installation on solenoid valve art. 07 .. 11

3D drawings available at www.vuototecnica.net

4.34

Conversion ratio: inch = $\frac{\text{mm}}{25.4}$; pounds = $\frac{\text{g}}{453.6}$ = $\frac{\text{Kg}}{0.4536}$



VACUUM VALVE AND SOLENOID VALVE SEALING KIT

Sealing kits are composed of a membrane, shutters and standard O-rings installed on our compressed air and vacuum 3-way valves and solenoid valves.

In presence of very hot fluids (up to 250 °C) or corrosive fluids, we can supply sealing kits in special compounds. Please contact our technical department.

Complete kit for valves:



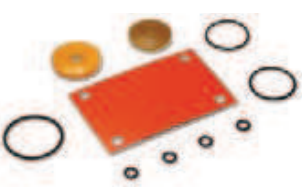
07 01 31 e 07 02 31	art. 00 07 267
07 03 31	art. 00 07 268
07 03 31 LP	art. 00 07 287
07 04 31 e 07 05 31	art. 00 07 269
07 04 31 LP e 07 05 31 LP	art. 00 07 288
07 06 31	art. 00 07 270
07 06 31 LP	art. 00 07 289

Complete kit for solenoid valves:



07 01 11 e 07 02 11	art. 00 07 271
07 03 11	art. 00 07 272
07 03 11 LP	art. 00 07 290
07 04 11 e 07 05 11	art. 00 07 273
07 04 11 LP e 07 05 11 LP	art. 00 07 291
07 06 11	art. 00 07 274
07 06 11 LP	art. 00 07 292

Complete kit for solenoid valves:

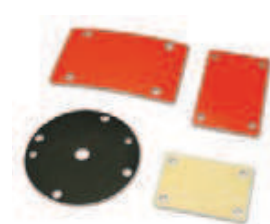


07 01 51 e 07 02 51	art. 00 07 275
07 03 51	art. 00 07 276
07 03 51 LP	art. 00 07 293
07 04 51 e 07 05 51	art. 00 07 277
07 04 51 LP e 07 05 51 LP	art. 00 07 294
07 06 51	art. 00 07 278
07 06 51 LP	art. 00 07 295

Complete kit for solenoid valves:



07 03 40 e 07 04 40	art. 00 07 279
07 05 40	art. 00 07 280
07 06 40	art. 00 07 281



VACUUM VALVE AND SOLENOID VALVE PILOTING MEMBRANE

Art.	Valves art.	Connections	Material	Colour	Dimensions mm
00 07 104	07 03 40 - 07 04 40	G1/2" - G3/4"	reinforced NBR	Black	Ø 65
00 07 105	07 05 40	G1"	reinforced NBR	Black	Ø 76
00 07 177	07 06 40	G1" 1/2	reinforced NBR	Black	Ø 110
00 07 229	07 01 11 - 07 01 31 - 07 01 51 07 02 11 - 07 02 31 - 07 02 51	G1/4" - G3/8"	Vulkollan®	Beige	49 x 35
00 07 230	07 03 11 - 07 03 31 - 07 03 51	G1/2"	Urepan® 65	Grey - orange	62 x 39
00 07 296	07 03 11 LP - 07 03 31 LP - 07 03 51 LP	G1/2"	Vulkollan®	Beige	62 x 39
00 07 231	07 04 11 - 07 04 31 - 07 04 51 07 05 11 - 07 05 31 - 07 05 51	G3/4" - G1"	Urepan® 65	Grey - orange	79 x 49
00 07 297	07 04 11 LP - 07 04 31 LP - 07 04 51 LP 07 05 11 LP - 07 05 31 LP - 07 05 51 LP	G3/4" - G1"	Vulkollan®	Beige	79 x 49
00 07 232	07 06 11 - 07 06 31 - 07 06 51	G1"1/2	Urepan® 65	Grey - orange	129 x 89
00 07 298	07 06 11 LP - 07 06 31 LP - 07 06 51 LP	G1"1/2	Vulkollan®	Beige	129 x 89

3D drawings available at www.vuototecnica.net