

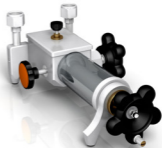
ADT 925 Handheld Hydraulic Pressure Test Pump



OVERVIEW

The ADT 925 Hydraulic Pressure Test Pump is a hand operated pressure pump designed to generate pressure from -12.5psi (-0.85bar) to 6000psi (400bar). With the patented screw press technology, the high pressure can be easily generated, increased and decreased smoothly. Without non-returning valve that is usually used on troublesome hand pumps, the ADT 925 requires minimal maintenance. Two hand-tight connectors installed on the pump allow easy connecting and disconnecting to the test pump without the need for PTFE tape or wrenches. The ADT 925 is an ideal comparison test pump for calibrating pressure measuring instruments such as test gauges, indicators or transducers in the field or laboratory.

Generate 85% vacuum to 6000 psi (400 bar) pressure



- Portable, only 3.8 lb
- Minimal maintenance
- Increase and decrease pressure smoothly
- Hand-tight connectors

FEATURES

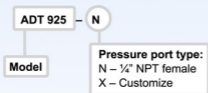
- **Portable:** Only 3.8 lb
- **Durable and Minimal Maintenance**
Patented screw press technology, without non-returning valve inside that is usually used on troublesome hand pumps.
- **Easy-to-use**
The high pressure can be generated easily, increased and decreased smoothly.
- **Extremely Low Leakage**
Patented screw press technology, instead of leaking, troublesome, non-returning hand pumps.
- **Hand-tight Connectors**
Allows easy connecting and disconnecting to the test pump without the need for PTFE tape or wrenches.

SPECIFICATIONS

- **Media:** Oil or deionized water.
- **Generated Pressure Range**
12.5 psi (0.85 bar) vacuum to 6000 psi (400 bar) positive pressure.
- **Material**
Ram/adapters: SST
Body: SST/aluminum
Seals: Buna-N
- **Connection**
Hand-tight connectors for both test gauge and reference gauge.
Test Gauge Connection: 1/4" NPT female.
Reference Gauge Connection: 1/4" NPT female.
- **Dimensions**
Height: 4.72" (120 mm)
Base: 9.84" (250 mm) x 5.51" (140 mm)
- **Weight:** 3.8 lb (1.7 kg).

ORDERING INFORMATION

- **Model Number**



- **Optional Accessories**

Model number	Description
9201	Oil, Diethylhexyl Sebacate, 1 liter (1 quart)
ADT 103	Adapter and fittings, 1/4" NPT male to various male and female connections.
9901-925	Carrying Case for one ADT925 pump and two ADT681 gauges or ADT672 calibrators
ADT100-HTK-2	Hose Test Kit, 5 feet flexible hose, 8000 psi, 1/4NPT male to 1/2NPT female hand-tight quick connector.
ADT100-HTK-4	Hose Test Kit, 5 feet flexible hose, 8000 psi, 1/4NPT male to 1/4NPT female hand-tight quick connector.
ADT100-HTK-8	Hose Test Kit, 5 feet flexible hose, 8000 psi, 1/4NPT male to 1/8NPT female hand-tight quick connector.
ADT100-HTK-B	Hose Test Kit, 5 feet flexible hose, 8000 psi, 1/4NPT male to 1/4BSP female hand-tight quick connector.