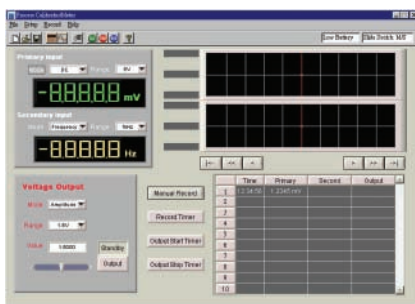
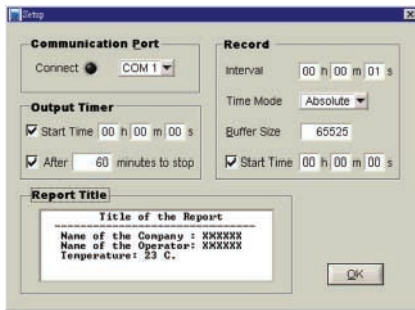


Process Tools

ESCORT-2030/898

Process Calibrator/MultiMeters



ESCORT-2030

NEW



ESCORT-898

NEW

Specifications	ESCORT-2030	ESCORT-898
Output function		
Signal(output)/measure(input)	Simultaneous	separate
Constant voltage output		
Range	$\pm 1.5V, \pm 15V$	loop power 24V
Accuracy	$\pm (0.03\% + 3d)$	$\pm (0.03\% + 5d)$
Resolution	0.1mV, 1mV	
Constant current output		
Range	$\pm 25mA$	0~25mA
Max. load	12V (500 Ω)	24V (1200 Ω)
Accuracy	$\pm (0.03\% + 5d)$	$\pm (0.03\% + 5d)$
Resolution	1 μA	1 μA
Frequency source		
Waveform type	Square	
Range	0.5~4800 Hz	
Amplitude	5, 12, $\pm 5, \pm 12 V$	
Pulse width variation	1/freq.*256	
Duty cycle variation	0.390625%/step	
Memory Generation		
Scan	16 step	Adjustable steps
Ramp	999 step	999 step
Input function (multi-meter)		
Display counts	50,000	50,000
True RMS	AC+DC	AC
DCV Range	50mV~250V	50mV~1000V
ACV Range	50mV~250V	50mV~1000V
DCA Range	50mA/500mA	50mA/1000mA
ACA Range	50mA/500mA	50mA/1000mA
Resistance	500 Ω ~50M Ω	500 Ω ~50M Ω
% Scale for mA readout	0-20/4-20 mA	0-20/4-20 mA
Diode/ audio continuity		
Frequency	1Hz~200kHz	1Hz~200kHz
Pulse width	0.2~1999.9ms	0.2~1999.9ms
Duty cycle	0.1%~99.9%	0.01%~99.99%
Temperature(K type)	0°C compensation	0°C compensation
1 ms peak hold		
Dynamic Recording	Auto/Manual	Auto/Manual
Data Hold	Data/Refresh hold(Trigger)	Data/Refresh hold(Trigger)
Backlit display	EL	EL
Auto power off	off/1~99min.	off/1~99min.
Communication	Infrared (SCPI)	Infrared (SCPI)
Battery	1.2Vx8 Ni-MH rechargeable battery	9V Ni-MH rechargeable batteries
Safety	CAT. II 250V	CAT. IV 600V/III 1000V

All specifications are subject to be changed by ESCORT without notice.